

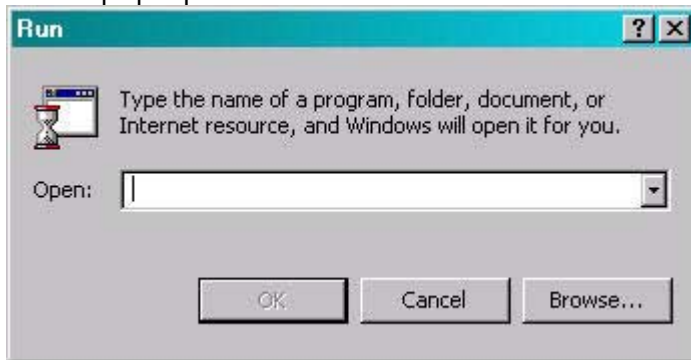
Verifying IP Connectivity to the LEADS 2000 Program

After the receiver program has been successfully installed and all configuration tasks have been completed, connectivity to ISP name servers must be verified.

NOTE: LEADS 2000 PC's needs to be properly cabled to a LAN that is connected to the state frame relay router prior to this procedure.

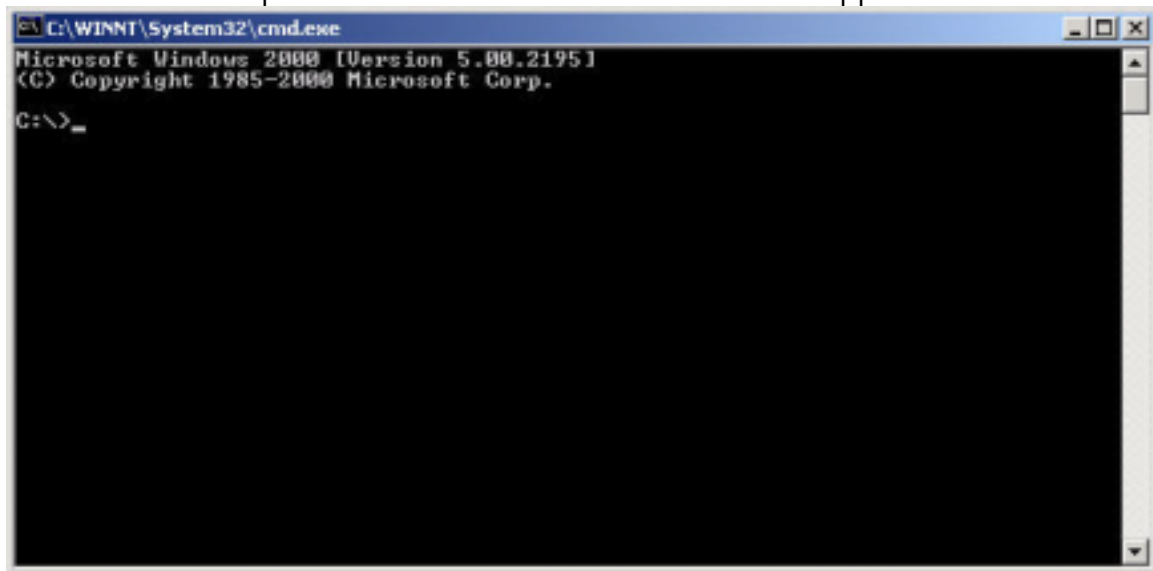
1. Click on **Start>Run**.

A Run pop-up window similar to the one below will appear:



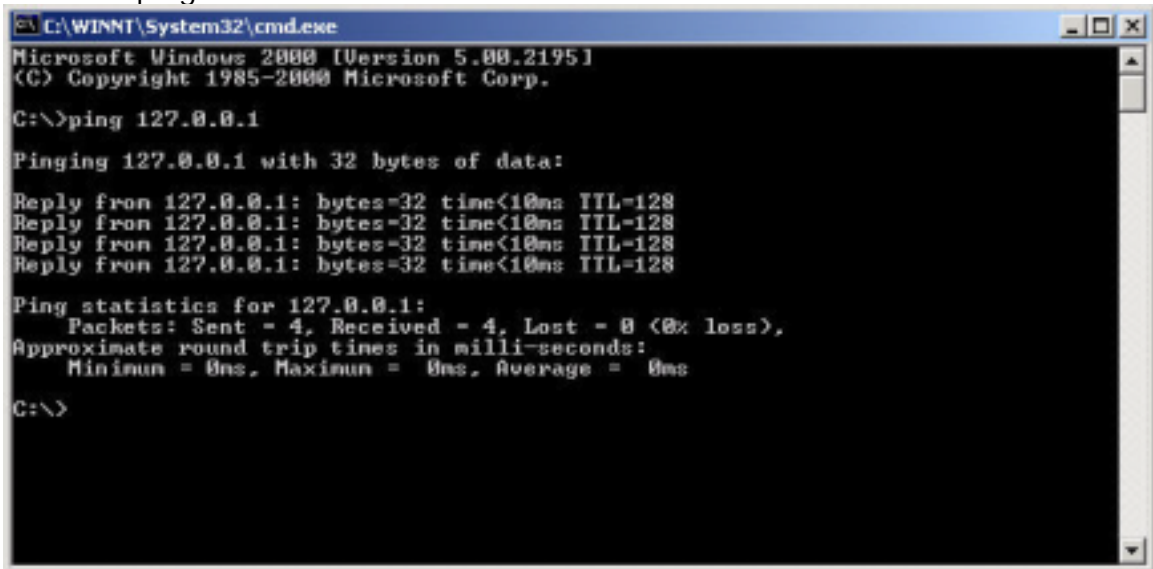
2. Type **Command** in the open field for Win 95, Win 98 and Win ME.
Type **CMD** for Win NT and Win2000
3. Click **OK**.

A Command Prompt window similar to the one below will appear:



4. At the command prompt, type **Ping 127.0.0.1**.

A successful ping will look similar to the window below:



```
C:\WINNT\System32\cmd.exe
Microsoft Windows 2000 [Version 5.00.2195]
(C) Copyright 1985-2000 Microsoft Corp.

C:\>ping 127.0.0.1

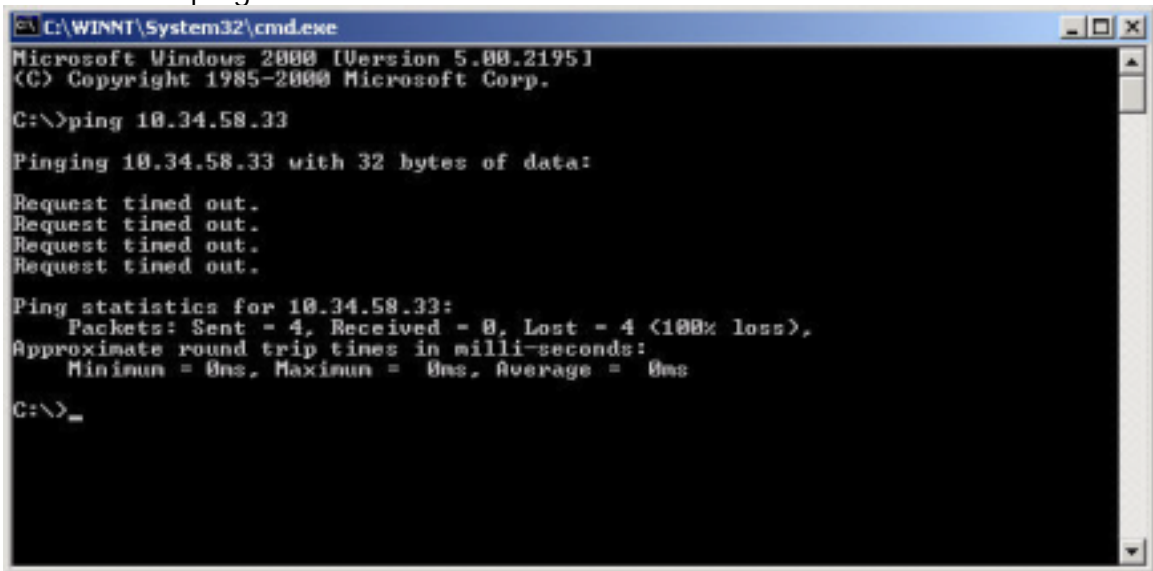
Pinging 127.0.0.1 with 32 bytes of data:

Reply from 127.0.0.1: bytes=32 time<10ms TTL=128
Reply from 127.0.0.1: bytes=32 time<10ms TTL=128
Reply from 127.0.0.1: bytes=32 time<10ms TTL=128
Reply from 127.0.0.1: bytes=32 time<10ms TTL=128

Ping statistics for 127.0.0.1:
    Packets: Sent = 4, Received = 4, Lost = 0 (0% loss),
Approximate round trip times in milli-seconds:
    Minimum = 0ms, Maximum = 0ms, Average = 0ms

C:\>
```

An unsuccessful ping looks similar to the window below:



```
C:\WINNT\System32\cmd.exe
Microsoft Windows 2000 [Version 5.00.2195]
(C) Copyright 1985-2000 Microsoft Corp.

C:\>ping 10.34.58.33

Pinging 10.34.58.33 with 32 bytes of data:

Request timed out.
Request timed out.
Request timed out.
Request timed out.

Ping statistics for 10.34.58.33:
    Packets: Sent = 4, Received = 0, Lost = 4 (100% loss),
Approximate round trip times in milli-seconds:
    Minimum = 0ms, Maximum = 0ms, Average = 0ms

C:\>_
```

If the Ping fails, TCP/IP is not properly installed on this PC. Refer to the procedures in the "TCP/IP Installation Procedure" for this PC's operating system.

5. Ping the IP address assigned to the PC.
 - a. If the ping is successful, proceed to the next step
 - i. If this Ping fails, ensure that the Network Interface Card is installed correctly and that TCP/IP is properly configured. Refer to the manual that came with the Network Interface Card and the "Configuring TCP/IP" document for this PC's operating system.
6. Ping the default gateway assigned to you in your "Frame Relay Addressing Sheet".
 - a. If the ping is successful, proceed to the next step
 - i. If this Ping fails, ensure that the cabling has been properly hooked up to both devices and verify that the router is powered on. If cabling is correct, ensure that the IP address assigned to this PC follows the guidelines provided in the "Frame Relay IP Addressing Sheet".
7. Ping the preferred DNS server assigned in the "Frame Relay IP Addressing Sheet".
 - a. If the ping is successful, proceed to the next step
 - i. If this Ping fails, contact Illinois State Police.
8. Ping the alternate DNS server assigned in the "Frame Relay IP Addressing Sheet".
 - a. If the ping is successful, proceed to the next step
 - i. If this Ping fails, contact Illinois State Police.

9. Ping the CBT server by name to test DNS settings. Ping cbt.isp.state.il.us
 - a. If the Ping is successful, this PC is properly configured to connect to LEADS 2000.
 - i. If this Ping fails, contact Illinois State Police.