

Windows 2000 TCP/IP Configuration Procedure

NOTE: Locate your Windows2000 CD-ROM, it may be required during this procedure.

NOTE: Screen shots in this document are samples. Your screens may vary.

1. Right click on **My Network Places** icon on the Desktop.

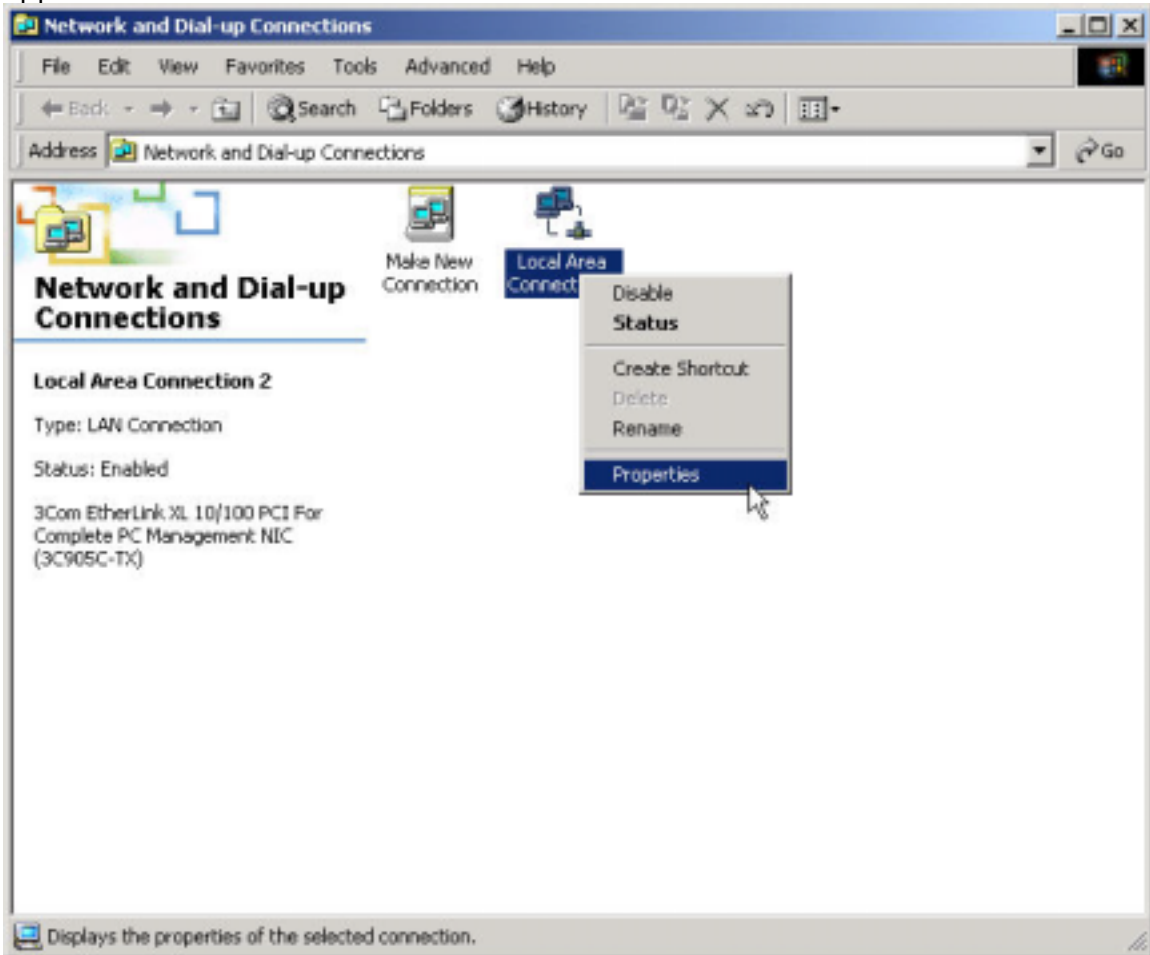
A pop-up menu similar to the one below will appear:



2. Click on **Properties**.

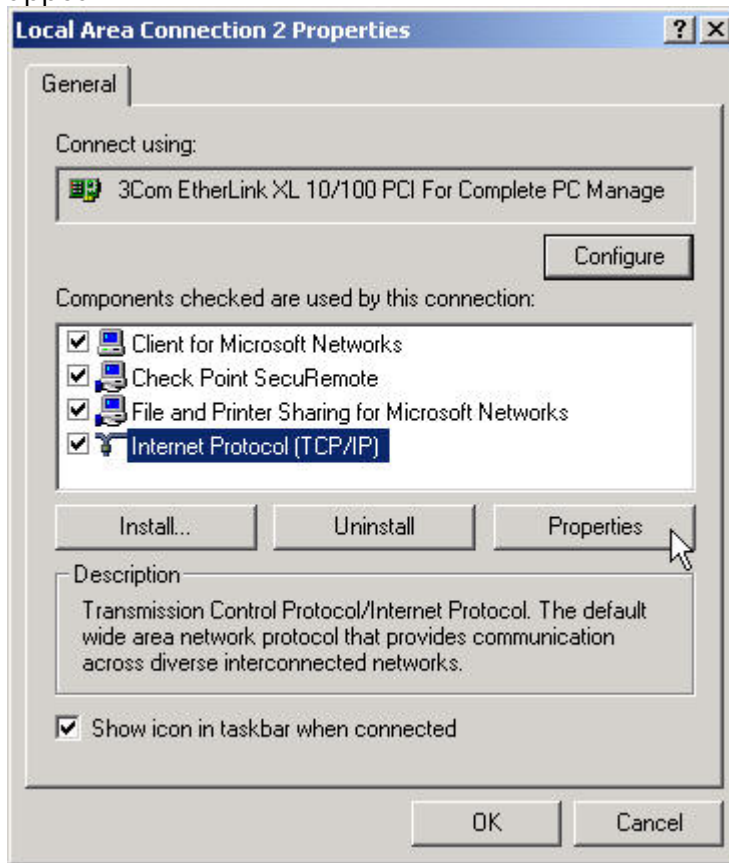
If **My Network Places** icon is not on the desktop, go to **Start>Settings>Control Panel** and double click on the **Network** icon.

A Network and Dial-Up Connections Window similar to the one below will appear:



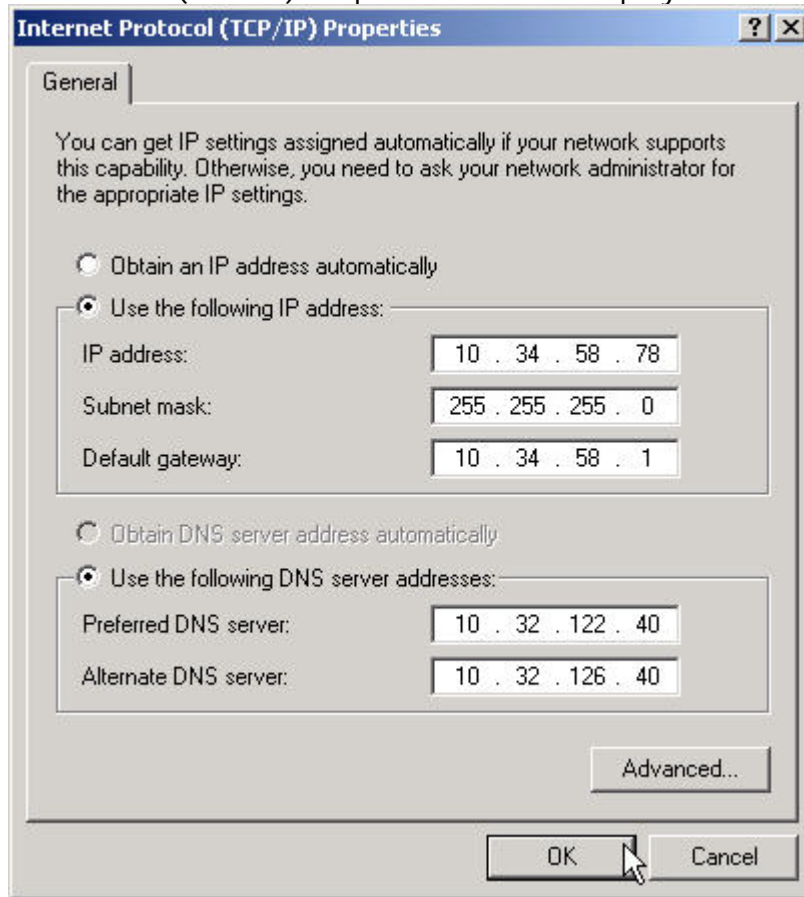
3. Right click on **Local Area Connection**.
4. Click on **Properties**.

A Local Area Connection Properties window similar to the one below will appear:



5. Click on **Internet Protocol (TCP/IP)** associated with the network adaptor used in LEADS 2000 set-up. Normally this is an Ethernet or token ring adaptor.
6. Click on Internet Protocol (TCP/IP), click on **Properties**.

The Internet Protocol (TCP/IP) Properties menu is displayed:



7. Ensure that the **radio button** next to **“Use the Following IP Address”** is checked.
8. Refer to the “Frame Relay IP Addressing Sheet” supplied by LEADS 2000 Staff for next several steps.
9. In the IP address field, enter a unique IP Address based on the guidelines in the “Frame Relay IP Addressing Sheet”.
10. In the Subnet Mask field, enter the Subnet Mask specified in the “Frame Relay IP Addressing Sheet”.
11. In the Default Gateway field, enter your default gateway specified.

12. Ensure that the **radio button** next to Use the Following DNS Servers Addresses is checked.
13. In the Preferred DNS Server field, enter the Preferred DNS Server specified in the "Frame Relay IP Addressing Sheet".
14. In the Alternate DNS Server field, enter the Alternate DNS Server address specified in the "Frame Relay IP Addressing Sheet".
15. Click **OK** to return to the Local Area Connections Menu.
16. Click **OK** to return to the Network and Dial-up Connections Menu.
17. Click **OK** to close the Network and Dial-up Connections Menu to return to the desktop.
18. Restart the PC if prompted.
19. Supply your **Windows2000 CD-ROM** to copy files if requested to do so.
20. Restart the machine if requested.
21. Proceed to the "Verifying IP Connectivity" document.