

## Windows 2000 TCP/IP Installation Procedure

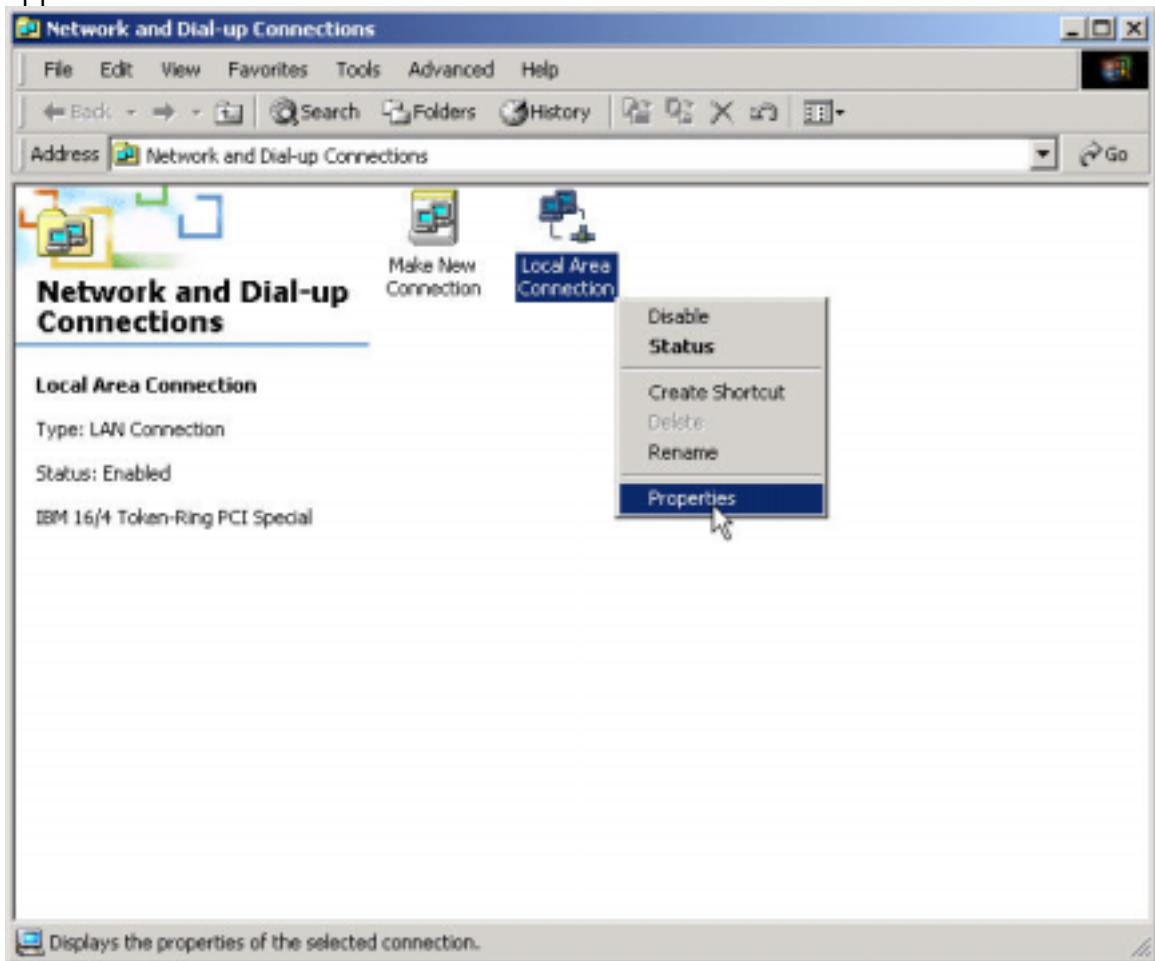
TCP/IP protocol is a requirement to access the LEADS 2000 application. First you must verify whether TCP/IP is installed on the PC.

**NOTE:** Locate your Windows 2000 CD-ROM, it may be required during this procedure. In some cases your setup files from the CD-ROM may be copied to the hard-drive.

**NOTE:** Screen shots in this document are samples. Your screens may vary.

1. Click **Start>Settings>Control Panel**.
2. Double click on the “**Network and Dial-up Connections Icon**”

A Network and Dial-up Connections window similar to the one below will appear:

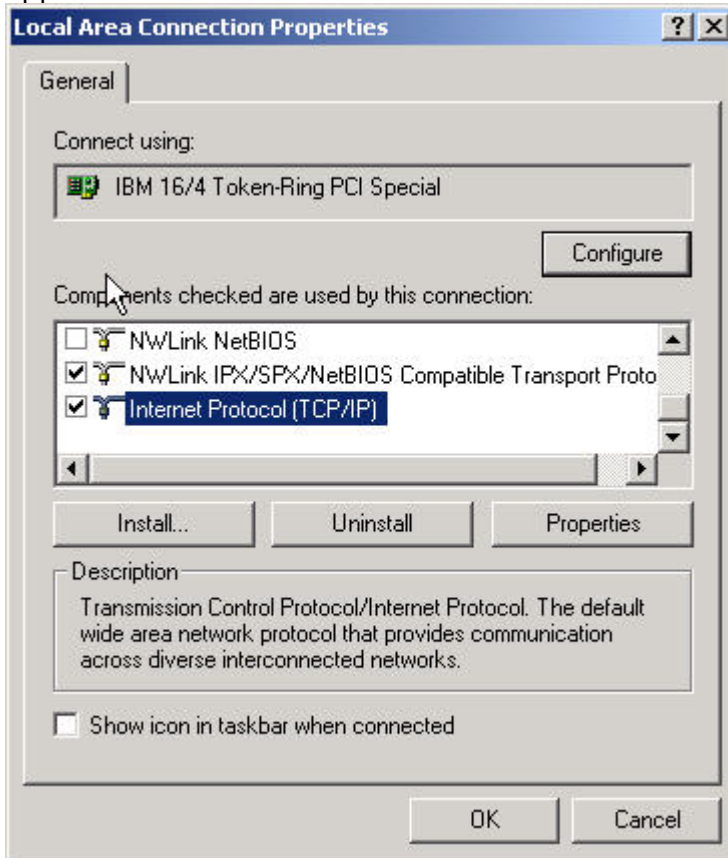


**Note:** If you have multiple network adaptors, click on the network adaptor associated with LEADS 2000 setup.

3. Right click **Local Area Connection**.

4. Click **Properties**.

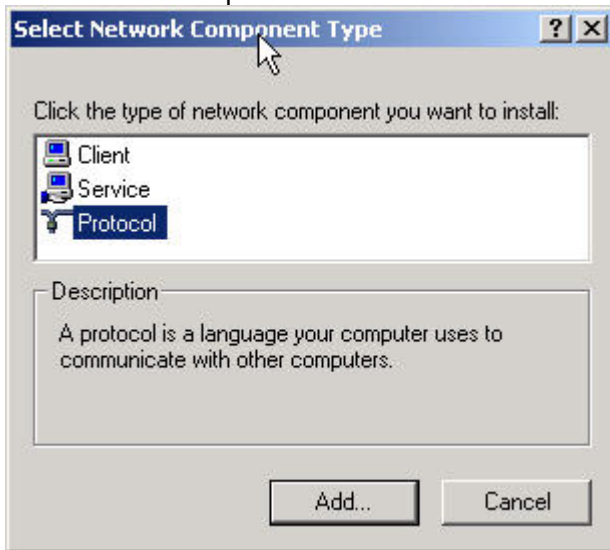
A Local Area Connection Properties window similar to the one below will appear:



5. If you see **Internet Protocol (TCP/IP)** in the components window, with the check box marked as above, TCP/IP is already installed. Proceed to the "Configuring TCP/IP for Windows 2000" document. If not, continue to the next step of this document.

6. Click the **Install...** button.

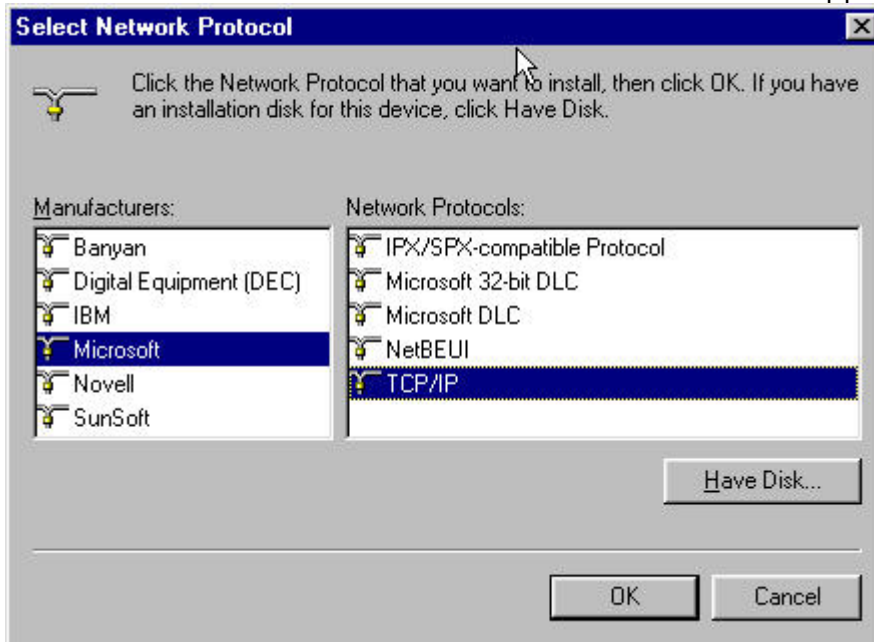
A Network Component window similar to the one below will appear:



7. Click the **Protocol** button.

8. Click the **Add...** button.

A Network Protocol window similar to the one below will appear:



9. Click **Microsoft** from the Manufactures list.

10. Click **TCP/IP** from the Network Protocols list.

11. Click **OK**.

12. Supply the **Windows 2000 CD-ROM** if requested.
13. Reboot the machine if requested.
14. Proceed to the "Configuring TCP/IP Protocol for Windows 2000" document.