

SECTION I - CRIME TRENDS

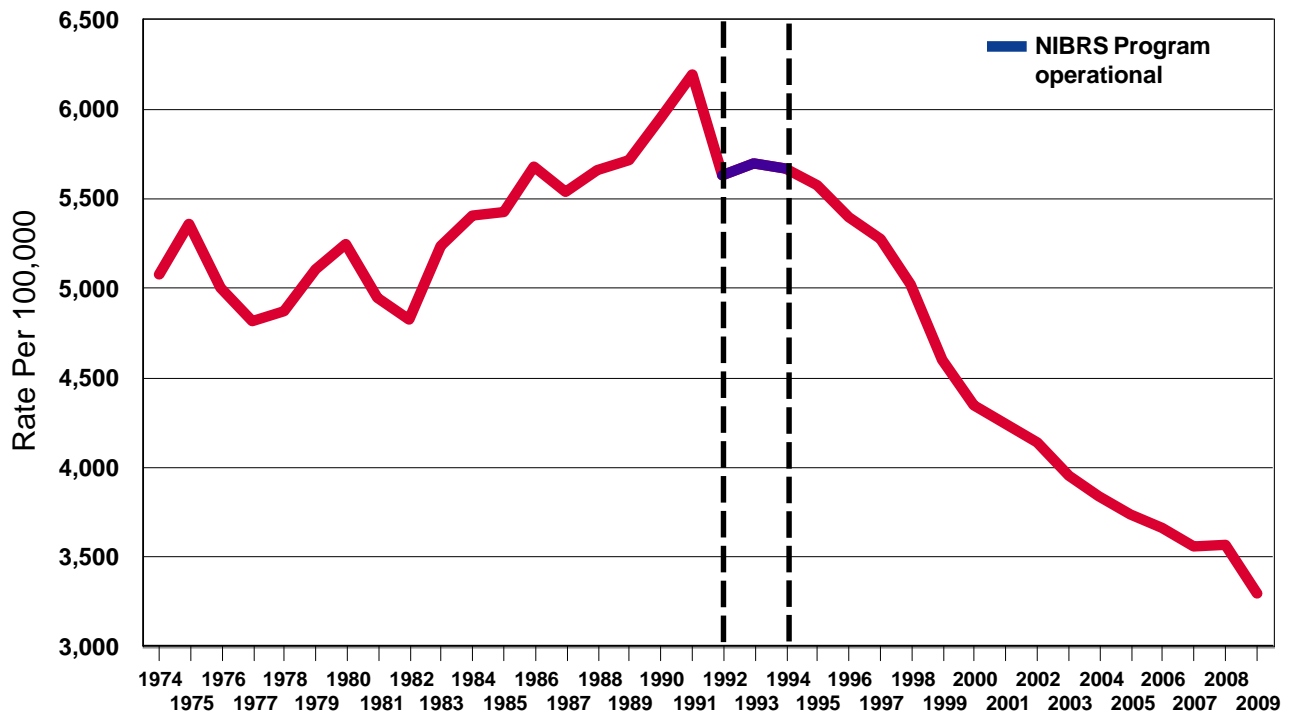
Crime Trends - A Historical Perspective

Historical information is intended to provide a comprehensive perspective of crime trends. The graph below illustrates the general trend of crimes reported in Illinois from 1974 to 2009. The Crime Index is composed of selected offenses used to gauge fluctuations in the overall volume and rate of crime reported to law enforcement. Offenses selected are violent crimes against persons including murder, criminal sexual assault, robbery, and aggravated assault/battery (including attempted murder and ritual mutilation); and crimes against property including burglary, theft (including burglary from a motor vehicle), motor vehicle theft, and arson.

Crime trends may be analyzed using two separate methods: crime volume and crime rates. Crime volume is merely the aggregate total of the Crime Index. By comparing the crime volume from year to year, trends in the number and types of crimes reported to police can be studied. Crime rates are compiled to compensate for the changes in the size of population. Crime rates are generally expressed as the total number of index crimes per 100,000 inhabitants.

The crime rate for the state of Illinois is shown for each year from 1974 through 2009. The crime rate is calculated by dividing the number of crimes reported to police by the jurisdictional population, and multiplying that number by 100,000.

Illinois Crime Index Offense Rate 1974-2009



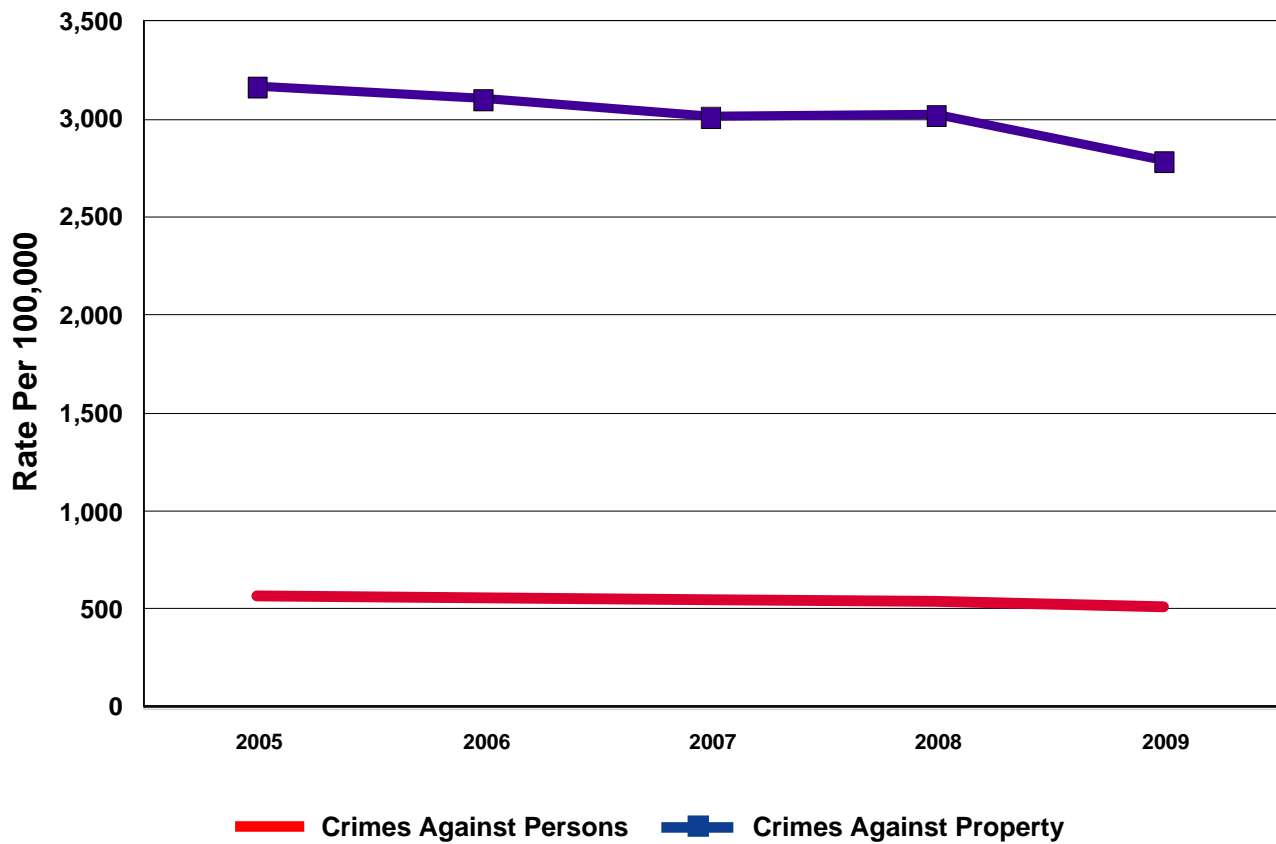
Considerations for interpretation:

In 1992, the Revised Illinois Uniform Crime Reporting Program, operating under the Federal Bureau of Investigation's National Incident Based Reporting System (NIBRS) criteria, became operational. This new system was used to collect data in 1992 and 1993. In 1994, the use of NIBRS was discontinued and a new reporting procedure was implemented. Crime index offenses, crime index offense arrests, and drug crime arrests were required to be reported by law enforcement agencies. This procedure is still in use to date; however, the change in reporting procedures may have contributed to the decrease in Index offense rates in 1992 and 1993.

In 2009, there were a total of 12,135 monthly crime index offense reports submitted out of the 12,840 to be received annually. The 705 reports that were not submitted may have contributed to the decrease in Index offense volumes and rates for 2009.

Crime Trends - A Historical Perspective

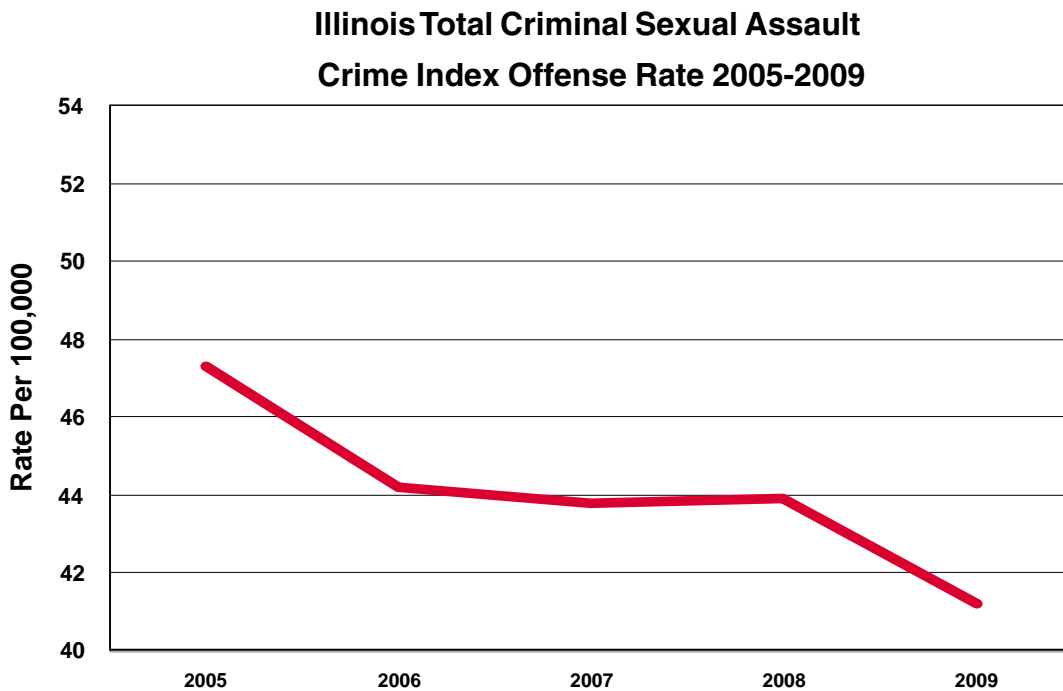
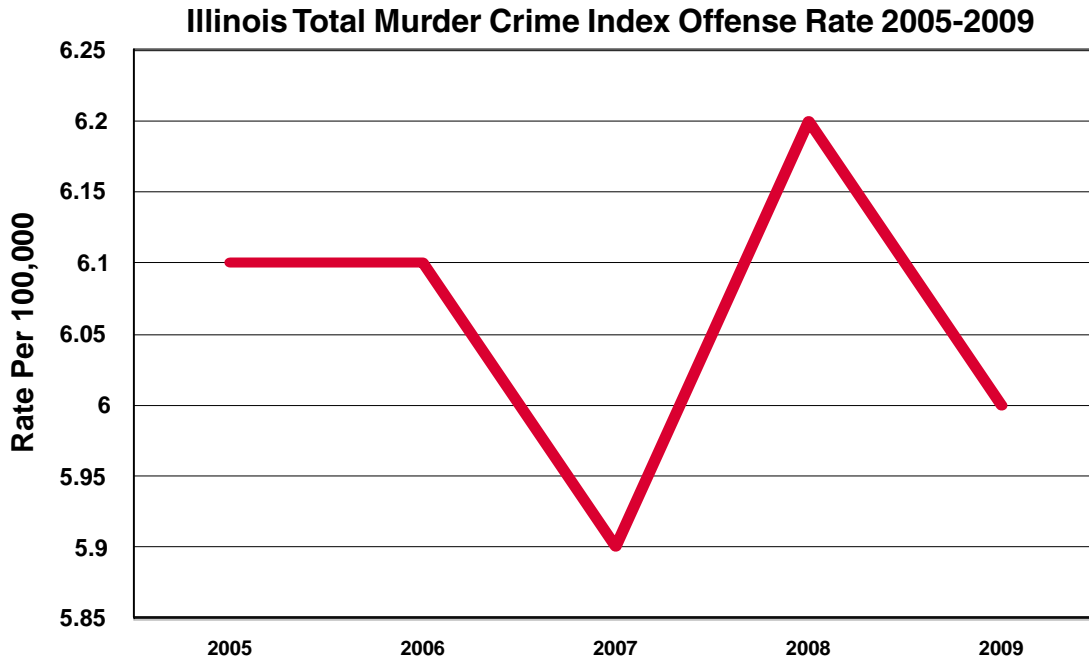
Violent crimes against persons offenses include murder, criminal sexual assault, robbery, and aggravated assault/battery (including attempted murder and ritual mutilation). Violent crimes against persons accounted for 15.4 percent of the crime index total in 2009. Crimes against property offenses include burglary, theft (including burglary from a motor vehicle), motor vehicle theft, and arson. Crimes against property accounted for 84.6 percent of the crime index total in 2009.



Note: See page 18 for the actual crime index offense rates and total number of offenses reported in each category for 2005-2009.

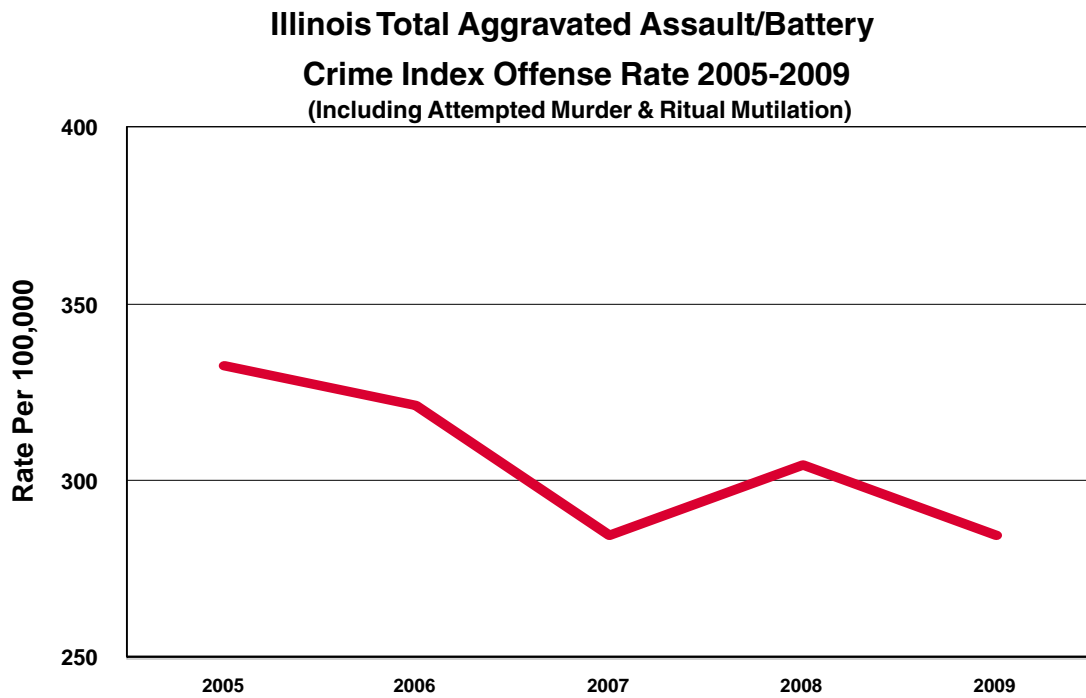
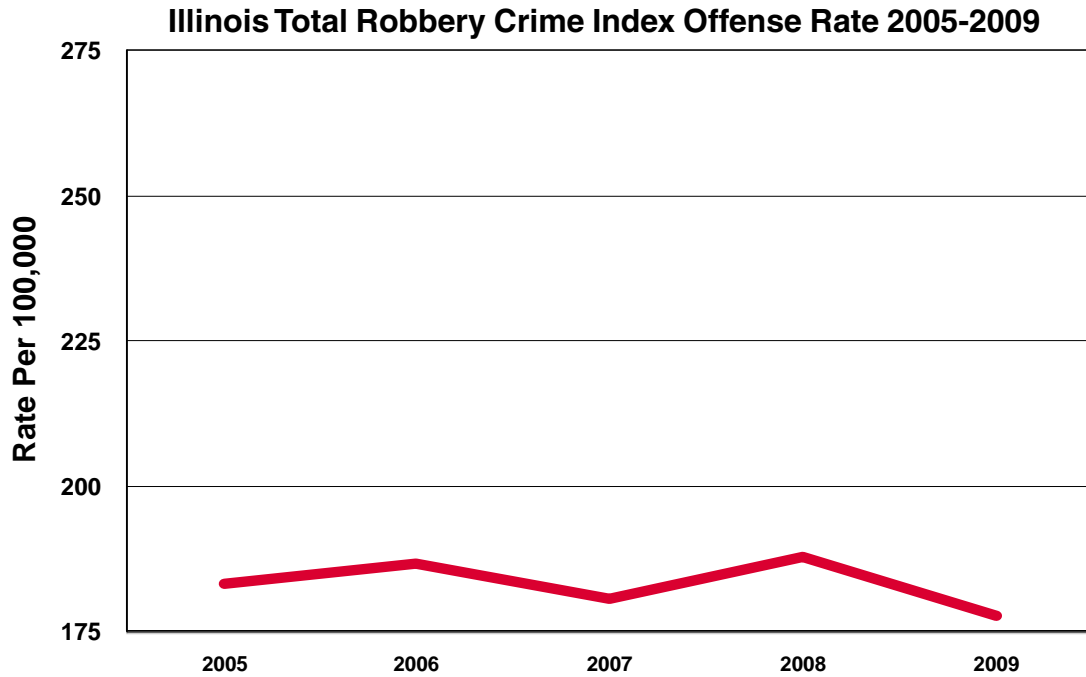
Crime Trends - A Historical Perspective

Violent crimes against persons crime index offense rates decreased for all categories. It is important to note there were 705 delinquent monthly reports out of 12,840 monthly reports to be submitted, which may have influenced the decrease. Murder and criminal sexual assault remain the smallest percentage of the overall violent crimes against persons crime index offense total.



Note: See page 18 for the actual crime index offense rates and total number of offenses reported in each category for 2005-2009.

Crime Trends - A Historical Perspective

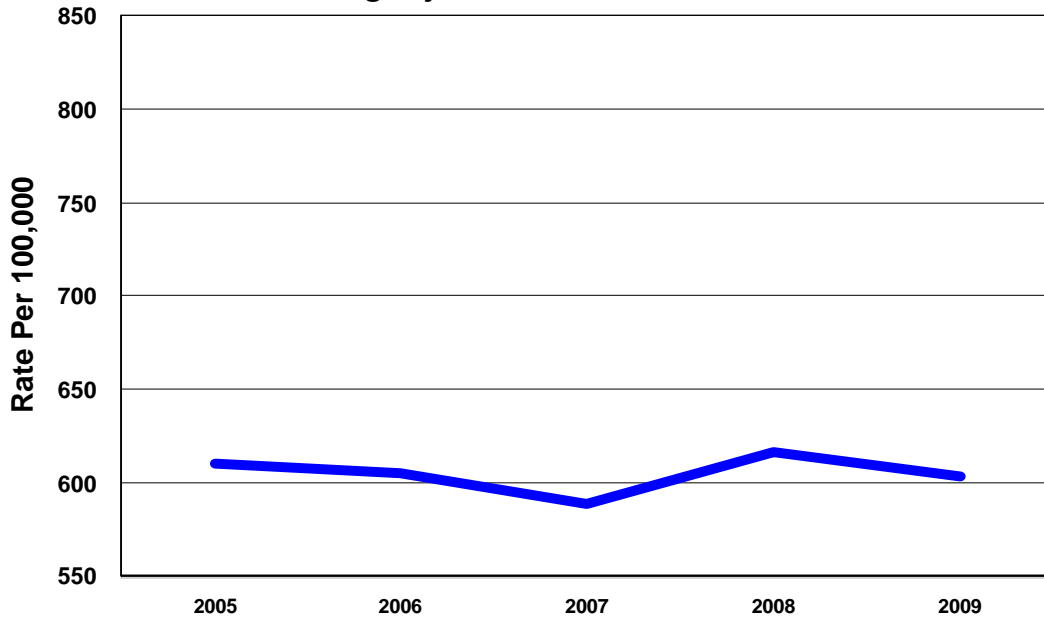


Note: See page 18 for the actual crime index offense rates and total number of offenses reported in each category for 2005-2009.

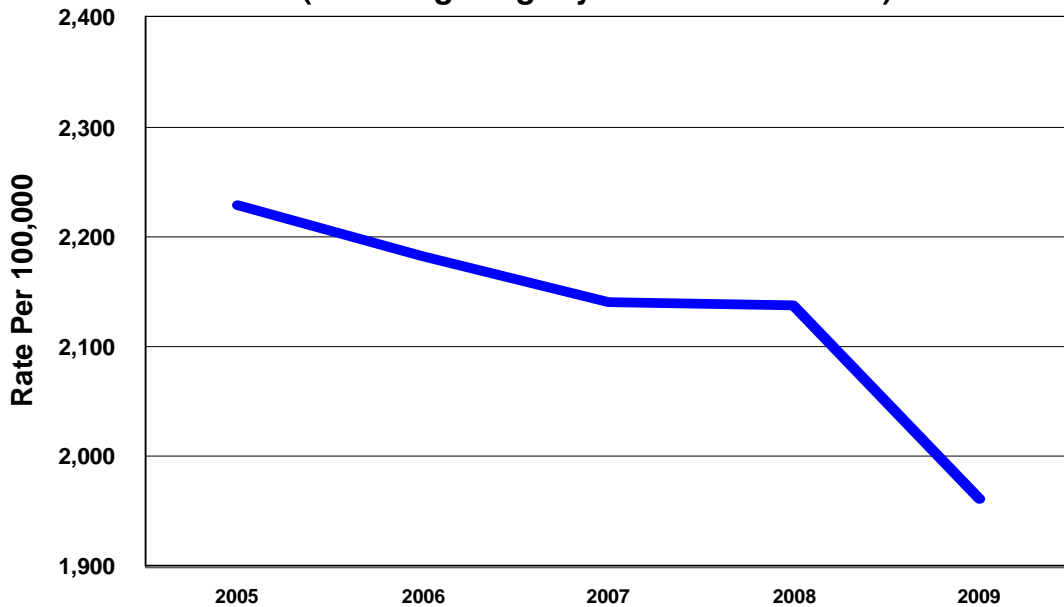
Crime Trends - A Historical Perspective

Crimes against property crime index offense rates declined in 2009. It is important to note there were 705 delinquent monthly reports out of 12,840 monthly reports to be submitted, which may have influenced the decreases. Motor vehicle theft and arson remain the smallest percentage of the overall crimes against property crime index offense total.

Illinois Total Burglary Crime Index Offense Rate 2005-2009



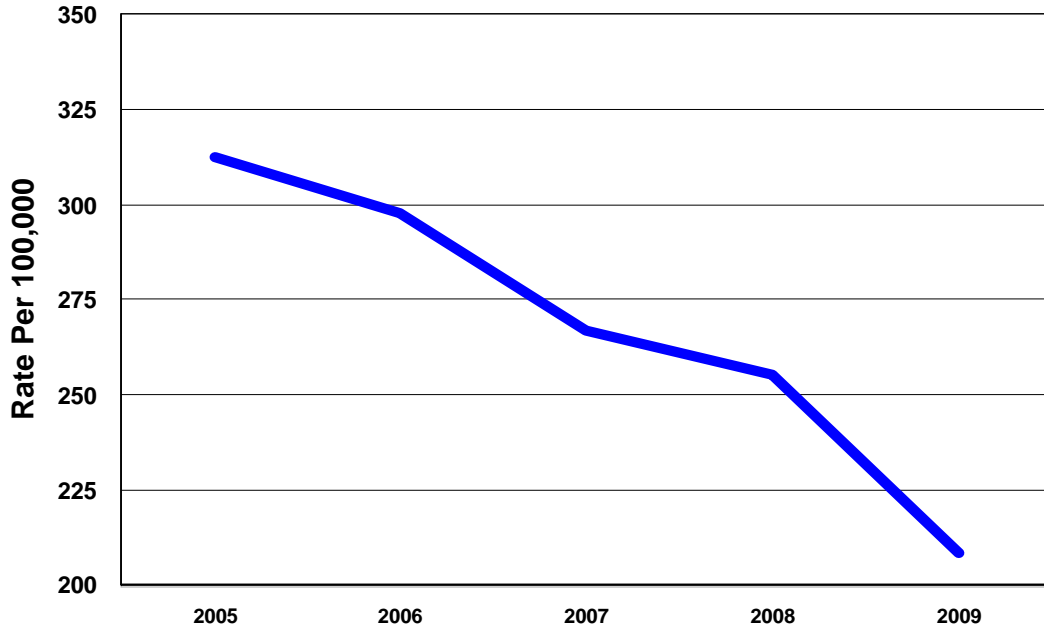
**Illinois Total Theft Crime Index Offense Rate 2005-2009
(Including Burglary from Motor Vehicle)**



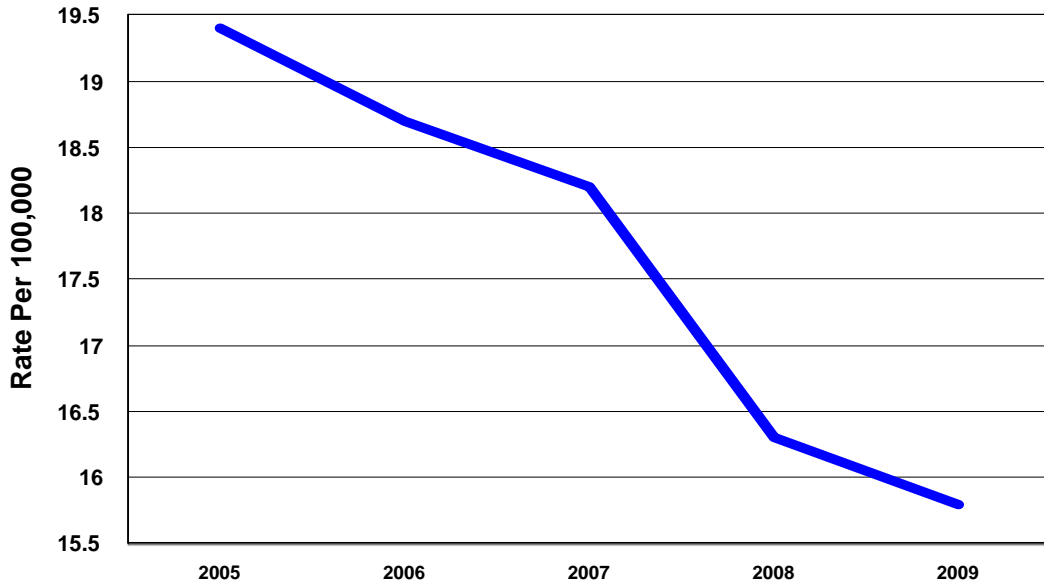
Note: See page 18 for the actual crime index offense rates and total number of offenses reported in each category for 2005-2009.

Crime Trends - A Historical Perspective

**Illinois Total Motor Vehicle Theft
Crime Index Offense Rate 2005-2009**



Illinois Total Arson Crime Index Offense Rate 2005-2009



Note: See page 18 for the actual crime index offense rates and total number of offenses reported in each category for 2005-2009.

Crime Trends - Violent Crimes/Property Crimes

Tables defined below provide comparisons of offense totals and rates among both independent and grouped jurisdictions of interest.

State Total - Statewide offense totals.

State Total Minus Chicago Police Department (CPD) - Statewide offense totals minus Chicago Police Department offense totals.

Chicago Police Department Total - Chicago Police Department offense totals.

Cook County Total - Cook County offense totals including Chicago Police Department offense totals.

Suburban Cook County Total - Cook County offense totals minus Chicago Police Department offense totals.

Collar Counties Total - Offense totals reported by sheriffs' offices, police departments, colleges, and universities located in DuPage, Kane, Lake, McHenry, and Will Counties.

Urban Counties Total - Offense totals reported by sheriffs' offices, police departments, colleges, and universities located in the following counties:

Adams	DeKalb	Knox	McLean	Sangamon	Whiteside
Boone	Jackson	LaSalle	Ogle	St. Clair	Williamson
Champaign	Kankakee	Macon	Peoria	Tazewell	Winnebago
Coles	Kendall	Madison	Rock Island	Vermilion	

Rural Counties Total - Offense totals reported by sheriffs' offices, police departments, colleges, and universities located in the following counties:

Alexander	Cumberland	Greene	JoDaviess	McDonough	Pulaski	Wabash
Bond	DeWitt	Grundy	Johnson	Menard	Putnam	Warren
Brown	Douglas	Hamilton	Lawrence	Mercer	Randolph	Washington
Bureau	Edgar	Hancock	Lee	Monroe	Richland	Wayne
Calhoun	Edwards	Hardin	Livingston	Montgomery	Saline	White
Carroll	Effingham	Henderson	Logan	Morgan	Schuyler	Woodford
Cass	Fayette	Henry	Macoupin	Moultrie	Scott	
Christian	Ford	Iroquois	Marion	Perry	Shelby	
Clark	Franklin	Jasper	Marshall	Piatt	Stark	
Clay	Fulton	Jefferson	Mason	Pike	Stephenson	
Clinton	Gallatin	Jersey	Massac	Pope	Union	

Counties are considered urban if their population consists of at least 50,000 residents or if they contribute at least 50,000 residents to a total Metropolitan Statistical Area (MSA) of 100,000. An area qualifies for recognition as an MSA in one of two ways: (1) if it includes a city of at least 50,000 population, or (2) if it includes an urbanized area of at least 50,000 population with a total metropolitan population of 100,000. The MSA comprises the central county or counties containing the core, plus adjacent outlying counties having a high degree of social and economical integration with the central county as measured through commuting ties. Those that are not part of an MSA are classified as rural counties.

State Total Crime Index Offenses 2005-2009

INDEX OFFENSE	YEAR	% OF TOTAL	NUMBER OF OFFENSES	% VOLUME CHANGE	CRIME RATE PER 100,000	% RATE CHANGE
Murder	2005	0.16	770	-1.3	6.1	-1.6
	2006	0.17	786	+2.1	6.2	+1.6
	2007	0.16	751	-4.5	5.9	-4.8
	2008	0.17	791	+5.3	6.2	+5.1
	2009	0.18	773	-2.3	6.0	-3.2
Criminal Sexual Assault	2005	1.27	6,017	+2.6	47.3	+2.2
	2006	1.22	5,729	-4.8	44.9	-5.1
	2007	1.23	5,625	-1.8	43.8	-2.4
	2008	1.23	5,646	+0.4	43.9	+0.2
	2009	1.25	5,316	-5.8	41.2	-6.2
Robbery	2005	4.90	23,283	+3.0	183.1	+2.5
	2006	5.09	23,941	+2.8	187.6	+2.5
	2007	5.07	23,161	-3.3	180.5	-3.8
	2008	5.26	24,140	+4.2	187.8	+4.0
	2009	5.39	22,940	-5.0	177.8	-5.3
Agg. Asslt./Batt., Att. Murder & Ritual Mutilation	2005	8.89	42,278	+0.9	332.5	+0.5
	2006	8.76	41,222	-2.5	323.0	-2.9
	2007	8.92	40,772	-1.1	317.7	-1.6
	2008	8.53	39,134	-4.0	304.5	-4.2
	2009	8.62	36,700	-6.2	284.5	-6.6
Violent Crimes Subtotal	2005	15.22	72,348	+1.7	569.1	+1.2
	2006	15.23	71,678	-0.9	561.6	-1.3
	2007	15.38	70,309	-1.9	547.9	-2.4
	2008	15.20	69,711	-0.9	542.4	-1.0
	2009	15.44	65,729	-5.7	509.5	-6.1
Burglary	2005	16.33	77,635	+2.0	610.6	+1.5
	2006	16.52	77,749	+0.1	609.2	-0.2
	2007	16.53	75,552	-2.8	588.8	-3.3
	2008	17.28	79,260	+4.9	616.7	+4.7
	2009	18.29	77,850	-1.8	603.4	-2.2
Theft	2005	59.58	283,312	-4.3	2,228.4	-4.7
	2006	59.70	281,018	-0.8	2,201.8	-1.2
	2007	60.08	274,602	-2.3	2,140.0	-2.8
	2008	59.91	274,707	0.0	2,137.4	-0.1
	2009	59.47	253,184	-7.8	1,962.4	-8.2
Motor Vehicle Theft	2005	8.36	39,739	-2.6	312.6	-3.0
	2006	8.05	37,900	-4.6	296.9	-5.0
	2007	7.50	34,270	-9.6	267.1	-10.0
	2008	7.15	32,784	-4.3	255.1	-4.5
	2009	6.32	26,917	-17.9	208.6	-18.2
Arson	2005	0.52	2,463	+0.7	19.4	+0.5
	2006	0.51	2,385	-3.2	18.7	-3.6
	2007	0.51	2,338	-2.0	18.2	-2.7
	2008	0.46	2,096	-10.4	16.3	-10.4
	2009	0.48	2,040	-2.7	15.8	-3.1
Property Crimes Subtotal	2005	84.78	403,149	-2.9	3,171.0	-3.4
	2006	84.77	399,052	-1.0	3,126.5	-1.4
	2007	84.62	386,762	-3.1	3,014.1	-3.6
	2008	84.80	388,847	+0.5	3,025.4	+0.4
	2009	84.56	359,997	-7.4	2,790.3	-7.8
Crime Index Total	2005	100.00	475,497	-2.3	3,740.1	-2.7
	2006	100.00	470,730	-1.0	3,688.1	-1.4
	2007	100.00	457,071	-2.9	3,562.0	-3.4
	2008	100.00	458,558	+0.3	3,567.8	+0.2
	2009	100.00	425,720	-7.2	3,299.8	-7.5

State Total Minus CPD Illinois Crime Index Offenses 2005-2009

INDEX OFFENSE	YEAR	% OF TOTAL	NUMBER OF OFFENSES	% VOLUME CHANGE	CRIME RATE PER 100,000	% RATE CHANGE
Murder	2005	0.10	320	-3.6	3.2	-5.9
	2006	0.10	315	-1.6	3.2	0.0
	2007	0.10	309	-1.9	3.1	-3.1
	2008	0.10	279	-9.7	2.8	-9.7
	2009	0.12	314	+12.5	3.1	+10.7
Criminal Sexual Assault	2005	1.41	4,322	+5.3	43.9	+4.5
	2006	1.37	4,142	-4.2	41.8	-4.8
	2007	1.36	4,003	-3.4	40.0	-4.3
	2008	1.40	4,052	+1.2	40.5	+1.3
	2009	1.43	3,877	-4.3	38.6	-4.7
Robbery	2005	2.37	7,253	+9.1	73.6	+8.4
	2006	2.64	7,988	+10.1	80.5	+9.4
	2007	2.62	7,723	-3.3	77.2	-4.1
	2008	2.57	7,443	-3.6	74.3	-3.8
	2009	2.60	7,056	-5.2	70.2	-5.5
Agg. Asslt./Batt., Att. Murder & Ritual Mutilation	2005	7.92	24,245	+5.1	246.1	+4.4
	2006	7.80	23,643	-2.5	238.3	-3.2
	2007	7.90	23,305	-1.4	233.1	-2.2
	2008	7.62	22,074	-5.3	220.4	-5.4
	2009	7.74	20,957	-5.1	208.6	-5.4
Violent Crimes Subtotal	2005	11.81	36,140	+5.8	366.9	+5.1
	2006	11.91	36,088	-0.1	363.8	-0.8
	2007	11.99	35,340	-2.1	353.4	-2.9
	2008	11.69	33,848	-4.2	337.9	-4.4
	2009	11.89	32,204	-4.9	320.5	-5.1
Burglary	2005	17.10	52,337	+1.5	531.3	+0.9
	2006	17.63	53,438	+2.1	538.6	+1.4
	2007	17.23	50,805	-4.9	508.1	-5.7
	2008	18.34	53,083	+4.5	530.0	+4.3
	2009	18.95	51,330	-3.3	510.8	-3.6
Theft	2005	65.37	200,077	-0.6	2,031.0	-1.3
	2006	64.60	195,786	-2.1	1,973.5	-2.8
	2007	64.90	191,322	-2.3	1,913.5	-3.0
	2008	64.65	187,168	-2.2	1,868.7	-2.3
	2009	64.41	174,505	-6.8	1,736.6	-7.1
Motor Vehicle Theft	2005	5.64	17,248	-4.2	175.1	-4.8
	2006	5.31	16,102	-6.6	162.3	-7.3
	2007	5.33	15,714	-2.4	157.2	-3.1
	2008	4.82	13,947	-11.2	139.2	-11.5
	2009	4.22	11,441	-18.0	113.9	-18.2
Arson	2005	0.58	1,780	+6.3	18.1	+5.8
	2006	0.55	1,673	-6.0	16.9	-6.6
	2007	0.55	1,633	-2.4	16.3	-3.6
	2008	0.51	1,465	-10.3	14.6	-10.4
	2009	0.53	1,431	-2.3	14.2	-2.7
Property Crimes Subtotal	2005	88.19	269,910	-1.0	2,739.8	-1.7
	2006	88.09	266,999	-1.1	2,691.3	-1.8
	2007	88.01	259,474	-2.8	2,595.1	-3.6
	2008	88.31	255,663	-1.5	2,552.6	-1.6
	2009	88.11	238,707	-6.6	2,375.6	-6.9
Crime Index Total	2005	100.00	306,050	-0.2	3,106.7	-0.9
	2006	100.00	303,087	-1.0	3,055.0	-1.7
	2007	100.00	294,814	-2.7	2,948.5	-3.5
	2008	100.00	289,511	-1.8	2,890.5	-2.0
	2009	100.00	270,911	-6.4	2,696.0	-6.7

Offenses reported in the State total minus CPD area account for 63.6% of the state crime index offense total.

Chicago Police Department Crime Index Offenses 2005-2009

INDEX OFFENSE	YEAR	% OF TOTAL	NUMBER OF OFFENSES	% VOLUME CHANGE	CRIME RATE PER 100,000	% RATE CHANGE
Murder	2005	0.27	450	+0.4	15.7	+0.6
	2006	0.28	471	+4.7	16.6	+5.7
	2007	0.27	442	-6.2	15.6	-6.0
	2008	0.30	512	+15.8	18.0	+15.4
	2009	0.30	459	-10.4	16.1	-10.6
Criminal Sexual Assault	2005	1.00	1,695	-3.5	59.2	-3.3
	2006	0.95	1,587	-6.4	55.8	-5.7
	2007	1.01	1,644	+3.6	58.0	+3.9
	2008	0.94	1,594	-3.0	56.2	-3.1
	2009	0.93	1,439	-9.7	50.4	-10.3
Robbery	2005	9.46	16,030	+0.4	560.1	+0.7
	2006	9.52	15,953	-0.5	561.2	+0.2
	2007	9.51	15,432	-3.3	544.7	-2.9
	2008	9.88	16,697	+8.2	588.6	+8.1
	2009	10.26	15,884	-4.9	556.7	-5.4
Agg. Asslt./Batt., Att. Murder & Ritual Mutilation	2005	10.64	18,033	-4.2	630.0	-4.0
	2006	10.49	17,579	-2.5	618.4	-1.8
	2007	10.75	17,434	-0.8	615.3	-0.5
	2008	10.09	17,060	-2.1	601.4	-2.3
	2009	10.17	15,743	-7.7	551.8	-8.2
Violent Crimes Subtotal	2005	21.37	36,208	-2.1	1,265.0	-1.9
	2006	21.23	35,590	-1.7	1,252.1	-1.0
	2007	21.55	34,952	-1.8	1,233.6	-1.5
	2008	21.21	35,863	+2.6	1,264.3	+2.5
	2009	21.66	33,525	-6.5	1,175.0	-7.1
Burglary	2005	14.93	25,298	+3.1	883.9	+3.3
	2006	14.50	24,311	-3.9	855.3	-3.2
	2007	15.26	24,754	+1.8	873.7	+2.2
	2008	15.49	26,177	+5.7	922.8	+5.6
	2009	17.13	26,520	+1.3	929.5	+0.7
Theft	2005	49.12	83,235	-12.1	2,908.0	-11.9
	2006	50.84	85,232	+2.4	2,998.5	+3.1
	2007	51.31	83,219	-2.4	2,937.2	-2.0
	2008	51.78	87,539	+5.2	3,086.0	+5.1
	2009	50.82	78,679	-10.1	2,757.7	-10.6
Motor Vehicle Theft	2005	13.27	22,491	-1.3	785.8	-1.1
	2006	13.00	21,798	-3.1	766.9	-2.4
	2007	11.45	18,568	-14.8	655.3	-14.6
	2008	11.14	18,837	+1.4	664.1	+1.3
	2009	10.00	15,476	-17.8	542.4	-18.3
Arson	2005	0.40	683	-11.5	23.9	-11.2
	2006	0.42	712	+4.2	25.0	+4.6
	2007	0.43	704	-1.1	24.8	-0.8
	2008	0.37	630	-10.5	22.2	-10.5
	2009	0.39	609	-3.3	21.3	-4.1
Property Crimes Subtotal	2005	78.63	133,239	-6.7	4,655.1	-6.4
	2006	78.77	132,053	-0.9	4,645.6	-0.2
	2007	78.45	127,245	-3.6	4,491.0	-3.3
	2008	78.79	133,183	+4.7	4,695.1	+4.5
	2009	78.34	121,284	-8.9	4,250.9	-9.5
Crime Index Total	2005	100.00	169,447	-5.7	5,920.1	-5.5
	2006	100.00	167,643	-1.1	5,897.7	-0.4
	2007	100.00	162,197	-3.2	5,724.6	-2.9
	2008	100.00	169,046	+4.2	5,959.3	+4.1
	2009	100.00	154,809	-8.4	5,426.0	-8.9

Offenses reported by the Chicago Police Department account for 36.4% of the state crime index offense total.

Cook County Crime Index Offenses 2005-2009

INDEX OFFENSE	YEAR	% OF TOTAL	NUMBER OF OFFENSES	% VOLUME CHANGE	CRIME RATE PER 100,000	% RATE CHANGE
Murder	2005	0.22	550	-0.7	10.3	-1.0
	2006	0.23	579	+5.3	10.9	+5.8
	2007	0.22	522	-9.8	9.9	-9.2
	2008	0.24	586	+12.3	11.1	+12.1
	2009	0.24	555	-5.3	10.5	-5.4
Criminal Sexual Assault	2005	0.97	2,417	+0.8	45.4	+0.9
	2006	0.95	2,331	-3.6	44.0	-3.1
	2007	0.96	2,300	-1.3	43.5	-1.1
	2008	0.90	2,232	-3.0	42.2	-3.0
	2009	0.92	2,080	-6.8	39.3	-6.9
Robbery	2005	7.49	18,685	+1.7	350.7	+1.7
	2006	7.70	19,000	+1.7	358.2	+2.1
	2007	7.63	18,307	-3.6	346.2	-3.4
	2008	7.91	19,547	+6.8	369.9	+6.8
	2009	8.19	18,574	-5.0	350.8	-5.2
Agg. Asslt./Batt., Att. Murder & Ritual Mutilation	2005	8.98	22,389	-1.6	420.2	-1.6
	2006	8.67	21,396	-4.4	403.4	-4.0
	2007	8.62	20,675	-3.4	390.9	-3.1
	2008	8.12	20,081	-2.9	380.0	-2.8
	2009	8.18	18,556	-7.6	350.5	-7.8
Violent Crimes Subtotal	2005	17.66	44,041	-0.1	826.6	-0.1
	2006	17.56	43,306	-1.7	816.5	-1.2
	2007	17.43	41,804	-3.5	790.4	-3.2
	2008	17.17	42,446	+1.5	803.1	+1.6
	2009	17.53	39,765	-6.3	751.0	-6.5
Burglary	2005	14.92	37,216	+3.1	698.5	+3.1
	2006	14.68	36,204	-2.7	682.6	-2.3
	2007	15.23	36,526	+0.9	690.6	+1.2
	2008	15.75	38,951	+6.6	737.0	+6.7
	2009	17.38	39,426	+1.2	744.6	+1.0
Theft	2005	55.27	137,825	-8.6	2,586.9	-8.6
	2006	55.95	138,002	+0.1	2,602.0	+0.6
	2007	56.60	135,726	-1.6	2,566.4	-1.4
	2008	56.82	140,495	+3.5	2,658.3	+3.6
	2009	55.92	126,868	-9.7	2,396.1	-9.9
Motor Vehicle Theft	2005	11.73	29,245	-2.4	548.9	-2.4
	2006	11.36	28,025	-4.2	528.4	-3.7
	2007	10.31	24,719	-11.8	467.4	-11.5
	2008	9.88	24,419	-1.2	462.0	-1.2
	2009	8.77	19,896	-18.5	375.8	-18.7
Arson	2005	0.42	1,045	-7.7	19.6	-7.5
	2006	0.45	1,119	+7.1	21.1	+7.7
	2007	0.42	1,017	-9.1	19.2	-9.0
	2008	0.38	933	-8.3	17.7	-7.8
	2009	0.41	926	-0.8	17.5	-1.1
Property Crimes Subtotal	2005	82.34	205,331	-5.8	3,854.0	-5.8
	2006	82.44	203,350	-1.0	3,834.1	-0.5
	2007	82.57	197,988	-2.6	3,743.6	-2.4
	2008	82.83	204,798	+3.4	3,875.0	+3.5
	2009	82.47	187,116	-8.6	3,534.0	-8.8
Crime Index Total	2005	100.00	249,372	-4.9	4,680.6	-4.9
	2006	100.00	246,656	-1.1	4,650.7	-0.6
	2007	100.00	239,792	-2.8	4,534.1	-2.5
	2008	100.00	247,244	+3.1	4,678.1	+3.2
	2009	100.00	226,881	-8.2	4,285.1	-8.4

Offenses reported in Cook County account for 53.3% of the state crime index offense total.

Suburban Cook County Crime Index Offenses 2005-2009

INDEX OFFENSE	YEAR	% OF TOTAL	NUMBER OF OFFENSES	% VOLUME CHANGE	CRIME RATE PER 100,000	% RATE CHANGE
Murder	2005	0.13	100	-5.7	4.1	-4.7
	2006	0.14	108	+8.0	4.4	+7.3
	2007	0.10	80	-25.9	3.3	-25.0
	2008	0.09	74	-7.5	3.0	-9.1
	2009	0.13	96	+29.7	3.9	+30.0
Criminal Sexual Assault	2005	0.90	722	+12.8	29.3	+12.7
	2006	0.94	744	+3.0	30.2	+3.1
	2007	0.85	656	-11.8	26.7	-11.6
	2008	0.82	638	-2.7	26.1	-2.2
	2009	0.89	641	+0.5	26.3	+0.8
Robbery	2005	3.32	2,655	+10.6	107.7	+10.3
	2006	3.86	3,047	+14.8	123.8	+14.9
	2007	3.71	2,875	-5.6	117.1	-5.4
	2008	3.64	2,850	-0.9	116.4	-0.6
	2009	3.73	2,690	-5.6	110.2	-5.3
Agg. Asslt./Batt., Att. Murder & Ritual Mutilation	2005	5.45	4,356	+10.8	176.7	+10.4
	2006	4.83	3,817	-12.4	155.1	-12.2
	2007	4.18	3,241	-15.1	132.0	-14.9
	2008	3.86	3,021	-6.8	123.4	-6.5
	2009	3.90	2,813	-6.9	115.2	-6.6
Violent Crimes Subtotal	2005	9.80	7,833	+10.7	317.7	+10.4
	2006	9.77	7,716	-1.5	313.5	-1.3
	2007	8.83	6,852	-11.2	279.1	-11.0
	2008	8.42	6,583	-3.9	268.9	-3.7
	2009	8.66	6,240	-5.2	255.6	-4.9
Burglary	2005	14.91	11,918	+3.0	483.4	+2.7
	2006	15.05	11,893	-0.2	483.2	0.0
	2007	15.17	11,772	-1.0	479.4	-0.8
	2008	16.34	12,774	+8.5	521.7	+8.8
	2009	17.91	12,906	+1.0	528.6	+1.3
Theft	2005	68.30	54,590	-2.9	2,214.1	-3.2
	2006	66.79	52,770	-3.3	2,144.1	-3.2
	2007	67.67	52,507	-0.5	2,138.5	-0.3
	2008	67.72	52,956	+0.9	2,162.8	+1.1
	2009	66.86	48,189	-9.0	1,973.7	-8.7
Motor Vehicle Theft	2005	8.45	6,754	-5.8	273.9	-6.1
	2006	7.88	6,227	-7.8	253.0	-7.6
	2007	7.93	6,151	-1.2	250.5	-1.0
	2008	7.14	5,582	-9.3	228.0	-9.0
	2009	6.13	4,420	-20.8	181.0	-20.6
Arson	2005	0.45	362	+0.6	14.7	+0.7
	2006	0.52	407	+12.4	16.5	+12.2
	2007	0.40	313	-23.1	12.7	-23.0
	2008	0.39	303	-3.2	12.4	-2.4
	2009	0.44	317	+4.6	13.0	+4.8
Property Crimes Subtotal	2005	90.20	72,092	-4.3	2,924.0	-4.5
	2006	90.23	71,297	-1.1	2,896.9	-0.9
	2007	91.17	70,743	-0.8	2,881.2	-0.5
	2008	91.58	71,615	+1.2	2,924.9	+1.5
	2009	91.34	65,830	-8.1	2,696.2	-7.8
Crime Index Total	2005	100.00	79,925	-3.0	3,241.7	-3.3
	2006	100.00	79,013	-1.1	3,210.4	-1.0
	2007	100.00	77,595	-1.8	3,160.3	-1.6
	2008	100.00	78,198	+0.8	3,193.8	+1.1
	2009	100.00	72,072	-7.8	2,951.9	-7.6

Offenses reported in suburban Cook County account for 16.9% of the state crime index offense total.

Collar Counties Crime Index Offenses 2005-2009

INDEX OFFENSE	YEAR	% OF TOTAL	NUMBER OF OFFENSES	% VOLUME CHANGE	CRIME RATE PER 100,000	% RATE CHANGE
Murder	2005	0.09	62	-7.5	2.1	-8.7
	2006	0.07	46	-25.8	1.5	-28.6
	2007	0.09	59	+28.3	1.9	+26.7
	2008	0.06	39	-33.9	1.2	-36.8
	2009	0.09	58	+48.7	1.8	+50.0
Criminal Sexual Assault	2005	1.17	826	-1.2	27.5	-3.2
	2006	1.24	866	+4.8	28.3	+2.9
	2007	1.23	834	-3.7	26.7	-5.7
	2008	1.29	847	+1.6	27.1	+1.5
	2009	1.22	770	-9.1	24.4	-10.0
Robbery	2005	1.77	1,247	+7.7	41.5	+5.3
	2006	1.87	1,302	+4.4	42.5	+2.4
	2007	1.87	1,267	-2.7	40.6	-4.5
	2008	1.75	1,150	-9.2	36.7	-9.6
	2009	1.73	1,090	-5.2	34.6	-5.7
Agg. Asslt./Batt., Att. Murder & Ritual Mutilation	2005	5.16	3,631	+5.1	120.9	+2.9
	2006	5.38	3,752	+3.3	122.6	+1.4
	2007	5.66	3,838	+2.3	123.0	+0.3
	2008	5.36	3,524	-8.2	112.6	-8.5
	2009	5.37	3,382	-4.0	107.4	-4.6
Violent Crimes Subtotal	2005	8.20	5,766	+4.5	191.9	+2.3
	2006	8.69	6,066	+5.2	198.2	+3.3
	2007	8.85	5,998	-1.1	192.2	-3.0
	2008	8.45	5,560	-7.3	177.6	-7.6
	2009	8.42	5,300	-4.7	168.2	-5.3
Burglary	2005	13.62	9,578	+0.5	318.8	-1.6
	2006	14.31	9,988	+4.3	326.3	+2.4
	2007	14.42	9,780	-2.1	313.5	-3.9
	2008	15.31	10,069	+3.0	321.7	+2.6
	2009	14.82	9,329	-7.3	296.1	-8.0
Theft	2005	73.37	51,597	+1.0	1,717.4	-1.2
	2006	72.68	50,731	-1.7	1,657.5	-3.5
	2007	72.25	48,996	-3.4	1,570.3	-5.3
	2008	72.30	47,566	-2.9	1,519.7	-3.2
	2009	73.15	46,049	-3.2	1,461.7	-3.8
Motor Vehicle Theft	2005	4.15	2,918	-5.7	97.1	-7.8
	2006	3.92	2,736	-6.2	89.4	-7.9
	2007	3.91	2,650	-3.1	84.9	-5.0
	2008	3.46	2,279	-14.0	72.8	-14.3
	2009	3.15	1,985	-12.9	63.0	-13.5
Arson	2005	0.66	467	-2.9	15.5	-5.5
	2006	0.55	381	-18.4	12.4	-20.0
	2007	0.57	388	+1.8	12.4	0.0
	2008	0.48	314	-19.1	10.0	-19.4
	2009	0.46	287	-8.6	9.1	-9.0
Property Crimes Subtotal	2005	91.80	64,560	+0.6	2,148.9	-1.6
	2006	91.45	63,836	-1.1	2,085.7	-2.9
	2007	91.15	61,814	-3.2	1,981.2	-5.0
	2008	91.55	60,228	-2.6	1,924.2	-2.9
	2009	91.58	57,650	-4.3	1,830.0	-4.9
Crime Index Total	2005	100.00	70,326	+0.9	2,340.8	-1.3
	2006	100.00	69,802	-0.7	2,280.6	-2.6
	2007	100.00	67,812	-2.9	2,173.4	-4.7
	2008	100.00	65,788	-3.0	2,101.9	-3.3
	2009	100.00	62,950	-4.3	1,998.2	-4.9

Offenses reported in the collar counties account for 14.8% of the state crime index offense total.

Urban Counties Crime Index Offenses 2005-2009

INDEX OFFENSE	YEAR	% OF TOTAL	NUMBER OF OFFENSES	% VOLUME CHANGE	CRIME RATE PER 100,000	% RATE CHANGE
Murder	2005	0.13	143	+19.2	5.3	+17.8
	2006	0.12	131	-8.4	4.8	-9.4
	2007	0.13	157	+19.8	5.1	+6.3
	2008	0.13	145	-7.6	5.0	-2.0
	2009	0.12	131	-9.7	4.5	-10.0
Criminal Sexual Assault	2005	1.67	1,852	+2.9	68.7	+2.1
	2006	1.51	1,659	-10.4	61.1	-11.1
	2007	1.60	1,878	+13.2	61.6	+0.8
	2008	1.64	1,864	-0.7	64.0	+3.9
	2009	1.72	1,822	-2.3	62.1	-3.0
Robbery	2005	2.67	2,952	+8.2	109.6	+7.5
	2006	2.95	3,243	+9.9	119.4	+8.9
	2007	2.87	3,378	+4.2	110.8	-7.2
	2008	2.87	3,258	-3.6	111.9	+1.0
	2009	2.95	3,127	-4.0	106.6	-4.7
Agg. Asslt./Batt., Att. Murder & Ritual Mutilation	2005	10.31	11,416	+2.2	423.7	+1.4
	2006	10.13	11,140	-2.4	410.3	-3.2
	2007	10.72	12,615	+13.2	413.7	+0.8
	2008	10.63	12,043	-4.5	413.5	0.0
	2009	10.71	11,340	-5.8	386.7	-6.5
Violent Crimes Subtotal	2005	14.78	16,363	+3.5	607.4	+2.7
	2006	14.71	16,173	-1.2	595.6	-1.9
	2007	15.32	18,028	+11.5	591.3	-0.7
	2008	15.27	17,310	-4.0	594.4	+0.5
	2009	15.51	16,420	-5.1	559.9	-5.8
Burglary	2005	19.53	21,630	+1.8	802.9	+1.0
	2006	20.48	22,519	+4.1	829.3	+3.3
	2007	19.53	22,983	+2.1	753.8	-9.1
	2008	20.98	23,776	+3.5	816.4	+8.3
	2009	21.62	22,893	-3.7	780.6	-4.4
Theft	2005	59.64	66,041	+0.1	2,451.3	-0.7
	2006	59.01	64,886	-1.7	2,389.6	-2.5
	2007	59.44	69,948	+7.8	2,294.1	-4.0
	2008	58.53	66,328	-5.2	2,277.5	-0.7
	2009	58.24	61,667	-7.0	2,102.8	-7.7
Motor Vehicle Theft	2005	5.45	6,034	-2.4	224.0	-3.2
	2006	5.21	5,727	-5.1	210.9	-5.8
	2007	5.07	5,971	+4.3	195.8	-7.2
	2008	4.63	5,245	-12.2	180.1	-8.0
	2009	4.01	4,250	-19.0	144.9	-19.5
Arson	2005	0.60	668	+14.8	24.8	+13.8
	2006	0.60	660	-1.2	24.3	-2.0
	2007	0.63	744	+12.7	24.4	+0.4
	2008	0.59	664	-10.8	22.8	-6.6
	2009	0.61	651	-2.0	22.2	-2.6
Property Crimes Subtotal	2005	85.22	94,373	+0.4	3,502.9	-0.4
	2006	85.29	93,792	-0.6	3,454.1	-1.4
	2007	84.68	99,646	+6.2	3,268.1	-5.4
	2008	84.73	96,013	-3.6	3,296.8	+0.9
	2009	84.49	89,461	-6.8	3,050.6	-7.5
Crime Index Total	2005	100.00	110,736	+0.9	4,110.3	+0.1
	2006	100.00	109,965	-0.7	4,049.7	-1.5
	2007	100.00	117,674	+7.0	3,859.4	-4.7
	2008	100.00	113,323	-3.7	3,891.2	+0.8
	2009	100.00	105,881	-6.6	3,610.5	-7.2

Offenses reported in urban counties account for 24.8% of the state crime index offense total.

Rural Counties Crime Index Offenses 2005-2009

INDEX OFFENSE	YEAR	% OF TOTAL	NUMBER OF OFFENSES	% VOLUME CHANGE	CRIME RATE PER 100,000	% RATE CHANGE
Murder	2005	0.03	15	-60.5	0.9	-60.9
	2006	0.07	30	+100.0	1.8	+100.0
	2007	0.04	13	-56.7	0.9	-50.0
	2008	0.07	21	+61.5	1.4	+55.6
	2009	0.10	29	+38.1	1.9	+35.7
Criminal Sexual Assault	2005	2.05	922	+11.1	54.6	+11.0
	2006	1.97	873	-5.3	51.9	-4.9
	2007	1.93	612	-29.9	44.5	-14.3
	2008	2.18	703	+14.9	46.1	+3.6
	2009	2.15	644	-8.4	42.3	-8.2
Robbery	2005	0.89	399	+11.1	23.6	+10.8
	2006	0.89	396	-0.8	23.5	-0.4
	2007	0.65	205	-48.2	14.9	-36.6
	2008	0.57	185	-9.8	12.1	-18.8
	2009	0.50	149	-19.5	9.8	-19.0
Agg. Asslt./Batt., Att. Murder & Ritual Mutilation	2005	10.75	4,841	+7.3	286.9	+7.4
	2006	11.14	4,931	+1.9	292.9	+2.1
	2007	11.46	3,627	-26.4	263.9	-9.9
	2008	10.82	3,482	-4.0	228.3	-13.5
	2009	11.41	3,423	-1.7	224.6	-1.6
Violent Crimes Subtotal	2005	13.72	6,177	+7.7	366.1	+7.7
	2006	14.07	6,230	+0.9	370.0	+1.1
	2007	14.08	4,457	-28.5	324.3	-12.4
	2008	13.65	4,391	-1.5	287.9	-11.2
	2009	14.15	4,245	-3.3	278.5	-3.3
Burglary	2005	20.45	9,211	+0.1	545.9	+0.2
	2006	20.42	9,038	-1.9	536.8	-1.7
	2007	19.70	6,234	-31.0	453.6	-15.5
	2008	20.08	6,462	+3.7	423.7	-6.6
	2009	20.69	6,208	-3.9	407.4	-3.8
Theft	2005	61.78	27,823	-0.8	1,648.9	-0.7
	2006	61.82	27,368	-1.6	1,625.6	-1.4
	2007	62.72	19,847	-27.5	1,444.2	-11.2
	2008	63.08	20,297	+2.3	1,330.8	-7.9
	2009	61.96	18,590	-8.4	1,219.8	-8.3
Motor Vehicle Theft	2005	3.42	1,540	-0.7	91.3	-0.7
	2006	3.18	1,409	-8.5	83.7	-8.3
	2007	2.91	920	-34.7	66.9	-20.1
	2008	2.61	840	-8.7	55.1	-17.6
	2009	2.62	785	-6.5	51.5	-6.5
Arson	2005	0.63	283	+12.3	16.8	+12.8
	2006	0.51	224	-20.8	13.3	-20.8
	2007	0.59	188	-16.1	13.7	+3.0
	2008	0.57	185	-1.6	12.1	-11.7
	2009	0.59	177	-4.3	11.6	-4.1
Property Crimes Subtotal	2005	86.28	38,857	-0.5	2,302.8	-0.4
	2006	85.93	38,039	-2.1	2,259.4	-1.9
	2007	85.92	27,189	-28.5	1,978.5	-12.4
	2008	86.35	27,784	+2.2	1,821.8	-7.9
	2009	85.85	25,760	-7.3	1,690.3	-7.2
Crime Index Total	2005	100.00	45,034	+0.6	2,668.8	+0.6
	2006	100.00	44,269	-1.7	2,629.5	-1.5
	2007	100.00	31,646	-28.5	2,302.8	-12.4
	2008	100.00	32,175	+1.7	2,109.7	-8.4
	2009	100.00	30,005	-6.7	1,968.8	-6.7

Offenses reported in rural counties account for 7.0% of the state crime index offense total.