

SECTION I - CRIME TRENDS

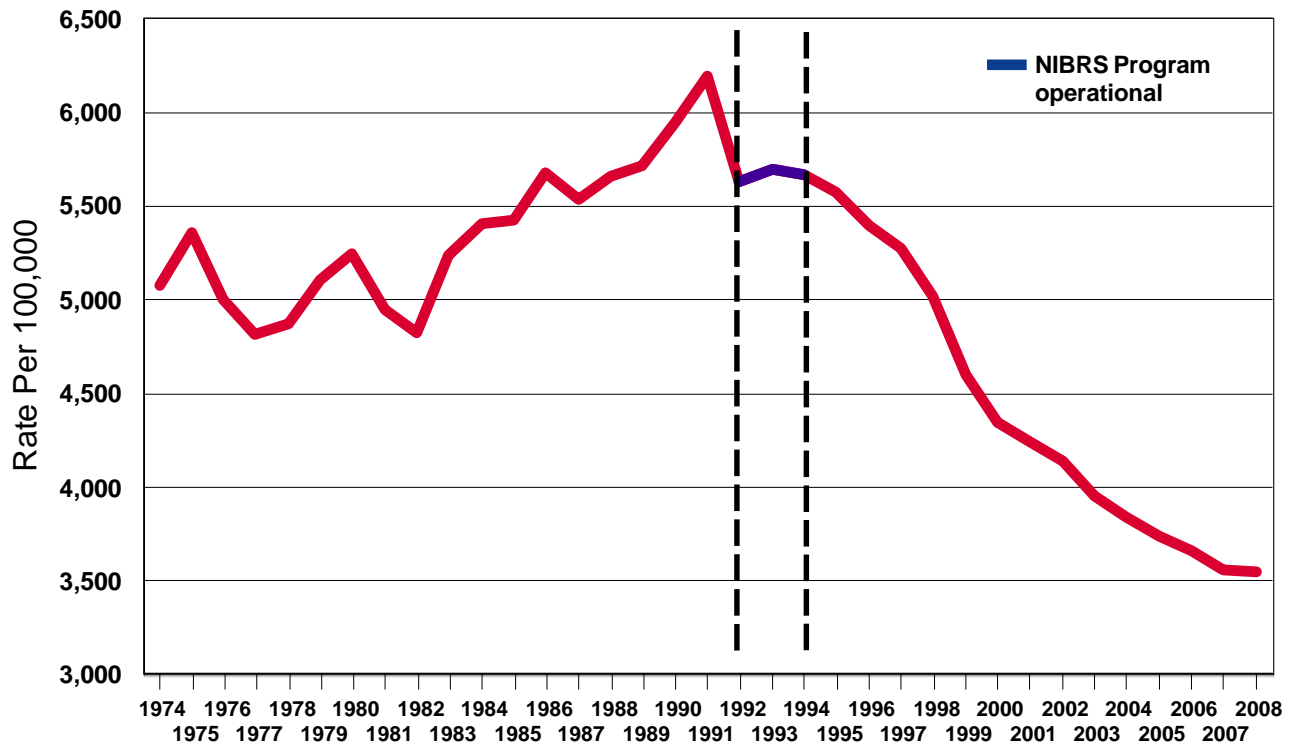
Crime Trends - A Historical Perspective

Historical information is intended to provide a comprehensive perspective of crime trends. The graph below illustrates the general trend of crimes reported in Illinois from 1974 to 2008. The Crime Index is composed of selected offenses used to gauge fluctuations in the overall volume and rate of crime reported to law enforcement. Offenses selected are violent crimes against persons including murder, criminal sexual assault, robbery, and aggravated assault/battery (including attempted murder and ritual mutilation); and crimes against property including burglary, theft (including burglary from a motor vehicle), motor vehicle theft, and arson.

Crime trends may be analyzed using two separate methods: crime volume and crime rates. Crime volume is merely the aggregate total of the Crime Index. By comparing the crime volume from year to year, trends in the number and types of crimes reported to police can be studied. Crime rates are compiled to compensate for the changes in the size of population. Crime rates are generally expressed as the total number of index crimes per 100,000 inhabitants.

The crime rate for the state of Illinois is shown for each year from 1974 through 2008. The term “rate” refers to the number of crimes per 100,000 inhabitants. The crime rate is calculated by dividing the number of crimes reported to police by the jurisdictional population, and multiplying that number by 100,000.

Illinois Crime Index Offense Rate 1974-2008



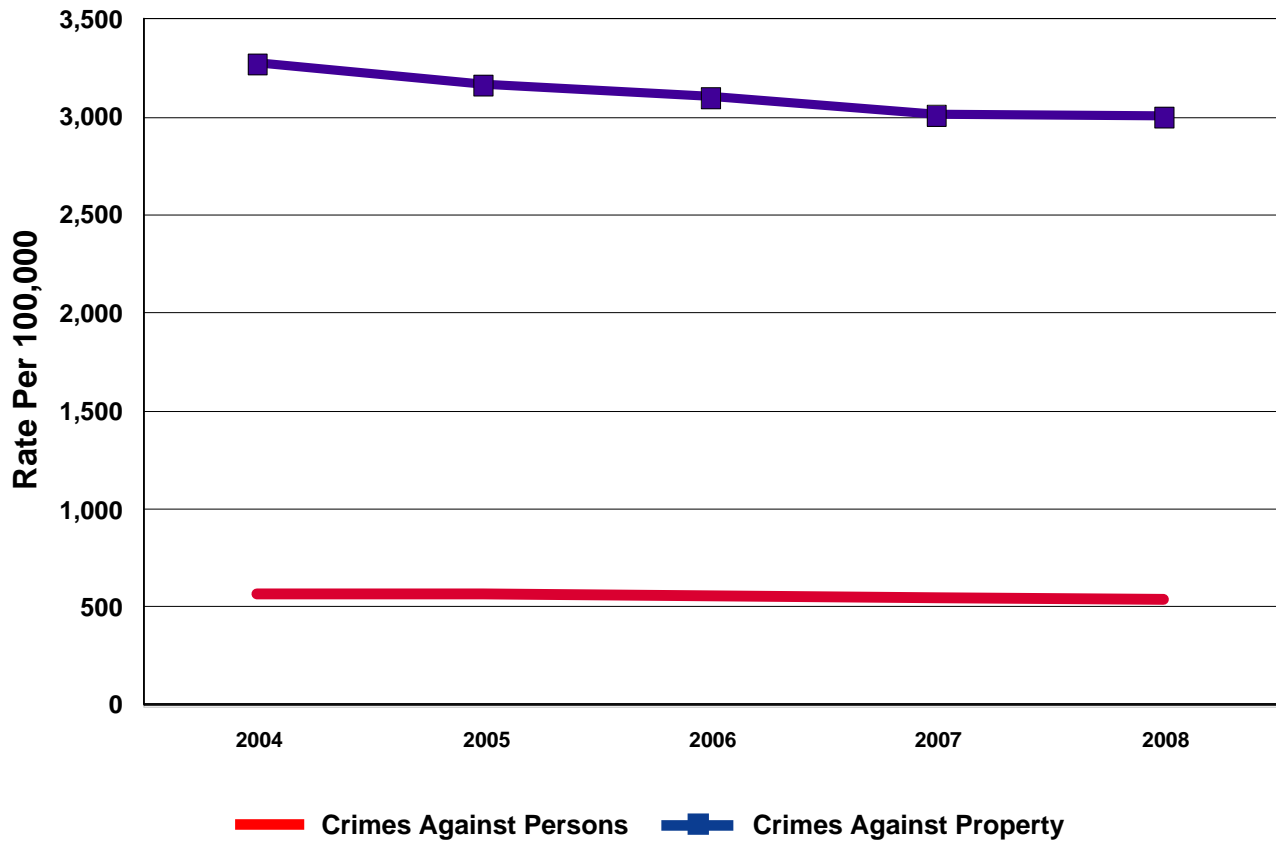
Considerations for interpretation:

On January 1, 1992, the Revised Illinois Uniform Crime Reporting Program, operating under the Federal Bureau of Investigation's National Incident Based Reporting System (NIBRS) criteria, became operational. This new system was used to collect data from 1992 through 1993. In 1994 the Illinois State Police implemented a new reporting procedure. Data was captured and provided to the Illinois State Police on a Monthly Crime Index Form ISP 2-423 (7/08). Crime index offenses, crime index offense arrests, and drug crime arrests were required to be reported by local law enforcement agencies. This procedure is still in use to date; however, the change in reporting procedures in the early 1990s may have contributed to the decrease in Index offense rates from 1991-1993.

Effective July 1, 1984, sex crimes committed in Illinois were governed by a new statute entitled "Illinois Criminal Sexual Assault Act" (Chapter 720 ILCS 5/12-13,14). This statute repealed eight existing laws in Illinois including rape. On July 1, 1984, law enforcement agencies began reporting the new sex offenses to the I-UCR Program. The criminal sexual assault category reflects offenses reported as rape from 1972 through June 30, 1984. After July 1, 1984, offenses were reported as aggravated criminal sexual assault and criminal sexual assault.

Crime Trends - A Historical Perspective

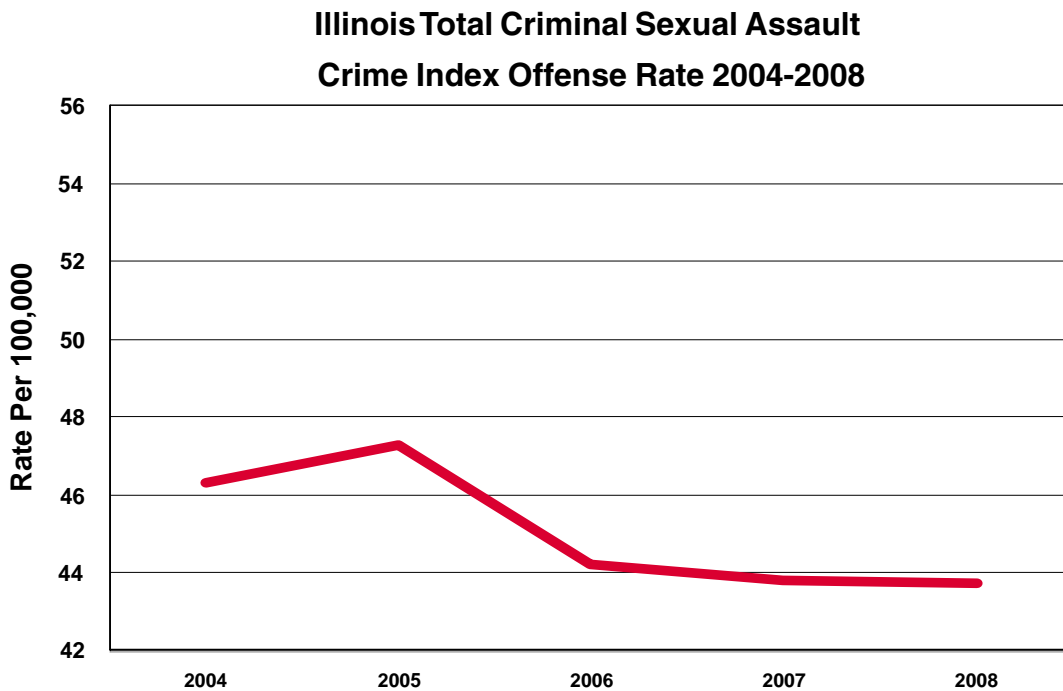
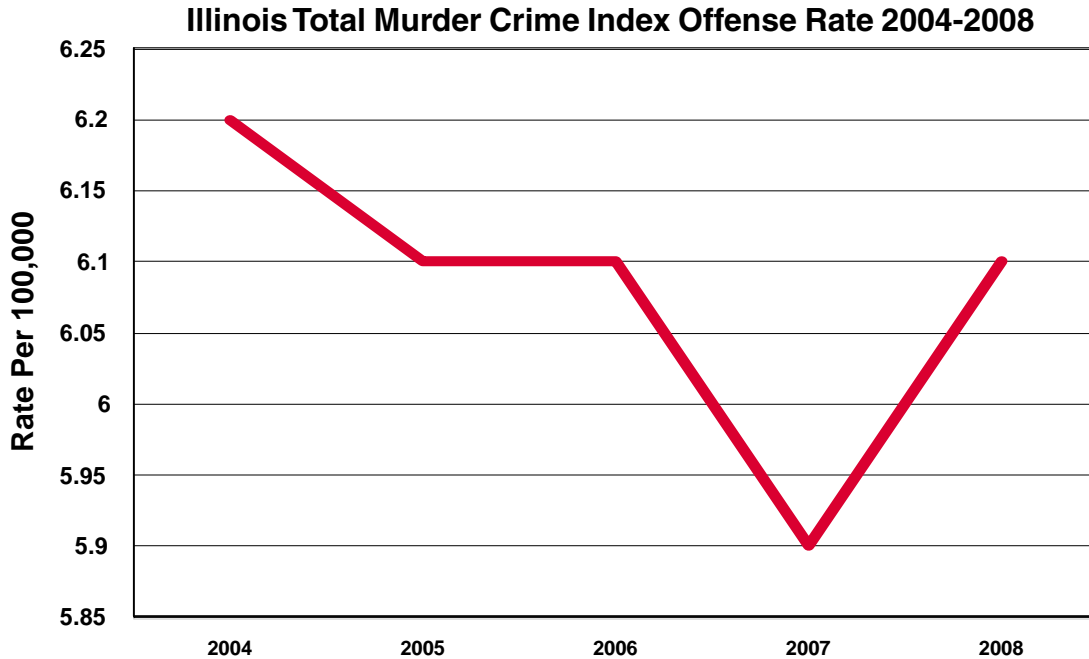
Violent crimes against persons offenses include murder, criminal sexual assault, robbery, and aggravated assault/battery (including attempted murder and ritual mutilation). Violent crimes against persons accounted for 15.2 percent of the crime index total in 2008. Crimes against property offenses include burglary, theft (including burglary from a motor vehicle), motor vehicle theft, and arson. Crimes against property accounted for 84.8 percent of the crime index total in 2008.



Note: See page 18 for the actual crime index offense rates and total number of offenses reported in each category for 2004-2008.

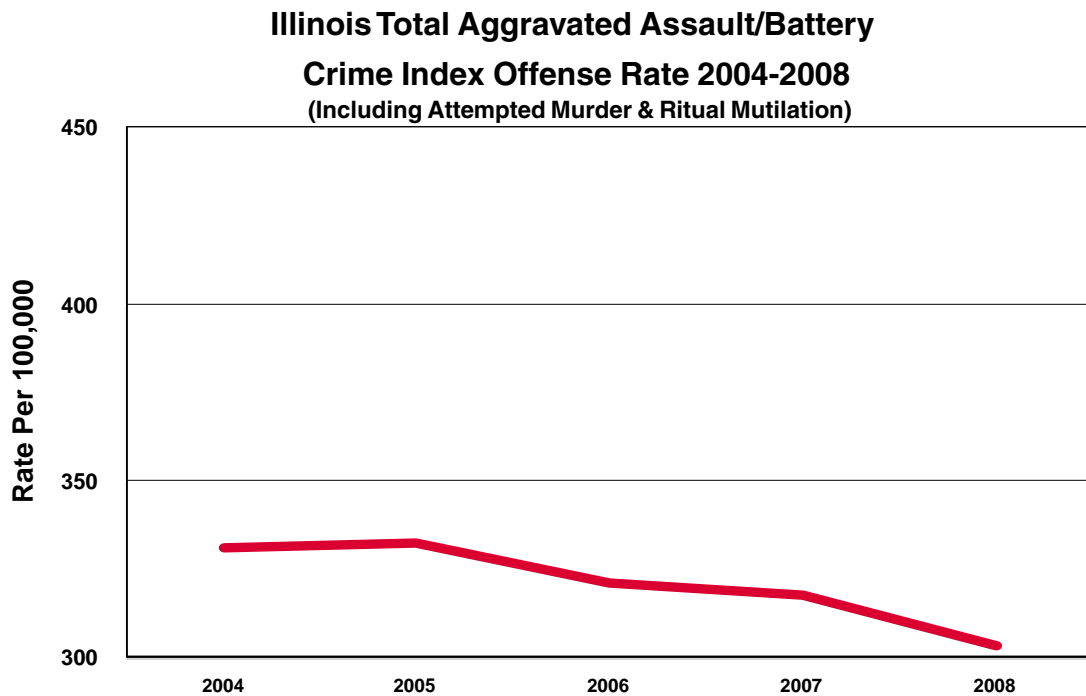
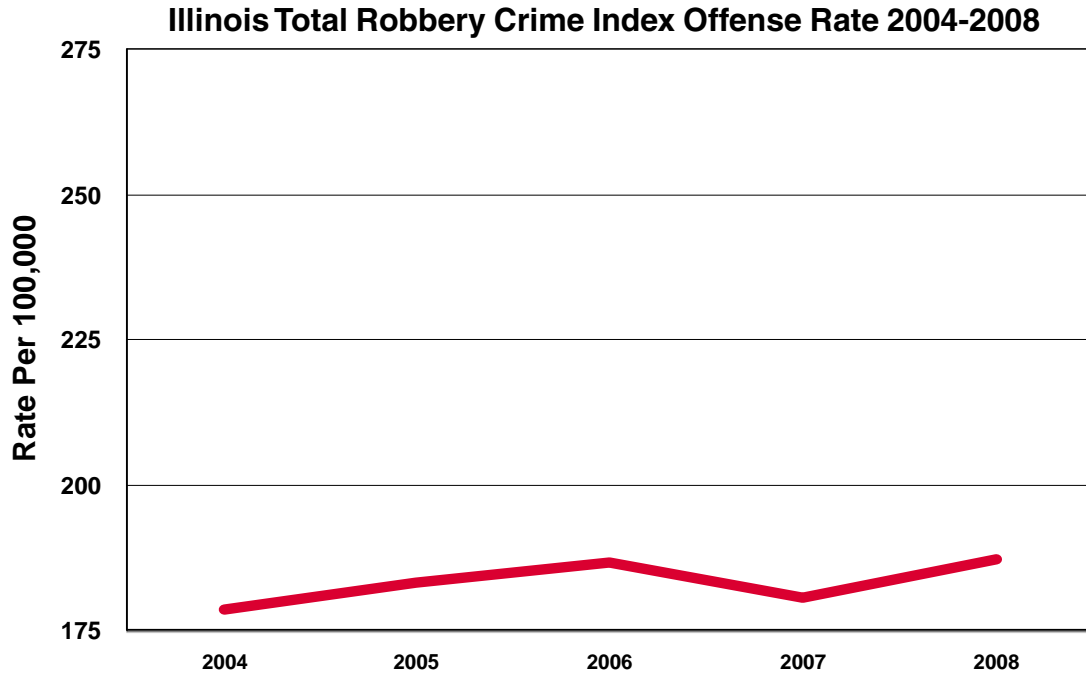
Crime Trends - A Historical Perspective

In the category of violent crimes against persons, crime index offense rates decreased for criminal sexual assault and aggravated assault/battery in 2008, but increased for murder and robbery. Murder and criminal sexual assault remain the smallest percentage of the overall violent crimes against persons crime index offense total.



Note: See page 18 for the actual crime index offense rates and total number of offenses reported in each category for 2004-2008.

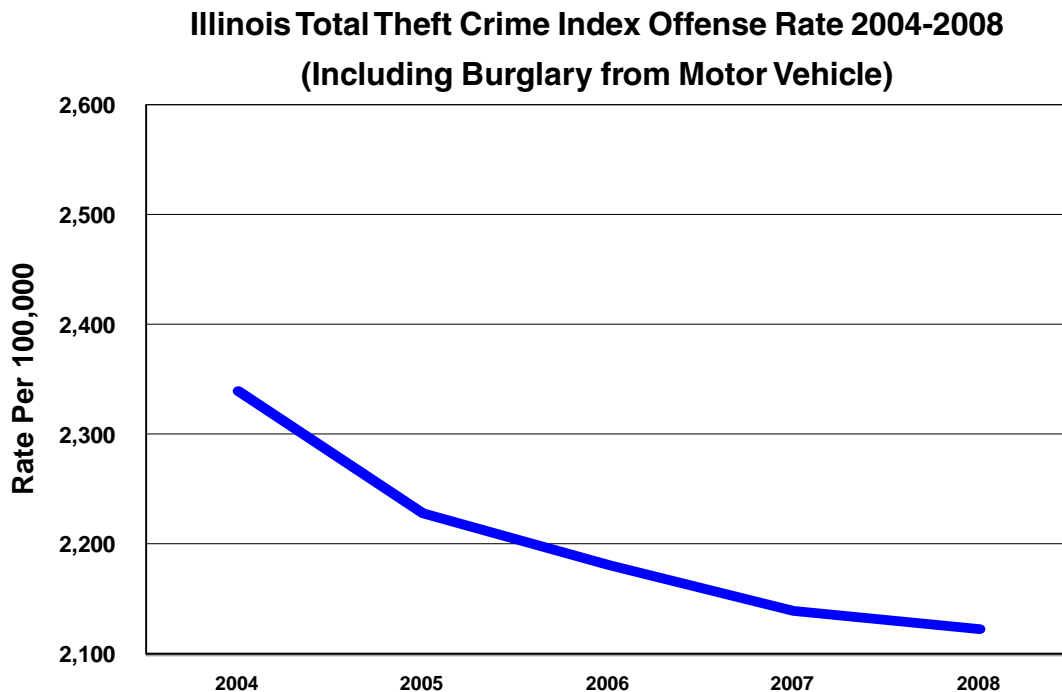
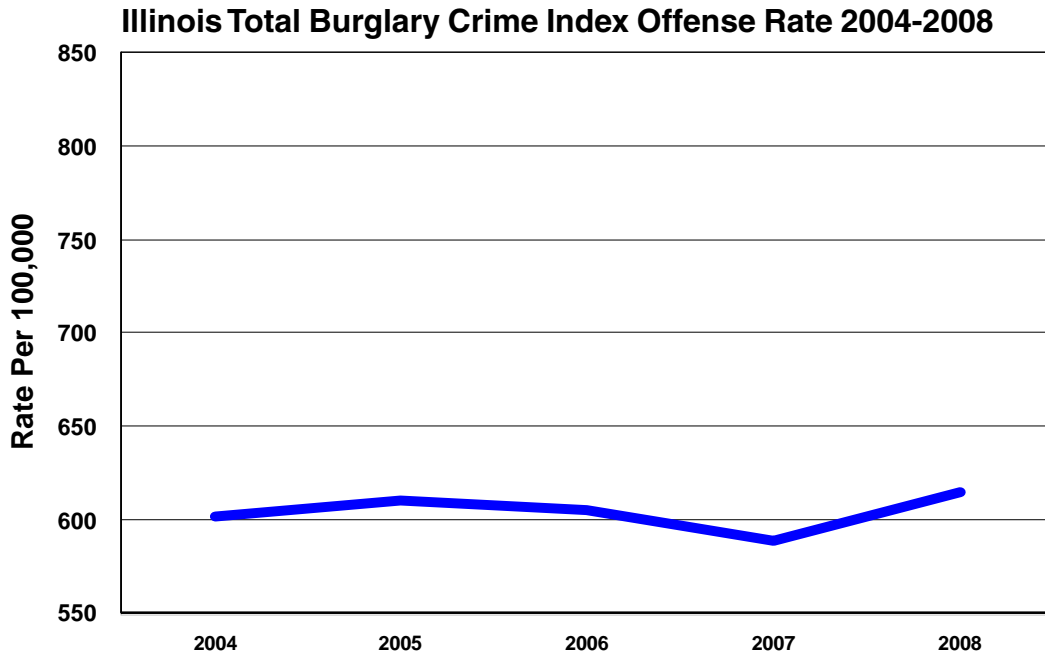
Crime Trends - A Historical Perspective



Note: See page 18 for the actual crime index offense rates and total number of offenses reported in each category for 2004-2008.

Crime Trends - A Historical Perspective

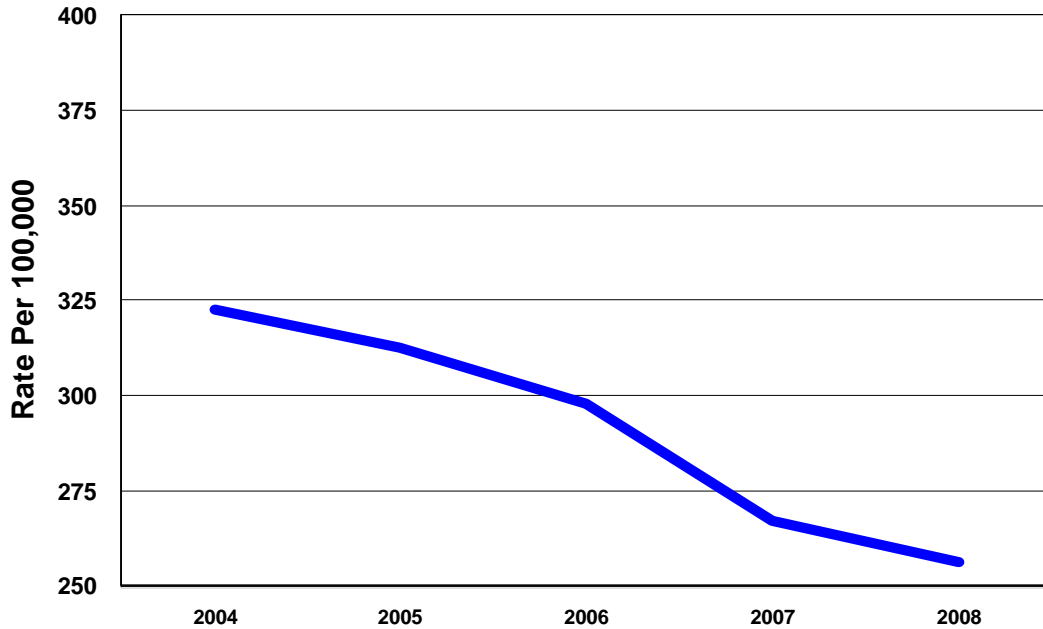
With the exception of burglary, crimes against property crime index offense rates declined in 2008. Arson and motor vehicle theft remain the smallest percentage of the overall crimes against property crime index offense total.



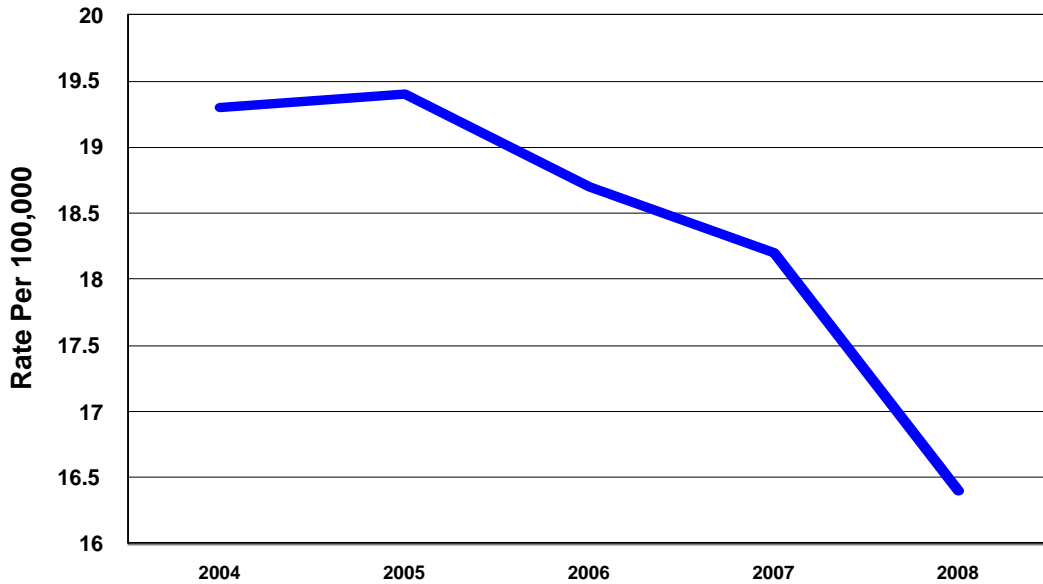
Note: See page 18 for the actual crime index offense rates and total number of offenses reported in each category for 2004-2008.

Crime Trends - A Historical Perspective

**Illinois Total Motor Vehicle Theft
Crime Index Offense Rate 2004-2008**



Illinois Total Arson Crime Index Offense Rate 2004-2008



Note: See page 18 for the actual crime index offense rates and total number of offenses reported in each category for 2004-2008.

Crime Trends - Violent Crimes/Property Crimes

Tables defined below provide comparisons of offense totals and rates among both independent and grouped jurisdictions of interest.

State Total - Statewide offense totals.

State Total Minus Chicago Police Department (CPD) - Statewide offense totals minus Chicago Police Department offense totals.

Chicago Police Department Total - Chicago Police Department offense totals.

Cook County Total - Cook County offense totals including Chicago Police Department offense totals.

Suburban Cook County Total - Cook County offense totals minus Chicago Police Department offense totals.

Collar Counties Total - Offense totals reported by sheriffs' offices, police departments, colleges, and universities located in DuPage, Kane, Lake, McHenry, and Will Counties.

Urban Counties Total - Offense totals reported by sheriffs' offices, police departments, colleges, and universities located in the following counties:

Adams	Clinton	Jackson	Macon	Mercer	Rock Island	Vermilion
Bond	Coles	Jersey	Madison	Monroe	Sangamon	Whiteside
Boone	DeKalb	Kankakee	Marshall	Ogle	St. Clair	Williamson
Calhoun	Ford	Kendall	McLean	Peoria	Stark	Winnebago
Champaign	Grundy	Knox	Menard	Piatt	Tazewell	Woodford

Rural Counties Total - Offense totals reported by sheriffs' offices, police departments, colleges, and universities located in the following counties:

Alexander	Cumberland	Gallatin	Jefferson	Marion	Pope	Stephenson
Brown	DeWitt	Greene	JoDaviess	Mason	Pulaski	Union
Bureau	Douglas	Hamilton	Johnson	Massac	Putnam	Wabash
Carroll	Edgar	Hancock	LaSalle	McDonough	Randolph	Warren
Cass	Edwards	Hardin	Lawrence	Montgomery	Richland	Washington
Christian	Effingham	Henderson	Lee	Morgan	Saline	Wayne
Clark	Fayette	Henry	Livingston	Moultrie	Schuyler	White
Clay	Franklin	Iroquois	Logan	Perry	Scott	
Crawford	Fulton	Jasper	Macoupin	Pike	Shelby	

Counties are considered urban if their population consists of at least 50,000 residents or if they contribute at least 50,000 residents to a total Metropolitan Statistical Area (MSA) of 100,000. An area qualifies for recognition as an MSA in one of two ways: (1) if it includes a city of at least 50,000 population, or (2) if it includes an urbanized area of at least 50,000 population with a total metropolitan population of 100,000. The MSA comprises the central county or counties containing the core, plus adjacent outlying counties having a high degree of social and economical integration with the central county as measured through commuting ties. Those that are not part of an MSA are classified as rural counties.

State Total Crime Index Offenses 2004-2008

INDEX OFFENSE	YEAR	% OF TOTAL	NUMBER OF OFFENSES	% VOLUME CHANGE	CRIME RATE PER 100,000	% RATE CHANGE
Murder	2004	0.16	780	-12.8	6.2	-12.7
	2005	0.16	770	-1.3	6.1	-1.6
	2006	0.17	786	+2.1	6.2	+1.6
	2007	0.16	751	-4.5	5.9	-4.8
	2008	0.17	790	+5.2	6.1	+3.4
Criminal Sexual Assault	2004	1.21	5,862	+0.2	46.3	-0.4
	2005	1.27	6,017	+2.6	47.3	+2.2
	2006	1.22	5,729	-4.8	44.9	-5.1
	2007	1.23	5,625	-1.8	43.8	-2.4
	2008	1.23	5,620	-0.1	43.7	-0.2
Robbery	2004	4.65	22,611	-5.0	178.7	-5.5
	2005	4.90	23,283	+3.0	183.1	+2.5
	2006	5.09	23,941	+2.8	187.6	+2.5
	2007	5.07	23,161	-3.3	180.5	-3.8
	2008	5.28	24,079	+4.0	187.3	+3.8
Aggravated Assault, Aggravated Battery, Attempted Murder & Ritual Mutilation	2004	8.61	41,889	+0.7	331.0	+0.1
	2005	8.89	42,278	+0.9	332.5	+0.5
	2006	8.76	41,222	-2.5	323.0	-2.9
	2007	8.92	40,772	-1.1	317.7	-1.6
	2008	8.54	38,952	-4.5	303.1	-4.6
Violent Crimes Against Persons Subtotal	2004	14.62	71,142	-1.4	562.2	-2.0
	2005	15.22	72,348	+1.7	569.1	+1.2
	2006	15.23	71,678	-0.9	561.6	-1.3
	2007	15.38	70,309	-1.9	547.9	-2.4
	2008	15.22	69,441	-1.2	540.3	-1.4
Burglary	2004	15.64	76,088	-2.9	601.3	-3.4
	2005	16.33	77,635	+2.0	610.6	+1.5
	2006	16.52	77,749	+0.1	609.2	-0.2
	2007	16.53	75,552	-2.8	588.8	-3.3
	2008	17.30	78,968	+4.5	614.4	+4.3
Theft	2004	60.85	295,996	-2.1	2,339.2	-2.6
	2005	59.58	283,312	-4.3	2,228.4	-4.7
	2006	59.70	281,018	-0.8	2,201.8	-1.2
	2007	60.08	274,602	-2.3	2,140.0	-2.8
	2008	59.80	272,916	-0.6	2,123.4	-0.8
Motor Vehicle Theft	2004	8.39	40,796	-3.0	322.4	-3.5
	2005	8.36	39,739	-2.6	312.6	-3.0
	2006	8.05	37,900	-4.6	296.9	-5.0
	2007	7.50	34,270	-9.6	267.1	-10.0
	2008	7.21	32,925	-3.9	256.2	-4.1
Arson	2004	0.50	2,447	-14.1	19.3	-14.6
	2005	0.52	2,463	+0.7	19.4	+0.5
	2006	0.51	2,385	-3.2	18.7	-3.6
	2007	0.51	2,338	-2.0	18.2	-2.7
	2008	0.46	2,109	-9.8	16.4	-9.9
Crimes Against Property Subtotal	2004	85.38	415,327	-2.4	3,282.3	-2.9
	2005	84.78	403,149	-2.9	3,171.0	-3.4
	2006	84.77	399,052	-1.0	3,126.5	-1.4
	2007	84.62	386,762	-3.1	3,014.1	-3.6
	2008	84.78	386,918	0.0	3,010.4	-0.1
Crimes Index Total	2004	100.00	486,469	-2.3	3,844.5	-2.8
	2005	100.00	475,497	-2.3	3,740.1	-2.7
	2006	100.00	470,730	-1.0	3,688.1	-1.4
	2007	100.00	457,071	-2.9	3,562.0	-3.4
	2008	100.00	456,359	-0.2	3,550.7	-0.3

State Total Minus CPD Illinois Crime Index Offenses 2004-2008

INDEX OFFENSE	YEAR	% OF TOTAL	NUMBER OF OFFENSES	% VOLUME CHANGE	CRIME RATE PER 100,000	% RATE CHANGE
Murder	2004	0.11	332	+11.8	3.4	+9.7
	2005	0.10	320	-3.6	3.2	-5.9
	2006	0.10	315	-1.6	3.2	0.0
	2007	0.10	309	-1.9	3.1	-3.1
	2008	0.10	280	-9.4	2.8	-9.7
Criminal Sexual Assault	2004	1.34	4,105	+1.3	42.0	+0.5
	2005	1.41	4,322	+5.3	43.9	+4.5
	2006	1.37	4,142	-4.2	41.8	-4.8
	2007	1.36	4,003	-3.4	40.0	-4.3
	2008	1.40	4,051	+1.2	40.4	+1.0
Robbery	2004	2.17	6,646	+2.1	67.9	+1.2
	2005	2.37	7,253	+9.1	73.6	+8.4
	2006	2.64	7,988	+10.1	80.5	+9.4
	2007	2.62	7,723	-3.3	77.2	-4.1
	2008	2.57	7,427	-3.8	74.2	-3.9
Aggravated Assault, Aggravated Battery, Attempted Murder & Ritual Mutilation	2004	7.52	23,069	+5.7	235.8	+4.8
	2005	7.92	24,245	+5.1	246.1	+4.4
	2006	7.80	23,643	-2.5	238.3	-3.2
	2007	7.90	23,305	-1.4	233.1	-2.2
	2008	7.59	21,919	-5.9	218.8	-6.1
Violent Crimes Against Persons Subtotal	2004	11.13	34,152	+4.5	349.0	+3.6
	2005	11.81	36,140	+5.8	366.9	+5.1
	2006	11.91	36,088	-0.1	363.8	-0.8
	2007	11.99	35,340	-2.1	353.4	-2.9
	2008	11.66	33,676	-4.7	336.2	-4.9
Burglary	2004	16.81	51,546	-3.3	526.8	-4.1
	2005	17.10	52,337	+1.5	531.3	+0.9
	2006	17.63	53,438	+2.1	538.6	+1.4
	2007	17.23	50,805	-4.9	508.1	-5.7
	2008	18.32	52,932	+4.2	528.5	+4.0
Theft	2004	65.64	201,345	-2.1	2,057.8	-2.9
	2005	65.37	200,077	-0.6	2,031.0	-1.3
	2006	64.60	195,786	-2.1	1,973.5	-2.8
	2007	64.90	191,322	-2.3	1,913.5	-3.0
	2008	64.69	186,899	-2.3	1,866.0	-2.5
Motor Vehicle Theft	2004	5.87	18,008	-6.6	184.0	-7.4
	2005	5.64	17,248	-4.2	175.1	-4.8
	2006	5.31	16,102	-6.6	162.3	-7.3
	2007	5.33	15,714	-2.4	157.2	-3.1
	2008	4.83	13,952	-11.2	139.3	-11.4
Arson	2004	0.55	1,675	-11.9	17.1	-12.8
	2005	0.58	1,780	+6.3	18.1	+5.8
	2006	0.55	1,673	-6.0	16.9	-6.6
	2007	0.55	1,633	-2.4	16.3	-3.6
	2008	0.51	1,472	-9.9	14.7	-9.8
Crimes Against Property Subtotal	2004	88.86	272,571	-2.7	2,785.8	-3.5
	2005	88.19	269,910	-1.0	2,739.8	-1.7
	2006	88.09	266,999	-1.1	2,691.3	-1.8
	2007	88.01	259,474	-2.8	2,595.1	-3.6
	2008	88.34	255,255	-1.6	2,548.5	-1.8
Crimes Index Total	2004	100.00	306,726	-1.9	3,134.8	-2.7
	2005	100.00	306,050	-0.2	3,106.7	-0.9
	2006	100.00	303,087	-1.0	3,055.0	-1.7
	2007	100.00	294,814	-2.7	2,948.5	-3.5
	2008	100.00	288,931	-2.0	2,884.7	-2.2

Offenses reported in the State total minus CPD area account for 63.3% of the state crime index offense total.

Chicago Police Department Crime Index Offenses 2004-2008

INDEX OFFENSE	YEAR	% OF TOTAL	NUMBER OF OFFENSES	% VOLUME CHANGE	CRIME RATE PER 100,000	% RATE CHANGE
Murder	2004	0.25	448	-25.1	15.6	-24.6
	2005	0.27	450	+0.4	15.7	+0.6
	2006	0.28	471	+4.7	16.6	+5.7
	2007	0.27	442	-6.2	15.6	-6.0
	2008	0.30	510	+15.4	18.0	+15.4
Criminal Sexual Assault	2004	0.98	1,757	-2.3	61.2	-1.9
	2005	1.00	1,695	-3.5	59.2	-3.3
	2006	0.95	1,587	-6.4	55.8	-5.7
	2007	1.01	1,644	+3.6	58.0	+3.9
	2008	0.94	1,569	-4.6	55.3	-4.7
Robbery	2004	8.88	15,965	-7.7	556.4	-7.3
	2005	9.46	16,030	+0.4	560.1	+0.7
	2006	9.52	15,953	-0.5	561.2	+0.2
	2007	9.51	15,432	-3.3	544.7	-2.9
	2008	9.95	16,652	+7.9	587.0	+7.8
Aggravated Assault, Aggravated Battery, Attempted Murder & Ritual Mutilation	2004	10.47	18,820	-4.9	656.0	-4.4
	2005	10.64	18,033	-4.2	630.0	-4.0
	2006	10.49	17,579	-2.5	618.4	-1.8
	2007	10.75	17,434	-0.8	615.3	-0.5
	2008	10.17	17,033	-2.3	600.5	-2.4
Violent Crimes Against Persons Subtotal	2004	20.58	36,990	-6.3	1,289.2	-5.9
	2005	21.37	36,208	-2.1	1,265.0	-1.9
	2006	21.23	35,590	-1.7	1,252.1	-1.0
	2007	21.55	34,952	-1.8	1,233.6	-1.5
	2008	21.36	35,764	+2.3	1,260.8	+2.2
Burglary	2004	13.65	24,542	-2.1	855.4	-1.6
	2005	14.93	25,298	+3.1	883.9	+3.3
	2006	14.50	24,311	-3.9	855.3	-3.2
	2007	15.26	24,754	+1.8	873.7	+2.2
	2008	15.55	26,036	+5.2	917.8	+5.0
Theft	2004	52.66	94,651	-2.2	3,299.0	-1.7
	2005	49.12	83,235	-12.1	2,908.0	-11.9
	2006	50.84	85,232	+2.4	2,998.5	+3.1
	2007	51.31	83,219	-2.4	2,937.2	-2.0
	2008	51.38	86,017	+3.4	3,032.3	+3.2
Motor Vehicle Theft	2004	12.68	22,788	0.0	794.3	+0.5
	2005	13.27	22,491	-1.3	785.8	-1.1
	2006	13.00	21,798	-3.1	766.9	-2.4
	2007	11.45	18,568	-14.8	655.3	-14.6
	2008	11.33	18,973	+2.2	668.9	+2.1
Arson	2004	0.43	772	-18.5	26.9	-18.2
	2005	0.40	683	-11.5	23.9	-11.2
	2006	0.42	712	+4.2	25.0	+4.6
	2007	0.43	704	-1.1	24.8	-0.8
	2008	0.38	637	-9.5	22.5	-9.3
Crimes Against Property Subtotal	2004	79.42	142,756	-1.9	4,975.6	-1.5
	2005	78.63	133,239	-6.7	4,655.1	-6.4
	2006	78.77	132,053	-0.9	4,645.6	-0.2
	2007	78.45	127,245	-3.6	4,491.0	-3.3
	2008	78.64	131,663	+3.5	4,641.5	+3.4
Crimes Index Total	2004	100.00	179,743	-2.9	6,264.7	-2.4
	2005	100.00	169,447	-5.7	5,920.1	-5.5
	2006	100.00	167,643	-1.1	5,897.7	-0.4
	2007	100.00	162,197	-3.2	5,724.6	-2.9
	2008	100.00	167,427	+3.2	5,902.3	+3.1

Offenses reported by the Chicago Police Department account for 36.7% of the state crime index offense total.

Cook County Crime Index Offenses 2004-2008

INDEX OFFENSE	YEAR	% OF TOTAL	NUMBER OF OFFENSES	% VOLUME CHANGE	CRIME RATE PER 100,000	% RATE CHANGE
Murder	2004	0.21	554	-20.3	10.4	-19.4
	2005	0.22	550	-0.7	10.3	-1.0
	2006	0.23	579	+5.3	10.9	+5.8
	2007	0.22	522	-9.8	9.9	-9.2
	2008	0.24	584	+11.9	11.0	+11.1
Criminal Sexual Assault	2004	0.91	2,397	-1.2	45.0	-0.4
	2005	0.97	2,417	+0.8	45.4	+0.9
	2006	0.95	2,331	-3.6	44.0	-3.1
	2007	0.96	2,300	-1.3	43.5	-1.1
	2008	0.90	2,208	-4.0	41.8	-3.9
Robbery	2004	7.01	18,365	-7.1	344.7	-6.4
	2005	7.49	18,685	+1.7	350.7	+1.7
	2006	7.70	19,000	+1.7	358.2	+2.1
	2007	7.63	18,307	-3.6	346.2	-3.4
	2008	7.94	19,501	+6.5	369.0	+6.6
Aggravated Assault, Aggravated Battery, Attempted Murder & Ritual Mutilation	2004	8.68	22,753	-3.5	427.1	-2.8
	2005	8.98	22,389	-1.6	420.2	-1.6
	2006	8.67	21,396	-4.4	403.4	-4.0
	2007	8.62	20,675	-3.4	390.9	-3.1
	2008	8.16	20,053	-3.0	379.4	-2.9
Violent Crimes Against Persons Subtotal	2004	16.81	44,069	-5.2	827.2	-4.4
	2005	17.66	44,041	-0.1	826.6	-0.1
	2006	17.56	43,306	-1.7	816.5	-1.2
	2007	17.43	41,804	-3.5	790.4	-3.2
	2008	17.24	42,346	+1.3	801.2	+1.4
Burglary	2004	13.78	36,111	-2.5	677.8	-1.8
	2005	14.92	37,216	+3.1	698.5	+3.1
	2006	14.68	36,204	-2.7	682.6	-2.3
	2007	15.23	36,526	+0.9	690.6	+1.2
	2008	15.80	38,809	+6.3	734.3	+6.3
Theft	2004	57.55	150,871	-2.1	2,831.8	-1.3
	2005	55.27	137,825	-8.6	2,586.9	-8.6
	2006	55.95	138,002	+0.1	2,602.0	+0.6
	2007	56.60	135,726	-1.6	2,566.4	-1.4
	2008	56.58	138,955	+2.4	2,629.2	+2.4
Motor Vehicle Theft	2004	11.43	29,959	-2.1	562.3	-1.4
	2005	11.73	29,245	-2.4	548.9	-2.4
	2006	11.36	28,025	-4.2	528.4	-3.7
	2007	10.31	24,719	-11.8	467.4	-11.5
	2008	10.00	24,554	-0.7	464.6	-0.6
Arson	2004	0.43	1,132	-17.6	21.2	-17.2
	2005	0.42	1,045	-7.7	19.6	-7.5
	2006	0.45	1,119	+7.1	21.1	+7.7
	2007	0.42	1,017	-9.1	19.2	-9.0
	2008	0.38	940	-7.6	17.8	-7.3
Crimes Against Property Subtotal	2004	83.19	218,073	-2.2	4,093.1	-1.5
	2005	82.34	205,331	-5.8	3,854.0	-5.8
	2006	82.44	203,350	-1.0	3,834.1	-0.5
	2007	82.57	197,988	-2.6	3,743.6	-2.4
	2008	82.76	203,258	+2.7	3,845.9	+2.7
Crimes Index Total	2004	100.00	262,142	-2.7	4,920.3	-2.0
	2005	100.00	249,372	-4.9	4,680.6	-4.9
	2006	100.00	246,656	-1.1	4,650.7	-0.6
	2007	100.00	239,792	-2.8	4,534.1	-2.5
	2008	100.00	245,604	+2.4	4,647.1	+2.5

Offenses reported in Cook County account for 53.8% of the state crime index offense total.

Suburban Cook County Crime Index Offenses 2004-2008

INDEX OFFENSE	YEAR	% OF TOTAL	NUMBER OF OFFENSES	% VOLUME CHANGE	CRIME RATE PER 100,000	% RATE CHANGE
Murder	2004	0.13	106	+9.3	4.3	+10.3
	2005	0.13	100	-5.7	4.1	-4.7
	2006	0.14	108	+8.0	4.4	+7.3
	2007	0.10	80	-25.9	3.3	-25.0
	2008	0.09	74	-7.5	3.0	-9.1
Criminal Sexual Assault	2004	0.78	640	+2.2	26.0	+3.2
	2005	0.90	722	+12.8	29.3	+12.7
	2006	0.94	744	+3.0	30.2	+3.1
	2007	0.85	656	-11.8	26.7	-11.6
	2008	0.82	639	-2.6	26.1	-2.2
Robbery	2004	2.91	2,400	-2.4	97.6	-1.4
	2005	3.32	2,655	+10.6	107.7	+10.3
	2006	3.86	3,047	+14.8	123.8	+14.9
	2007	3.71	2,875	-5.6	117.1	-5.4
	2008	3.64	2,849	-0.9	116.4	-0.6
Aggravated Assault, Aggravated Battery, Attempted Murder & Ritual Mutilation	2004	4.77	3,933	+3.5	160.0	+4.6
	2005	5.45	4,356	+10.8	176.7	+10.4
	2006	4.83	3,817	-12.4	155.1	-12.2
	2007	4.18	3,241	-15.1	132.0	-14.9
	2008	3.86	3,020	-6.8	123.3	-6.6
Violent Crimes Against Persons Subtotal	2004	8.59	7,079	+1.4	287.9	+2.5
	2005	9.80	7,833	+10.7	317.7	+10.4
	2006	9.77	7,716	-1.5	313.5	-1.3
	2007	8.83	6,852	-11.2	279.1	-11.0
	2008	8.42	6,582	-3.9	268.8	-3.7
Burglary	2004	14.04	11,569	-3.5	470.5	-2.4
	2005	14.91	11,918	+3.0	483.4	+2.7
	2006	15.05	11,893	-0.2	483.2	0.0
	2007	15.17	11,772	-1.0	479.4	-0.8
	2008	16.34	12,773	+8.5	521.7	+8.8
Theft	2004	68.23	56,220	-1.8	2,286.6	-0.8
	2005	68.30	54,590	-2.9	2,214.1	-3.2
	2006	66.79	52,770	-3.3	2,144.1	-3.2
	2007	67.67	52,507	-0.5	2,138.5	-0.3
	2008	67.72	52,938	+0.8	2,162.1	+1.1
Motor Vehicle Theft	2004	8.70	7,171	-8.3	291.7	-7.3
	2005	8.45	6,754	-5.8	273.9	-6.1
	2006	7.88	6,227	-7.8	253.0	-7.6
	2007	7.93	6,151	-1.2	250.5	-1.0
	2008	7.14	5,581	-9.3	227.9	-9.0
Arson	2004	0.44	360	-15.5	14.6	-14.6
	2005	0.45	362	+0.6	14.7	+0.7
	2006	0.52	407	+12.4	16.5	+12.2
	2007	0.40	313	-23.1	12.7	-23.0
	2008	0.39	303	-3.2	12.4	-2.4
Crimes Against Property Subtotal	2004	91.41	75,317	-2.8	3,063.3	-1.8
	2005	90.20	72,092	-4.3	2,924.0	-4.5
	2006	90.23	71,297	-1.1	2,896.9	-0.9
	2007	91.17	70,743	-0.8	2,881.2	-0.5
	2008	91.58	71,595	+1.2	2,924.1	+1.5
Crimes Index Total	2004	100.00	82,399	-2.5	3,351.4	-1.4
	2005	100.00	79,925	-3.0	3,241.7	-3.3
	2006	100.00	79,013	-1.1	3,210.4	-1.0
	2007	100.00	77,595	-1.8	3,160.3	-1.6
	2008	100.00	78,177	+0.8	3,192.9	+1.0

Offenses reported in suburban Cook County account for 17.1% of the state crime index offense total.

Collar Counties Crime Index Offenses 2004-2008

INDEX OFFENSE	YEAR	% OF TOTAL	NUMBER OF OFFENSES	% VOLUME CHANGE	CRIME RATE PER 100,000	% RATE CHANGE
Murder	2004	0.10	67	+6.3	2.3	+4.5
	2005	0.09	62	-7.5	2.1	-8.7
	2006	0.07	46	-25.8	1.5	-28.6
	2007	0.09	59	+28.3	1.9	+26.7
	2008	0.06	39	-33.9	1.2	-36.8
Criminal Sexual Assault	2004	1.20	836	+0.6	28.4	-1.7
	2005	1.17	826	-1.2	27.5	-3.2
	2006	1.24	866	+4.8	28.3	+2.9
	2007	1.23	834	-3.7	26.7	-5.7
	2008	1.28	844	+1.2	27.0	+1.1
Robbery	2004	1.66	1,158	-1.9	39.4	-4.1
	2005	1.77	1,247	+7.7	41.5	+5.3
	2006	1.87	1,302	+4.4	42.5	+2.4
	2007	1.87	1,267	-2.7	40.6	-4.5
	2008	1.75	1,150	-9.2	36.7	-9.6
Aggravated Assault, Aggravated Battery, Attempted Murder & Ritual Mutilation	2004	4.96	3,456	-1.5	117.5	-3.8
	2005	5.16	3,631	+5.1	120.9	+2.9
	2006	5.38	3,752	+3.3	122.6	+1.4
	2007	5.66	3,838	+2.3	123.0	+0.3
	2008	5.37	3,529	-8.1	112.7	-8.4
Violent Crimes Against Persons Subtotal	2004	7.91	5,517	-1.2	187.6	-3.4
	2005	8.20	5,766	+4.5	191.9	+2.3
	2006	8.69	6,066	+5.2	198.2	+3.3
	2007	8.85	5,998	-1.1	192.2	-3.0
	2008	8.46	5,562	-7.3	177.7	-7.5
Burglary	2004	13.67	9,530	+1.8	324.1	-0.6
	2005	13.62	9,578	+0.5	318.8	-1.6
	2006	14.31	9,988	+4.3	326.3	+2.4
	2007	14.42	9,780	-2.1	313.5	-3.9
	2008	15.31	10,067	+2.9	321.6	+2.6
Theft	2004	73.29	51,090	0.0	1,737.7	-2.3
	2005	73.37	51,597	+1.0	1,717.4	-1.2
	2006	72.68	50,731	-1.7	1,657.5	-3.5
	2007	72.25	48,996	-3.4	1,570.3	-5.3
	2008	72.29	47,539	-3.0	1,518.8	-3.3
Motor Vehicle Theft	2004	4.44	3,095	-3.8	105.3	-5.9
	2005	4.15	2,918	-5.7	97.1	-7.8
	2006	3.92	2,736	-6.2	89.4	-7.9
	2007	3.91	2,650	-3.1	84.9	-5.0
	2008	3.47	2,279	-14.0	72.8	-14.3
Arson	2004	0.69	481	-13.6	16.4	-15.5
	2005	0.66	467	-2.9	15.5	-5.5
	2006	0.55	381	-18.4	12.4	-20.0
	2007	0.57	388	+1.8	12.4	0.0
	2008	0.48	314	-19.1	10.0	-19.4
Crimes Against Property Subtotal	2004	92.09	64,196	-0.1	2,183.4	-2.3
	2005	91.80	64,560	+0.6	2,148.9	-1.6
	2006	91.45	63,836	-1.1	2,085.7	-2.9
	2007	91.15	61,814	-3.2	1,981.2	-5.0
	2008	91.54	60,199	-2.6	1,923.3	-2.9
Crimes Index Total	2004	100.00	69,713	-0.1	2,371.1	-2.4
	2005	100.00	70,326	+0.9	2,340.8	-1.3
	2006	100.00	69,802	-0.7	2,280.6	-2.6
	2007	100.00	67,812	-2.9	2,173.4	-4.7
	2008	100.00	65,761	-3.0	2,101.0	-3.3

Offenses reported in the collar counties account for 14.4% of the state crime index offense total.

Urban Counties Crime Index Offenses 2004-2008

INDEX OFFENSE	YEAR	% OF TOTAL	NUMBER OF OFFENSES	% VOLUME CHANGE	CRIME RATE PER 100,000	% RATE CHANGE
Murder	2004	0.11	120	+17.6	4.5	+18.4
	2005	0.13	143	+19.2	5.3	+17.8
	2006	0.12	131	-8.4	4.8	-9.4
	2007	0.13	157	+19.8	5.1	+6.3
	2008	0.13	149	-5.1	4.8	-5.9
Criminal Sexual Assault	2004	1.64	1,799	+5.6	67.3	+6.8
	2005	1.67	1,852	+2.9	68.7	+2.1
	2006	1.51	1,659	-10.4	61.1	-11.1
	2007	1.60	1,878	+13.2	61.6	+0.8
	2008	1.66	1,906	+1.5	61.9	+0.5
Robbery	2004	2.48	2,728	+8.5	102.0	+9.7
	2005	2.67	2,952	+8.2	109.6	+7.5
	2006	2.95	3,243	+9.9	119.4	+8.9
	2007	2.87	3,378	+4.2	110.8	-7.2
	2008	2.83	3,252	-3.7	105.7	-4.6
Aggravated Assault, Aggravated Battery, Attempted Murder & Ritual Mutilation	2004	10.17	11,170	+11.9	417.8	+13.3
	2005	10.31	11,416	+2.2	423.7	+1.4
	2006	10.13	11,140	-2.4	410.3	-3.2
	2007	10.72	12,615	+13.2	413.7	+0.8
	2008	10.52	12,089	-4.2	392.7	-5.1
Violent Crimes Against Persons Subtotal	2004	14.41	15,817	+10.6	591.7	+12.0
	2005	14.78	16,363	+3.5	607.4	+2.7
	2006	14.71	16,173	-1.2	595.6	-1.9
	2007	15.32	18,028	+11.5	591.3	-0.7
	2008	15.14	17,396	-3.5	565.2	-4.4
Burglary	2004	19.35	21,243	-6.5	794.6	-5.4
	2005	19.53	21,630	+1.8	802.9	+1.0
	2006	20.48	22,519	+4.1	829.3	+3.3
	2007	19.53	22,983	+2.1	753.8	-9.1
	2008	20.89	24,006	+4.5	779.9	+3.5
Theft	2004	60.09	65,976	-4.6	2,467.9	-3.4
	2005	59.64	66,041	+0.1	2,451.3	-0.7
	2006	59.01	64,886	-1.7	2,389.6	-2.5
	2007	59.44	69,948	+7.8	2,294.1	-4.0
	2008	58.73	67,479	-3.5	2,192.3	-4.4
Motor Vehicle Theft	2004	5.63	6,184	-7.1	231.3	-6.0
	2005	5.45	6,034	-2.4	224.0	-3.2
	2006	5.21	5,727	-5.1	210.9	-5.8
	2007	5.07	5,971	+4.3	195.8	-7.2
	2008	4.67	5,361	-10.2	174.2	-11.0
Arson	2004	0.53	582	-6.6	21.8	-5.2
	2005	0.60	668	+14.8	24.8	+13.8
	2006	0.60	660	-1.2	24.3	-2.0
	2007	0.63	744	+12.7	24.4	+0.4
	2008	0.58	663	-10.9	21.5	-11.9
Crimes Against Property Subtotal	2004	85.59	93,985	-5.2	3,515.6	-4.1
	2005	85.22	94,373	+0.4	3,502.9	-0.4
	2006	85.29	93,792	-0.6	3,454.1	-1.4
	2007	84.68	99,646	+6.2	3,268.1	-5.4
	2008	84.86	97,509	-2.1	3,167.9	-3.1
Crimes Index Total	2004	100.00	109,802	-3.2	4,107.3	-2.0
	2005	100.00	110,736	+0.9	4,110.3	+0.1
	2006	100.00	109,965	-0.7	4,049.7	-1.5
	2007	100.00	117,674	+7.0	3,859.4	-4.7
	2008	100.00	114,905	-2.4	3,733.0	-3.3

Offenses reported in urban counties account for 25.2% of the state crime index offense total.

Rural Counties Crime Index Offenses 2004-2008

INDEX OFFENSE	YEAR	% OF TOTAL	NUMBER OF OFFENSES	% VOLUME CHANGE	CRIME RATE PER 100,000	% RATE CHANGE
Murder	2004	0.08	38	+8.6	2.3	+9.5
	2005	0.03	15	-60.5	0.9	-60.9
	2006	0.07	30	+100.0	1.8	+100.0
	2007	0.04	13	-56.7	0.9	-50.0
	2008	0.06	18	+38.5	1.3	+44.4
Criminal Sexual Assault	2004	1.85	830	-7.0	49.2	-9.6
	2005	2.05	922	+11.1	54.6	+11.0
	2006	1.97	873	-5.3	51.9	-4.9
	2007	1.93	612	-29.9	44.5	-14.3
	2008	2.20	662	+8.2	48.7	+9.4
Robbery	2004	0.80	359	+0.8	21.3	-1.8
	2005	0.89	399	+11.1	23.6	+10.8
	2006	0.89	396	-0.8	23.5	-0.4
	2007	0.65	205	-48.2	14.9	-36.6
	2008	0.59	176	-14.1	12.9	-13.4
Aggravated Assault, Aggravated Battery, Attempted Murder & Ritual Mutilation	2004	10.07	4,510	-0.7	267.1	-3.5
	2005	10.75	4,841	+7.3	286.9	+7.4
	2006	11.14	4,931	+1.9	292.9	+2.1
	2007	11.46	3,627	-26.4	263.9	-9.9
	2008	10.91	3,277	-9.6	241.1	-8.6
Violent Crimes Against Persons Subtotal	2004	12.81	5,737	-1.5	339.8	-4.3
	2005	13.72	6,177	+7.7	366.1	+7.7
	2006	14.07	6,230	+0.9	370.0	+1.1
	2007	14.08	4,457	-28.5	324.3	-12.4
	2008	13.76	4,133	-7.3	304.0	-6.3
Burglary	2004	20.55	9,203	-0.1	545.0	-3.0
	2005	20.45	9,211	+0.1	545.9	+0.2
	2006	20.42	9,038	-1.9	536.8	-1.7
	2007	19.70	6,234	-31.0	453.6	-15.5
	2008	20.25	6,084	-2.4	447.6	-1.3
Theft	2004	62.61	28,038	-0.1	1,660.5	-3.0
	2005	61.78	27,823	-0.8	1,648.9	-0.7
	2006	61.82	27,368	-1.6	1,625.6	-1.4
	2007	62.72	19,847	-27.5	1,444.2	-11.2
	2008	62.93	18,907	-4.7	1,390.9	-3.7
Motor Vehicle Theft	2004	3.46	1,551	-2.8	91.9	-5.5
	2005	3.42	1,540	-0.7	91.3	-0.7
	2006	3.18	1,409	-8.5	83.7	-8.3
	2007	2.91	920	-34.7	66.9	-20.1
	2008	2.43	730	-20.7	53.7	-19.7
Arson	2004	0.56	252	-14.9	14.9	-17.2
	2005	0.63	283	+12.3	16.8	+12.8
	2006	0.51	224	-20.8	13.3	-20.8
	2007	0.59	188	-16.1	13.7	+3.0
	2008	0.64	192	+2.1	14.1	+2.9
Crimes Against Property Subtotal	2004	87.19	39,044	-0.3	2,312.4	-3.2
	2005	86.28	38,857	-0.5	2,302.8	-0.4
	2006	85.93	38,039	-2.1	2,259.4	-1.9
	2007	85.92	27,189	-28.5	1,978.5	-12.4
	2008	86.24	25,913	-4.7	1,906.2	-3.7
Crimes Index Total	2004	100.00	44,781	-0.5	2,652.1	-3.3
	2005	100.00	45,034	+0.6	2,668.8	+0.6
	2006	100.00	44,269	-1.7	2,629.5	-1.5
	2007	100.00	31,646	-28.5	2,302.8	-12.4
	2008	100.00	30,046	-5.1	2,210.3	-4.0

Offenses reported in rural counties account for 6.6% of the state crime index offense total.

