

CONTENTS

DEDICATION	3
SUMMARY OF CRIME IN ILLINOIS.....	5
FREQUENCY OF CRIME	5
STATE OF ILLINOIS	6
CRIME INDEX OFFENSES	7
CRIME INDEX OFFENSE ARRESTS.....	7
VIOLENT CRIME	8
PROPERTY CRIME	9
CORE BASED STATISTICAL AREAS.....	10
SUPPLEMENTAL DATA	
Domestic Crimes	11
Crimes Against Children	12
Crimes Against School Personnel	13
Hate Crimes.....	14
LAW ENFORCEMENT EMPLOYEE INFORMATION	15

INTRODUCTION

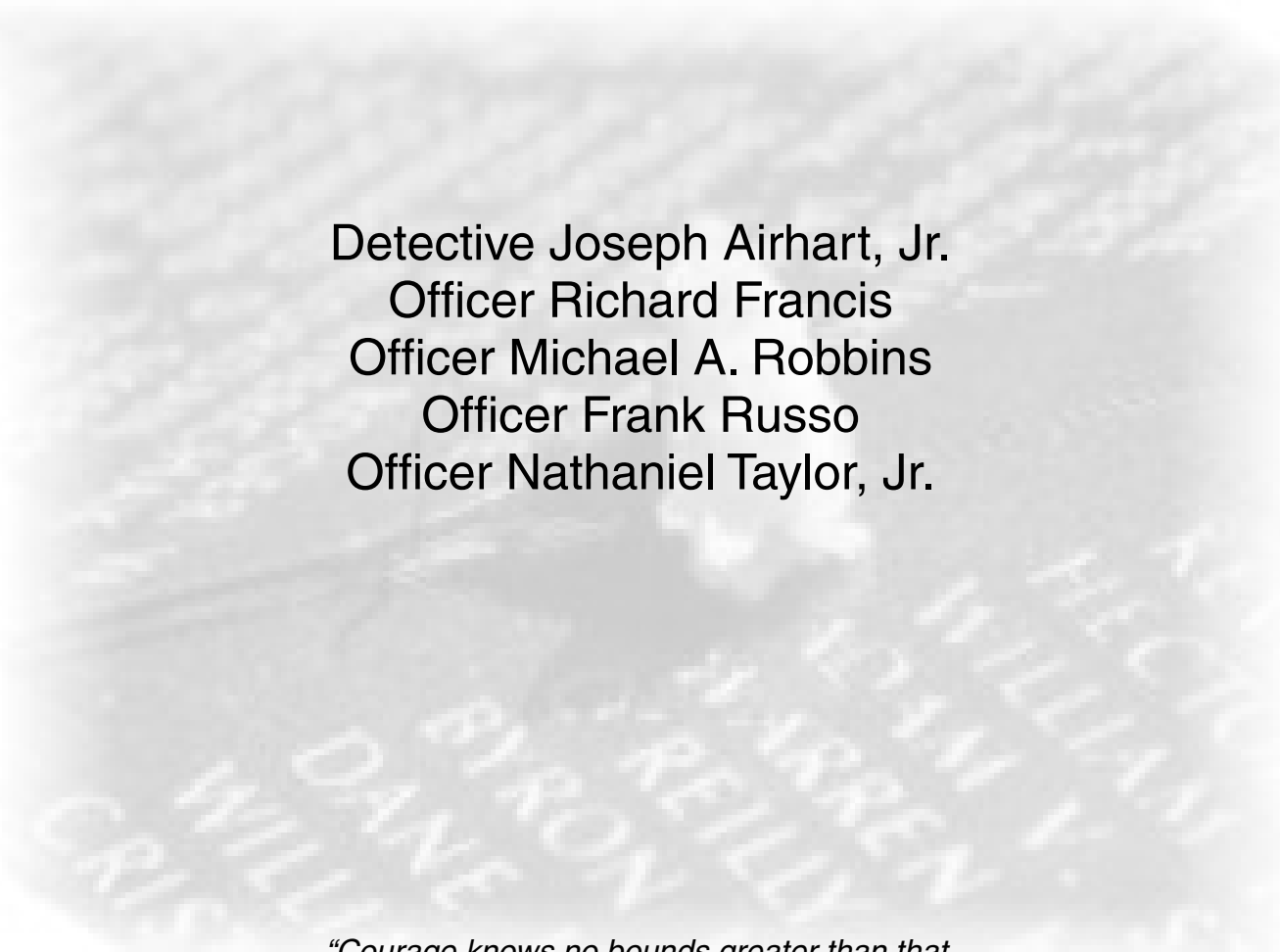
This Executive Summary of the *Crime in Illinois 2008*, annual uniform crime report, is intended to provide readers with a high-level overview of the nature of crime in Illinois. This summary highlights statewide statistics and topics of interest. Detailed statistics and analyses are contained in the complete *Crime in Illinois 2008*, annual uniform crime report, which is available via the internet through the Illinois State Police website at <http://www.isp.state.il.us>.

During 2008, data from 891 agencies was submitted directly to the Illinois Uniform Crime Reporting (I-UCR) Program. The remaining agencies reported their crime statistics through an intermediary agency (sheriff's office, police department, etc.). A listing of agencies that participated and their respective extent of participation is available in the complete publication.

Local law enforcement agencies are mandated by Chapter 20 of the Illinois Compiled Statutes, 2630/8, to report crime index offenses, crime index offense arrests, and drug arrests. The 2007 figures may not reflect the figures published in *Crime in Illinois 2007* due to submission of late and/or adjusted data.

DEDICATION

This report is dedicated to all law enforcement officers, and in particular, to those police officers who lost their lives during the past year in the performance of duty while upholding the laws of the state of Illinois.



Detective Joseph Airhart, Jr.
Officer Richard Francis
Officer Michael A. Robbins
Officer Frank Russo
Officer Nathaniel Taylor, Jr.

*“Courage knows no bounds greater than that,
that a man or woman shall give his or her life in the
service of his or her community.”
(Source Unknown)*

SUMMARY OF CRIME IN ILLINOIS

Crime index offenses are considered to be the most serious and the most likely to be reported, and are used nationally as the standard base for comparisons. The I-UCR crime index offenses and crime index offense arrests include the categories of murder, criminal sexual assault, robbery, aggravated assault/battery (including attempted murder and ritual mutilation), burglary, theft (including burglary from a motor vehicle), motor vehicle theft, and arson.

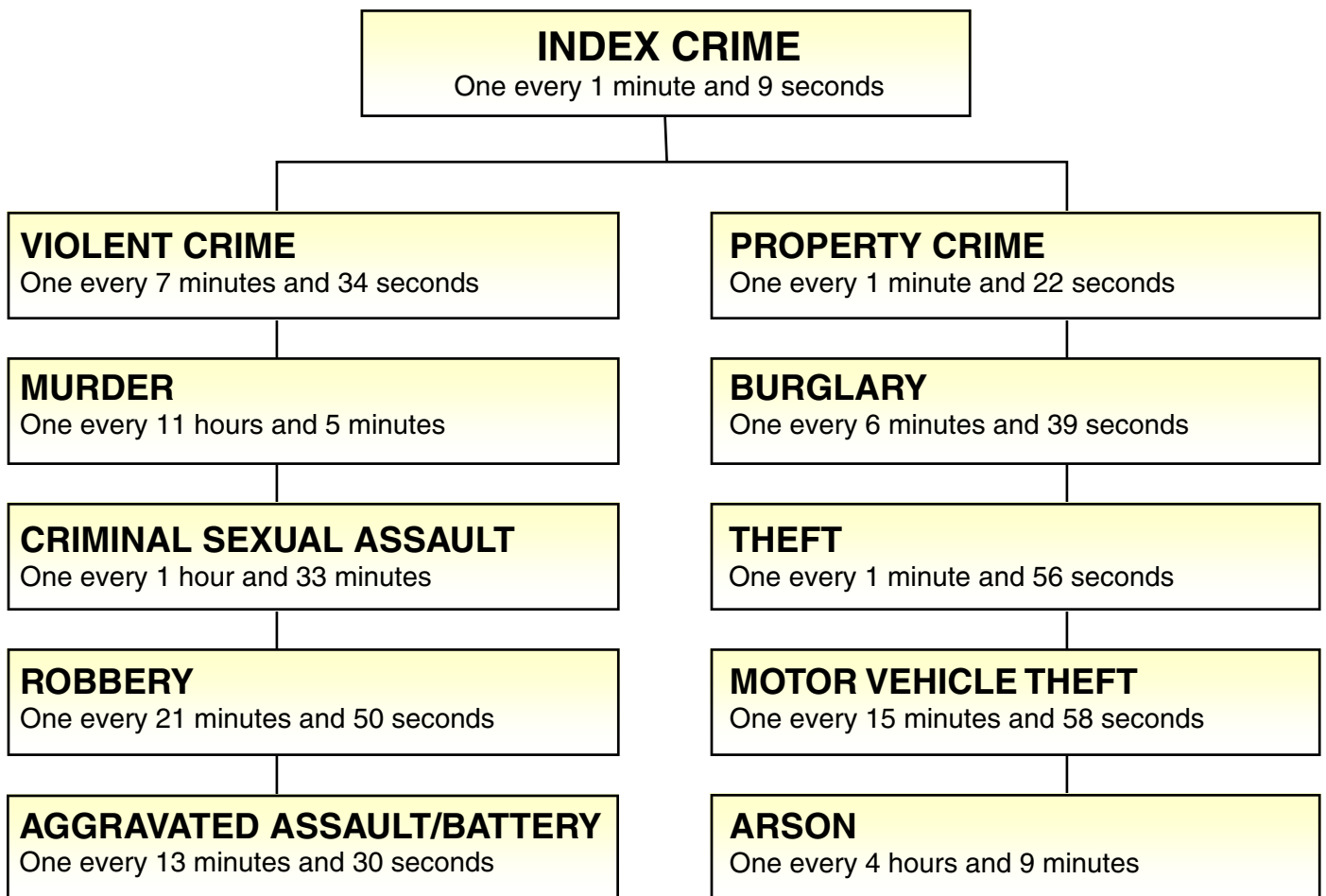
Summary

There were 456,359 crime index offenses reported to the I-UCR Program this year, an average of 1,250 each day, or one every 69 seconds. This is a 0.2 percent decrease from the 457,071 crime index offenses reported last year. The crime index offense rate for 2008 is 3,550.7 per 100,000 inhabitants. This is a 0.3 percent decrease from the 2007 crime rate of 3,562.0 per 100,000 inhabitants.

Arrests

There were 98,611 arrests in 2008 for crime index offenses. This is a 2.6 percent increase from the 96,128 arrests reported in 2007. The crime index offense arrest rate for 2008 is 767.2 per 100,000 inhabitants.

FREQUENCY OF CRIME



STATE OF ILLINOIS

Law Enforcement Employee Information:	Female	Male	Total	2008 Population	12,852,548
Sworn Full-Time	5,519	29,469	34,988	2007 Population	12,831,970
Civilian Full-Time	7,057	6,921	13,978		
Sworn Part-Time	218	3,571	3,789		
Auxiliary Officers	190	1,839	2,029		
Total*	12,984	41,800	54,784		

* Police Departments, Sheriffs' Offices, Colleges and Universities, Secretary of State only.

CRIME INDEX OFFENSES / CRIME RATE COMPARISON 2008/2007

Year	Total Crime Index Offenses	Murder	Criminal Sexual Assault	Robbery	Aggravated Assault / Battery	Burglary	Theft	Motor Vehicle Theft	Arson
2008	456,359	790	5,620	24,079	38,952	78,968	272,916	32,925	2,109
2007	457,071	751	5,625	23,161	40,772	75,552	274,602	34,270	2,338
% Chg	-0.2%	5.2%	-0.1%	4.0%	-4.5%	4.5%	-0.6%	-3.9%	-9.8%
2008	(3,550.7)	(6.1)	(43.7)	(187.3)	(303.1)	(614.4)	(2,123.4)	(256.2)	(16.4)
2007	(3,562.0)	(5.9)	(43.8)	(180.5)	(317.7)	(588.8)	(2,140.0)	(267.1)	(18.2)
% Chg	(-0.3%)	(3.4%)	(-0.2%)	(3.8%)	(-4.6%)	(4.3%)	(-0.8%)	(-4.1%)	(-9.9%)

Rate per 100,000 is in parentheses.

CRIME INDEX OFFENSES / ARREST RATE COMPARISON 2008/2007

Year	Total Crime Index Offenses	Murder	Criminal Sexual Assault	Robbery	Aggravated Assault / Battery	Burglary	Theft	Motor Vehicle Theft	Arson
2008	98,611	597	1,458	4,923	17,218	10,701	57,598	5,705	411
2007	96,128	613	1,525	4,927	17,524	10,458	54,021	6,611	449
% Chg	2.6%	-2.6%	-4.4%	-0.1%	-1.7%	2.3%	6.6%	-13.7%	-8.5%
2008	(767.2)	(4.6)	(11.3)	(38.3)	(134.0)	(83.3)	(448.1)	(44.4)	(3.2)
2007	(749.1)	(4.8)	(11.9)	(38.4)	(136.6)	(81.5)	(421.0)	(51.5)	(3.5)
% Chg	(2.4%)	(-4.2%)	(-5.0%)	(-0.3%)	(-1.9%)	(2.2%)	(6.4%)	(-13.8%)	(-8.6%)

Rate per 100,000 is in parentheses.

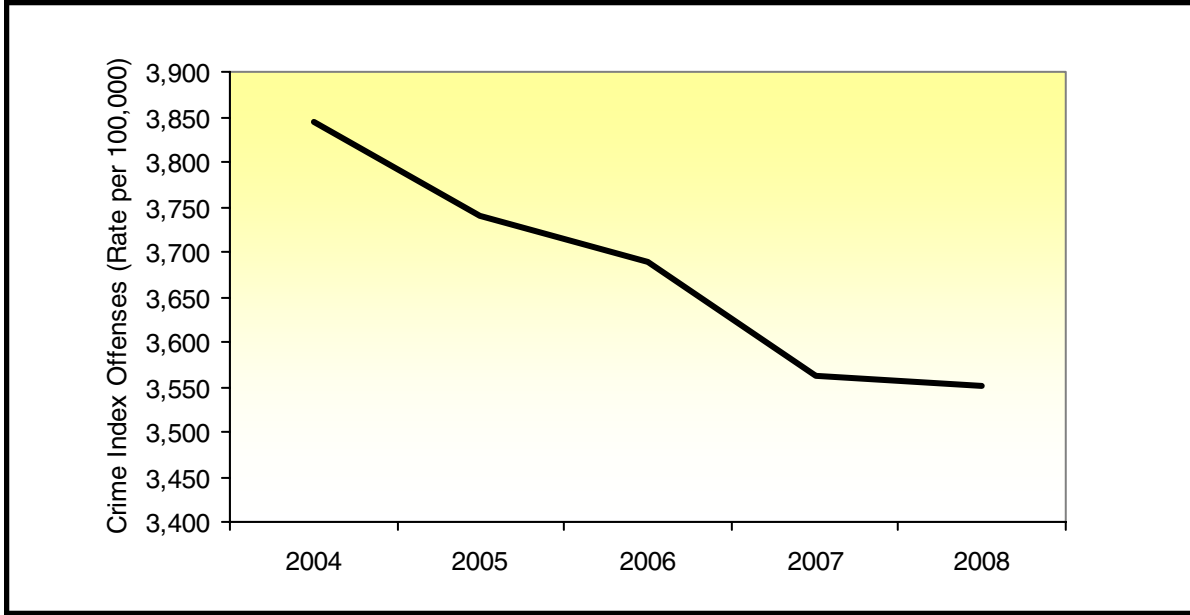
DRUG CRIME ARREST COMPARISON 2008/2007

Year	Rate per 100,000	Total Drug Arrests	Cannabis Control Act	Controlled Substances Act	Hypodermic Syringes & Needles Act	Drug Paraphernalia Act
2008	769.6	98,914	50,732	32,493	556	15,113
2007	859.5	110,297	54,879	39,145	598	15,675
% Chg	-10.5%	-10.3%	-7.6%	-17.0%	-7.0%	-3.5%

SUPPLEMENTAL DATA - TOTAL OFFENSES REPORTED 2008/2007

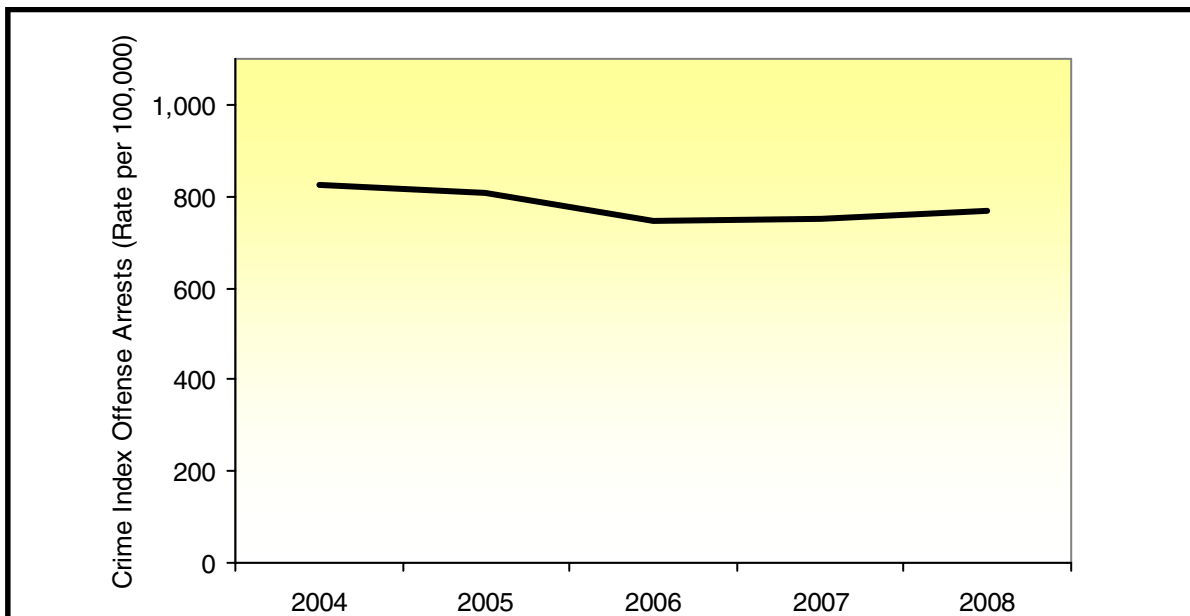
Year	Crimes Against School Personnel	Crimes Against Children	Domestic Crimes	Hate Crimes
2008	3,456	32,519	109,089	180
2007	3,473	34,096	115,008	195
% Chg	-0.5%	-4.6%	-5.1%	-7.7%

CRIME INDEX OFFENSES

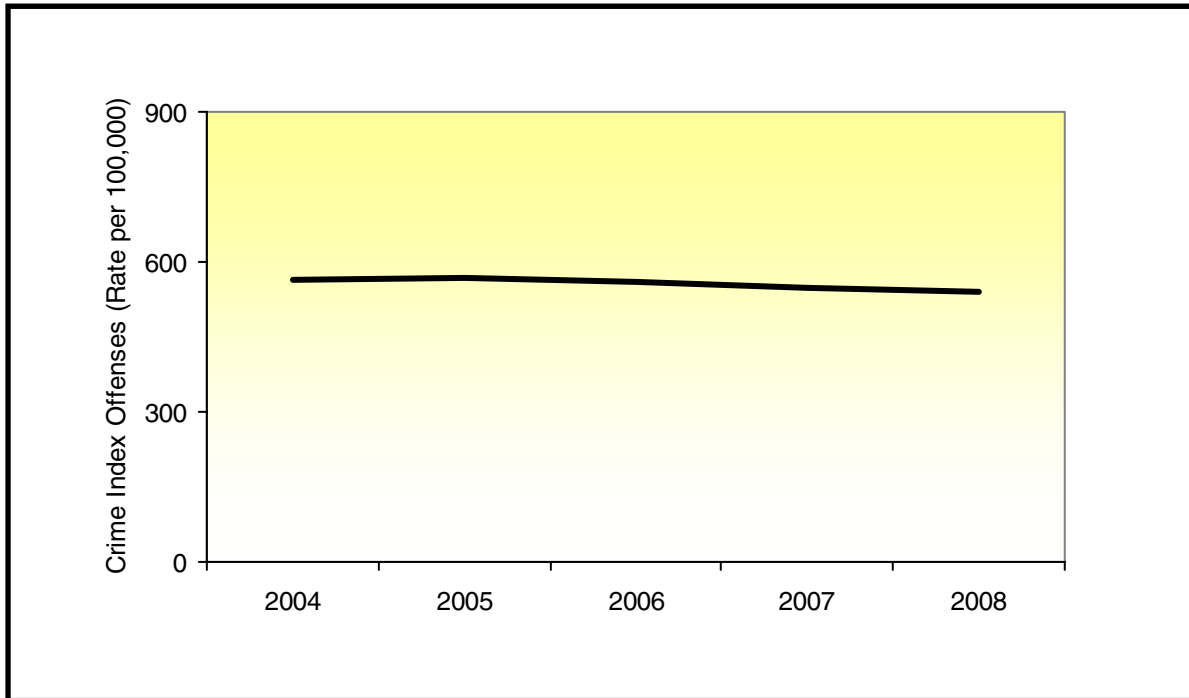


Crime Index Offenses	2004	2005	2006	2007	2008
Number of Offenses	486,469	475,497	470,730	457,071	456,359
Percent Change from Previous Year	-2.3%	-2.3%	-1.0%	-2.9%	-0.2%
Rate per 100,000 Inhabitants	3,844.5	3,740.1	3,688.1	3,562.0	3,550.7
Number of Arrests	104,607	102,905	95,404	96,128	98,611
Percent Change from Previous Year	-3.3%	-1.6%	-7.3%	0.8%	2.6%
Rate per 100,000 Inhabitants	826.7	809.4	747.5	749.1	767.2

CRIME INDEX OFFENSE ARRESTS



VIOLENT CRIME



Definition: The crime index offenses of murder, criminal sexual assault, robbery, and aggravated assault/battery (including attempted murder and ritual mutilation) comprise the general category of violent crime.

Violent Crime Index Offenses	2004	2005	2006	2007	2008
Number of Offenses	71,142	72,348	71,678	70,309	69,441
Percent Change from Previous Year	-1.4%	1.7%	-0.9%	-1.9%	-1.2%
Rate per 100,000 Inhabitants	562.2	569.1	561.6	547.9	540.3

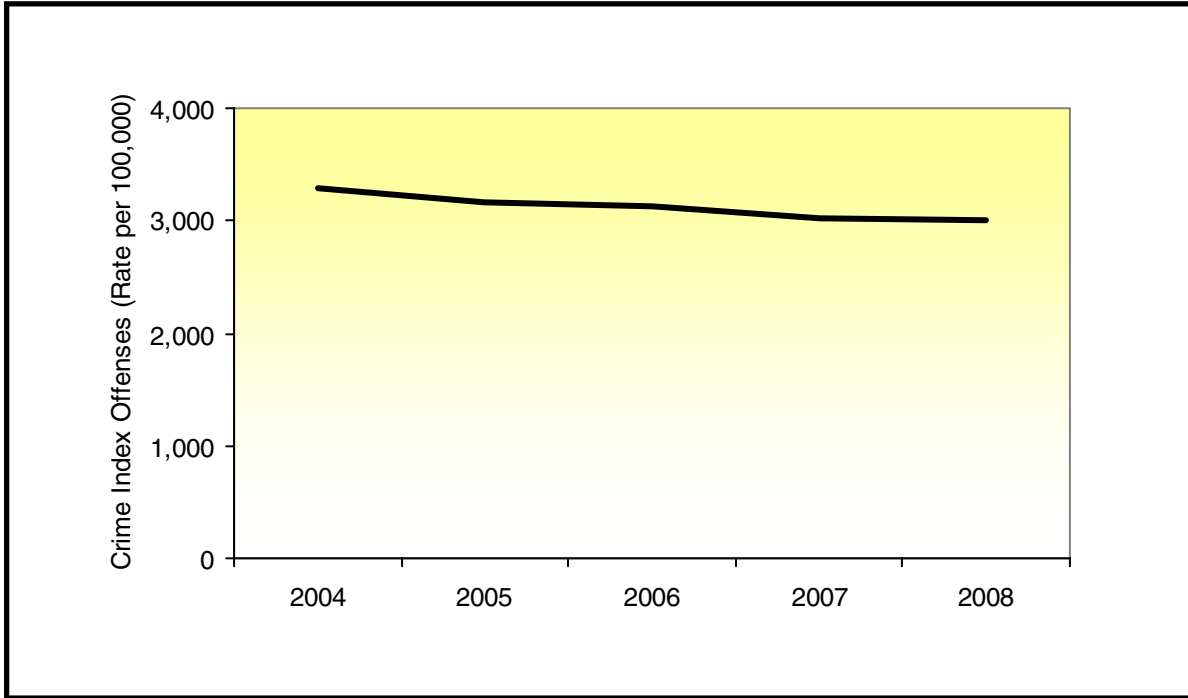
Summary

There were 69,441 violent crime offenses reported to the I-UCR Program this year, an average of 190 each day, or one every 7 minutes and 34 seconds. This is a 1.2 percent decrease from the 70,309 violent crime index offenses reported last year. The violent crime offense rate for 2008 is 540.3 per 100,000 inhabitants.

Arrests

There were 24,196 arrests this year for violent crime offenses. This is a 1.6 percent decrease from the 24,589 arrests reported last year. The violent crime offense arrest rate for 2008 is 188.3 per 100,000 inhabitants.

PROPERTY CRIME



Definition: The crime index offenses of burglary, theft (including burglary from a motor vehicle), motor vehicle theft, and arson comprise the general category of property crime.

Property Crime Offenses	2004	2005	2006	2007	2008
Number of Offenses	415,327	403,149	399,052	386,762	386,918
Percent Change from Previous Year	-2.4%	-2.9%	-1.0%	-3.1%	0.1%
Rate per 100,000 Inhabitants	3,282.3	3,171.0	3,126.5	3,014.1	3,010.4

Summary

There were 386,918 property crime offenses reported to the I-UCR Program this year, an average of 1,060 each day, or one every 1 minute and 22 seconds. This is a 0.1 percent increase from the 386,762 crime index offenses reported last year. The property crime index offense rate for 2008 is 3,014.1 per 100,000 inhabitants.

Arrests

There were 74,415 arrests this year for property crime offenses. This is a 4.0 percent decrease from the 71,539 arrests reported last year. The property crime index offense rate for 2008 is 579.0 per 100,000 inhabitants.

CORE BASED STATISTICAL AREAS

The United States Office of Management and Budget developed new standards to define Core Based Statistical Areas (CBSAs) beginning in 2003. These standards replace and supersede the 1990 standards for defining Metropolitan Statistical Areas.

CBSAs are defined as a statistical geographic entity consisting of the county or counties associated with at least one core (urbanized area or urban cluster) of at least 10,000 population, plus adjacent counties having a high degree of social and economic integration with the core as measured through commuting ties with the counties containing the core. The new standards designate and define two categories of CBSAs: Metropolitan Statistical Areas and Micropolitan Statistical Areas. These are the terms used for the basic set of county-based areas as defined under this classification.

Metropolitan Statistical Areas have at least one urbanized area of 50,000 or more population, plus adjacent territory that has a high degree of social and economic integration with the core as measured by commuting ties. Micropolitan Statistical Areas—a new set of statistical areas—have at least one urban cluster of at least 10,000 but less than 50,000 population, plus adjacent territory that has a high degree of social and economic integration with the core as measured by commuting ties. If the specified criteria are met, a Metropolitan Statistical Area containing a single core with a population of 2.5 million or more may be subdivided to form smaller groupings of counties referred to as Metropolitan Divisions. Counties that do not fall within CBSAs represent Outside Core Based Statistical Areas.

There are 11 Metropolitan Statistical Areas that include 36 counties in Illinois. Inhabitants of the Metropolitan Statistical Areas account for 87.1 percent of the state’s population and 91.1 percent of the Illinois crime index offenses. There are 23 Micropolitan Statistical Areas that include 29 counties in Illinois. Inhabitants of the Micropolitan Statistical Areas account for 8.3 percent of the state’s population and 6.5 percent of the Illinois crime index offenses. There are 37 counties that comprise the Outside Core Based Statistical Areas in Illinois. Inhabitants of the Outside Core Based Statistical Areas account for 4.8 percent of the state’s population and 2.4 percent of the Illinois crime index offenses. In some cases the percentages may not sum to 100 due to rounding.

Six of Illinois’ Metropolitan and Micropolitan Statistical Areas are part of areas in Indiana, Iowa, Kentucky, Missouri, and Wisconsin. Areas outside of Illinois are not represented in the statistics presented here.

CBSA Category	2008 Population	Total Crime Index Offenses	Crime Rate per 100,000	Violent Crime Index Offenses	Property Crime Index Offenses
Metropolitan Statistical Areas	11,197,587	415,795	3,713.3	63,944	351,851
Micropolitan Statistical Areas	1,064,052	29,663	2,787.7	3,542	26,121
Total Metro– and Micropolitan Statistical Areas	12,261,639	445,458	6,501.0	67,486	377,972
Outside Core Based Statistical Areas	619,466	10,858	1,752.8	1,951	8,907

SUPPLEMENTAL DATA

In April 1996, the I-UCR Program began collecting additional crime information. This data includes statistics pertaining to offenses mandated by state statutes and offenses concerning children. Due to limitations of agencies' reporting systems, all agencies are not included in the totals presented in the following tables. In some cases, the percentages may not sum to 100 due to rounding.

DOMESTIC CRIMES

Reporting domestic violence is mandated by Chapter 20 of the Illinois Compiled Statutes, 2630/5.1. Domestic-related crimes are defined as crimes committed by family or household members, including spouses, former spouses, parents, children, stepchildren and other persons related by blood or marriage, persons who share or formerly shared a common dwelling, and persons who have or allegedly have a child in common. In the case of a high-risk adult with disabilities, family or household member includes any person who has the responsibility for that individual as a result of a family relationship, or who has assumed responsibility for all or a portion of the care voluntarily, by express or implied contract, or court order.

Summary

There were 109,089 domestic violence offenses reported to the I-UCR Program this year, an average of 298 each day, or one every 4 minutes and 49 seconds. This is a 5.1 percent decrease from the 115,008 domestic violence offenses reported last year. The domestic violence offense rate is 848.8 per 100,000 inhabitants.

DOMESTIC CRIMES BY RELATIONSHIP*

Family Related			
Relationship Type	Group Percent	Relationship	Percent of Total
Marital	39.6%	Spouse	35.4%
		Ex-Spouse	4.2%
Parental/Child	39.0%	Parent	16.7%
		Step-Parent	1.5%
		Grandparent	1.1%
		Child	15.4%
		Step-child	2.1%
		Grandchild	0.6%
		Child of Boyfriend/Girlfriend	1.5%
Other Family	21.4%	Sibling	12.6%
		Step-sibling	0.4%
		In-law	1.5%
		Other Family	6.9%

Other Domestic Related	
Relationship Type	Percent of Total
Boyfriend/Girlfriend	74.6%
Same Sex Relationship	1.5%
Child in Common with Offender	6.8%
Friend**	2.9%
Otherwise Known***	14.3%

**Includes roommates.

***Includes personal care assistants.

*Due to software issues, the 'Relationship Type' is unavailable from Chicago Police Department data and is not represented in the 'Domestic Crimes by Relationship' tables.

SUPPLEMENTAL DATA

CRIMES AGAINST CHILDREN

Although reporting in this category is not mandated by state statutes, information is collected to research and evaluate the problems of offenses against children. Contributing agencies are not required to report this data to the I-UCR Program. All crimes reported by participating agencies that involve victims aged 16 years and younger are included in this category.

Summary

There were 32,519 crimes against children reported to the I-UCR Program this year, an average of 89 each day, or one every 16 minutes and 9 seconds. This is a 4.6 percent decrease from the 34,096 crimes reported last year. The crimes against children offense rate is 253.0 per 100,000 inhabitants.

OFFENSE TYPE BY VICTIM AGE GROUP

Crime by Category	Ages Under 1 to 5 Years	Percent of Category Total	Ages 6 to 12 Years	Percent of Category Total	Ages 13 to 16 Years	Percent of Category Total	Total Under 1 to 16 Years	Percent of Total (32,519)
Murder	13	20.0%	7	10.8%	45	69.2%	65	0.2%
Criminal Sexual Assault	191	18.1%	289	27.3%	577	54.6%	1,057	3.2%
Robbery	23	1.3%	305	16.6%	1,507	82.1%	1,835	5.6%
Aggravated Assault/Battery	185	5.4%	686	20.1%	2,540	74.5%	3,411	10.5%
Assault/Battery	728	4.4%	4,290	25.9%	11,566	69.7%	16,584	51.0%
Burglary	17	7.9%	58	26.9%	141	65.3%	216	0.7%
Theft	60	3.0%	463	23.3%	1,465	73.7%	1,988	6.1%
Theft/Burglary From a Motor Vehicle	1	3.8%	1	3.8%	24	92.3%	26	0.1%
Motor Vehicle Theft	18	56.3%	4	12.5%	10	31.3%	30	0.1%
Arson	18	45.0%	13	32.5%	9	22.5%	40	0.1%
Sex Offenses	249	14.9%	585	35.0%	837	50.1%	1,671	5.1%
Offenses Involving Children	1,391	49.2%	938	33.2%	497	17.6%	2,828	8.7%
Disorderly Conduct	58	6.2%	167	17.8%	711	76.0%	936	2.9%
Intimidation	0	0.0%	4	6.8%	55	93.2%	59	0.2%
Kidnapping	166	27.9%	249	41.8%	180	30.3%	595	1.8%
Deadly Weapon	3	12.0%	7	28.0%	15	60.0%	25	0.1%
Violation of Orders of Protection	49	191.1%	86	33.6%	121	47.3%	256	0.8%
All Other Offenses	108	12.0%	194	21.6%	595	66.3%	897	2.8%
TOTAL	3,278	10.1%	8,346	25.7%	20,895	64.2%	32,519	100.0%

SUPPLEMENTAL DATA

CRIMES AGAINST SCHOOL PERSONNEL

The reporting of attacks on school personnel is mandated by Chapter 105 of the Illinois Compiled Statutes, 5/10-21.7. The I-UCR Program collects information relating to all crimes committed against teachers, administrative personnel, or educational support personnel. This includes teacher’s aides, bus drivers, or janitors, etc., who are employed by the school.

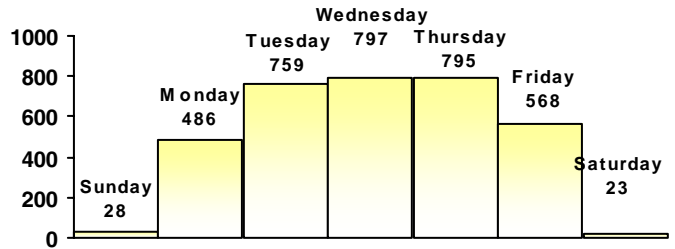
Summary

There were 3,456 crimes against school personnel reported to the I-UCR Program this year, an average of 9 each day, or one every 2 hours and 32 minutes. This is a 0.5 percent decrease from the 3,473 crimes reported last year. The crimes against school personnel offense rate is 25.3 per 100,000 inhabitants.

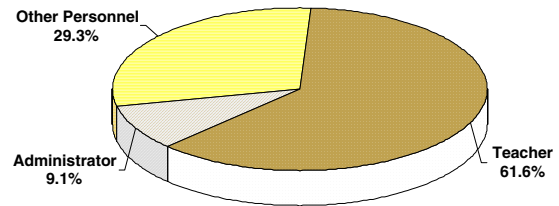
OFFENSE TYPE BY CRIME CATEGORY

Crime by Category	Number of Offenses	Percent of Total
Murder	0	0.0%
Criminal Sexual Assault	0	0.0%
Robbery	1	0.0%
Aggravated Assault/Battery	2,628	76.0%
Simple Assault/Battery	566	16.4%
Burglary	1	0.0%
Theft	77	2.2%
Theft/Burglary From a Motor Vehicle	2	0.1%
Motor Vehicle Theft	0	0.0%
Arson	0	0.0%
Sex Offenses	7	0.2%
Offenses Involving Children	0	0.0%
Disorderly Conduct	90	2.6%
Intimidation	4	0.1%
Kidnapping	0	0.0%
Deadly Weapon	44	1.3%
All Other Offenses	36	1.0%
TOTAL	3,456	100.0%

OFFENSES BY DAY OF OCCURRENCE



OFFENSES BY VICTIM TYPE*



*Due to software issues, the 'Victim Type' is unavailable from Chicago Police Department data and is not represented in the 'Offenses by Victim Type' chart.

SUPPLEMENTAL DATA

HATE CRIME

The reporting of hate crime information is mandated by Chapter 20 of the Illinois Compiled Statutes, 2605/390(a). A hate crime is committed when, by reason of the actual or perceived race, color, creed, religion, ancestry, gender, sexual orientation, physical or mental stability, or national origin of another individual or group of individuals, a person commits assault, battery, aggravated assault, misdemeanor theft, criminal trespass to residence, misdemeanor criminal damage to property, criminal trespass to vehicle, criminal trespass to real property, mob action, or disorderly conduct.

Summary

This year, 180 hate crime offenses were reported through the I-UCR Program. These offenses were committed by 252 offenders. This is a 5.8 percent decrease from the 191 offenses reported last year. Multiple victims and/or offenses may be reported within a single incident. The following table depicts hate crime data by victim, offender race, and bias motivation.

OFFENSE TYPE BY CATEGORY

Hate Crime Offenses by Type of Victim		
Type of Victim	Number of Offenses	Percent of Total
Business	6	3.3%
Government	4	2.2%
Individual	152	84.4%
Other	12	6.7%
Religious Organization	5	2.8%
Unknown	1	0.6%
TOTAL	180	100.0%

Hate Crime Offenses by Offender Race		
Offender's Race	Number of Offenders	Percent of Total
Asian/Pacific Islander	2	0.8%
Black	45	17.9%
Multi-Racial Group	3	1.2%
Unknown	69	27.4%
White	133	58.8%
TOTAL	252	100.0%

Bias Motivation Totals		
Bias Motivation	Number of Offenses	Percent of Total
Anti-American Indian/Alaskan Native	1	0.6%
Anti-Asian/Pacific Islander	4	2.2%
Anti-Black	81	45.0%
Anti-Female	2	1.1%
Anti-Female Homosexual (Lesbian)	1	0.6%
Anti-Heterosexual	1	0.6%
Anti-Hispanic	13	7.2%
Anti-Homosexual (Gay & Lesbian)	9	5.0%
Anti-Islamic (Muslim)	1	0.6%
Anti-Jewish	25	13.9%
Anti-Male Homosexual (Gay)	22	12.2%
Anti-Mental	1	0.6%
Anti-Multi-Racial Group	4	2.2%
Anti-Other Ethnicity/Nat'l Origin	4	2.2%
Anti-Other Religious	2	1.1%
Anti-White	9	5.0%
TOTAL	180	100.0%

LAW ENFORCEMENT EMPLOYEE INFORMATION

Sworn & Civilian Full-Time Law Enforcement Employees by Agency Type					
Sworn & Civilian Full-Time Employees	Police Departments	Sheriff's Offices	Miscellaneous Agencies	Total	Percent of Total
0 - 10	470	10	40	520	50.2%
11- 50	229	58	44	331	31.9%
51- 200	111	24	11	146	14.1%
201 +	26	10	3	39	3.8%
TOTAL	836	102	98	1,036	100.0%

Statewide

The statewide total number of law enforcement personnel in Illinois for 2008 is 59,834. The 42,272 part- and full-time sworn officers in 2008 account for 70.6 percent of the entire state of Illinois' law enforcement work force. The 2008 rate of sworn employees to population for Illinois is 3.3 per 1,000 inhabitants. The 15,494 civilian employees comprise 25.9 percent of the entire state of Illinois law enforcement community's work force, with an employment rate of 1.2 per 1,000 inhabitants. The 2,068 auxiliary officers (officers not on active duty but subject to call in an emergency situation) in 2008 account for 3.5 percent of the entire state of Illinois law enforcement community's work force, with an employment rate of 0.2 per 1,000 inhabitants.

Police Departments

Police departments employed 37,732 law enforcement employees statewide in 2008 accounting for 63.1 percent of the state law enforcement employee total. Part- and full-time sworn officers account for 83.3 percent (31,429) of the police department work force. The 2008 employment rate for sworn employees of police departments is 2.9 per 1,000 inhabitants. The 5,004 civilian employees comprise 13.3 percent of the police department work force, with an employment rate of 0.5 per 1,000 inhabitants. The 1,299 auxiliary officers in 2008 comprise 3.4 percent of the police department work force, with an employment rate of 0.1 per 1,000 inhabitants.

Sheriffs' Offices

Sheriffs' offices employed 15,238 law enforcement employees statewide in 2008 accounting for 25.5 percent of the state law enforcement employee total. The 6,040 part- and full-time sworn officers in 2008 account for 39.6 percent of the sheriffs' offices work force. The 2008 employment rate for sworn employees of sheriffs' offices is 3.0 per 1,000 inhabitants. The 8,473 civilian employees comprise 55.6 percent of the sheriffs' offices work force, with an employment rate of 4.8 per 1,000 inhabitants. The 725 auxiliary officers in 2008 comprise 4.8 percent of the sheriffs' offices work force, with an employment rate of 0.4 per 1,000 inhabitants.

Miscellaneous Agencies

Miscellaneous agencies employed 6,864 law enforcement employees statewide in 2008 accounting for 11.5 percent of the state law enforcement employee total. Miscellaneous agencies reported 4,803 part- and full-time sworn officers in 2008 accounting for 70.0 percent of the miscellaneous agencies work force. These agencies include airports, colleges and universities, fire departments and arson investigations, forest preserves, hospitals, other agencies, park districts, and railroads. Since miscellaneous agencies do not have a population, employment rates cannot be calculated. The 2,017 civilian employees comprise 29.4 percent of the miscellaneous agencies work force. The 44 auxiliary officers in 2008 comprise 0.6 percent of the miscellaneous agencies work force.

Inquiries on the data presented in this
publication may be directed to:

Illinois State Police
Illinois Uniform Crime Reporting Program
801 South 7th Street, Suite 300-M
P.O. Box 19461
Springfield, IL 62794
217/557-6482

Internet Address:
<http://www.isp.state.il.us>
<http://www.illinois.gov>