

CONTENTS

DEDICATION	3
SUMMARY OF CRIME IN ILLINOIS.....	5
FREQUENCY OF CRIME	5
STATE OF ILLINOIS	6
CRIME INDEX OFFENSES	7
CRIME INDEX OFFENSE ARRESTS.....	7
VIOLENT CRIME	8
PROPERTY CRIME	9
CORE BASED STATISTICAL AREAS.....	10
SUPPLEMENTAL DATA	
Domestic Crimes	11
Crimes Against Children	12
Crimes Against School Personnel	13
Hate Crimes.....	14
LAW ENFORCEMENT EMPLOYEE INFORMATION	15

INTRODUCTION

This Executive Summary of the *Crime in Illinois 2007*, Annual Uniform Crime Report, is intended to provide readers with a high-level overview of the nature of crime in Illinois. This summary highlights statewide statistics and topics of interest. Detailed statistics and analyses are contained in the complete *Crime in Illinois 2007*, Annual Uniform Crime Report, which is available via the internet through the Illinois State Police website at <http://www.isp.state.il.us>.

During 2007, 972 agencies submitted data directly to the Illinois Uniform Crime Reporting (I-UCR) Program. The remaining agencies reported their crime statistics through an intermediary agency (sheriff's office, police department, etc.). A complete listing of agencies that participated and their respective extent of participation is available in the complete publication.

Local law enforcement agencies are mandated by Chapter 20 of the Illinois Compiled Statutes, 2630/8, to report crime index offenses, crime index offense arrests, and drug arrests. The 2006 figures may not reflect the figures published in *Crime in Illinois 2006* due to submission of late and/or adjusted data.

DEDICATION

This report is dedicated to all law enforcement officers, and in particular, to those police officers who lost their lives during the past year in the performance of duty while upholding the laws of the state of Illinois.



Chief Deputy Tommy Martin
Trooper Brian McMillen

*“Courage knows no bounds greater than that,
that a man or woman shall give his or her life in the
service of his or her community.”
(Source Unknown)*

SUMMARY OF CRIME IN ILLINOIS

Crime index offenses are considered to be the most serious and the most likely to be reported, and are used nationally as the standard base for comparisons. The I-UCR crime index offenses and crime index offense arrests include the categories of murder, criminal sexual assault, robbery, aggravated assault/battery (including attempted murder and ritual mutilation), burglary, theft (including burglary from a motor vehicle), motor vehicle theft, and arson.

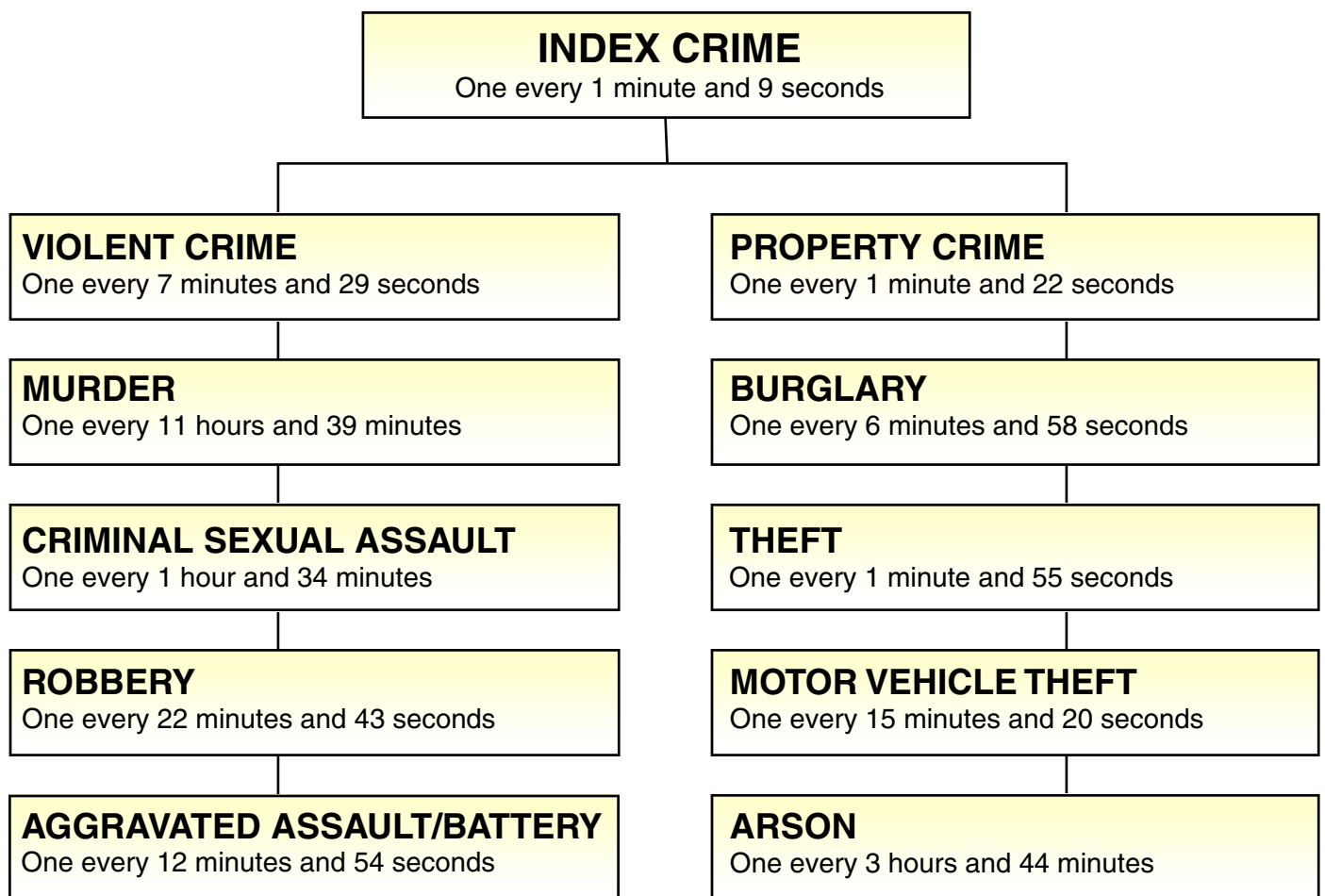
Summary

There were 456,085 crime index offenses reported to the I-UCR Program this year, an average of 1,250 each day, or one every 69 seconds. This is a 3.1 percent decrease from the 470,730 crime index offenses reported last year. The crime index offense rate for 2007 is 3,554.3 per 100,000 inhabitants. This is a 3.6 percent decrease from the 2006 crime rate of 3,688.1 per 100,000 inhabitants.

Arrests

There were 95,773 arrests in 2007 for crime index offenses. This is a 0.4 percent increase from the 95,404 arrests reported in 2006. The crime index offense arrest rate for 2007 is 746.4 per 100,000 inhabitants.

FREQUENCY OF CRIME



STATE OF ILLINOIS

Law Enforcement Employee Information:	Female	Male	Total	2007 Population	12,831,970
Sworn Full-Time	5,555	29,511	35,066	2006 Population	12,763,371
Civilian Full-Time	7,111	6,953	14,064		
Sworn Part-Time	261	3,774	4,035		
Auxiliary Officers	198	1,642	1,840		
Total*	13,125	41,880	55,005		

*Police Departments, Sheriffs' Offices, Colleges & Universities, Secretary of State only.

CRIME INDEX OFFENSES / CRIME RATE COMPARISON 2007/2006

Year	Total Crime Index Offenses	Murder	Criminal Sexual Assault	Robbery	Aggravated Assault / Battery	Burglary	Theft	Motor Vehicle Theft	Arson
2007	456,085	752	5,596	23,135	40,719	75,524	273,740	34,281	2,338
2006	470,730	786	5,729	23,941	41,222	77,749	281,018	37,900	2,385
% Chg	-3.1%	-4.3%	-2.3%	-3.4%	-1.2%	-2.9%	-2.6%	-9.5%	-2.0%
2007	(3,554.3)	(5.9)	(43.6)	(180.3)	(317.3)	(588.6)	(2,133.3)	(267.2)	(18.2)
2006	(3,688.1)	(6.2)	(44.9)	(187.6)	(323.0)	(609.2)	(2,201.8)	(296.9)	(18.7)
% Chg	(-3.6%)	(-4.8%)	(-2.9%)	(-3.9%)	(-1.8%)	(-3.4%)	(-3.1%)	(-10.0%)	(-2.7%)

Rate per 100,000 is in parentheses.

CRIME INDEX OFFENSES / ARREST RATE COMPARISON 2007/2006

Year	Total Crime Index Offenses	Murder	Criminal Sexual Assault	Robbery	Aggravated Assault / Battery	Burglary	Theft	Motor Vehicle Theft	Arson
2007	95,773	609	1,519	4,876	17,458	10,403	53,895	6,566	447
2006	95,404	533	1,497	5,185	18,342	10,777	51,195	7,423	452
% Chg	0.4%	14.3%	1.5%	-6.0%	-4.8%	-3.5%	5.3%	-11.5%	-1.1%
2007	(746.4)	(4.7)	(11.8)	(38.0)	(136.1)	(81.1)	(420.0)	(51.2)	(3.5)
2006	(747.5)	(4.2)	(11.7)	(40.6)	(143.7)	(84.4)	(401.1)	(58.2)	(3.5)
% Chg	(-0.1%)	(11.9%)	(0.9%)	(-6.4%)	(-5.3%)	(-3.9%)	(4.7%)	(-12.0%)	(0.0%)

Rate per 100,000 is in parentheses.

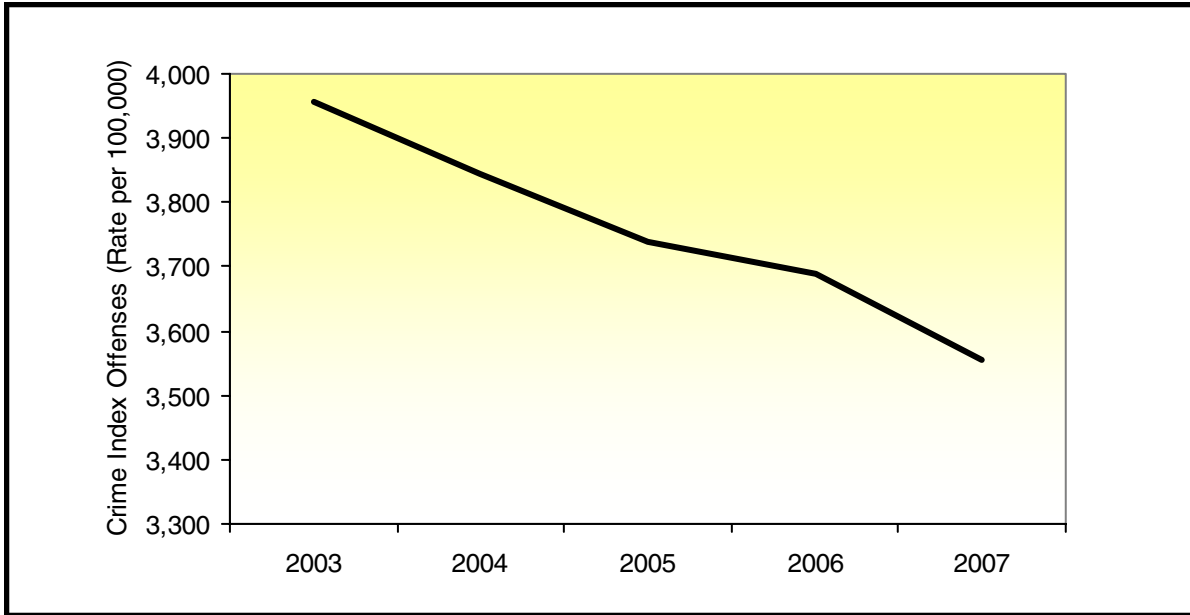
DRUG CRIME ARREST COMPARISON 2007/2006

Year	Rate per 100,000	Total Drug Arrests	Cannabis Control Act	Controlled Substances Act	Hypodermic Syringes & Needles Act	Drug Paraphernalia Act
2007	857.6	110,041	54,753	39,054	595	15,639
2006	883.0	112,701	51,846	44,728	643	15,484
% Chg	-2.9%	-2.4%	5.6%	-12.7%	-7.5%	1.0%

SUPPLEMENTAL DATA - TOTAL OFFENSES REPORTED 2007/2006

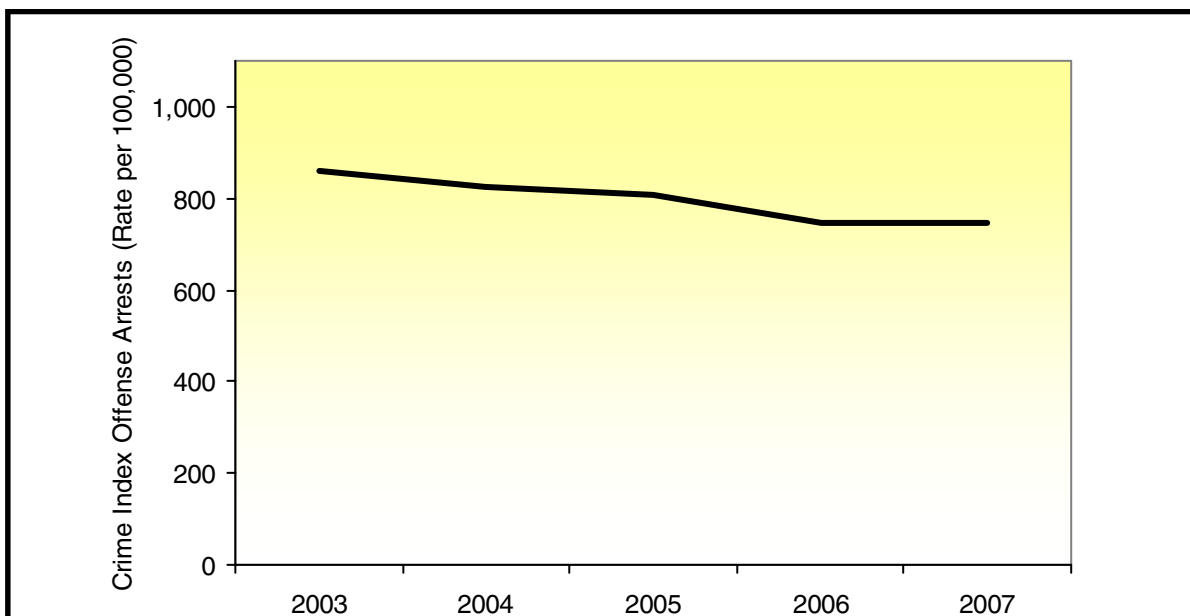
Year	Crimes Against School Personnel	Crimes Against Children	Domestic Crimes	Hate Crimes
2007	3,473	34,092	115,006	191
2006	3,158	36,444	115,455	191
% Chg	10.0%	-6.5%	-0.4%	0.0%

CRIME INDEX OFFENSES

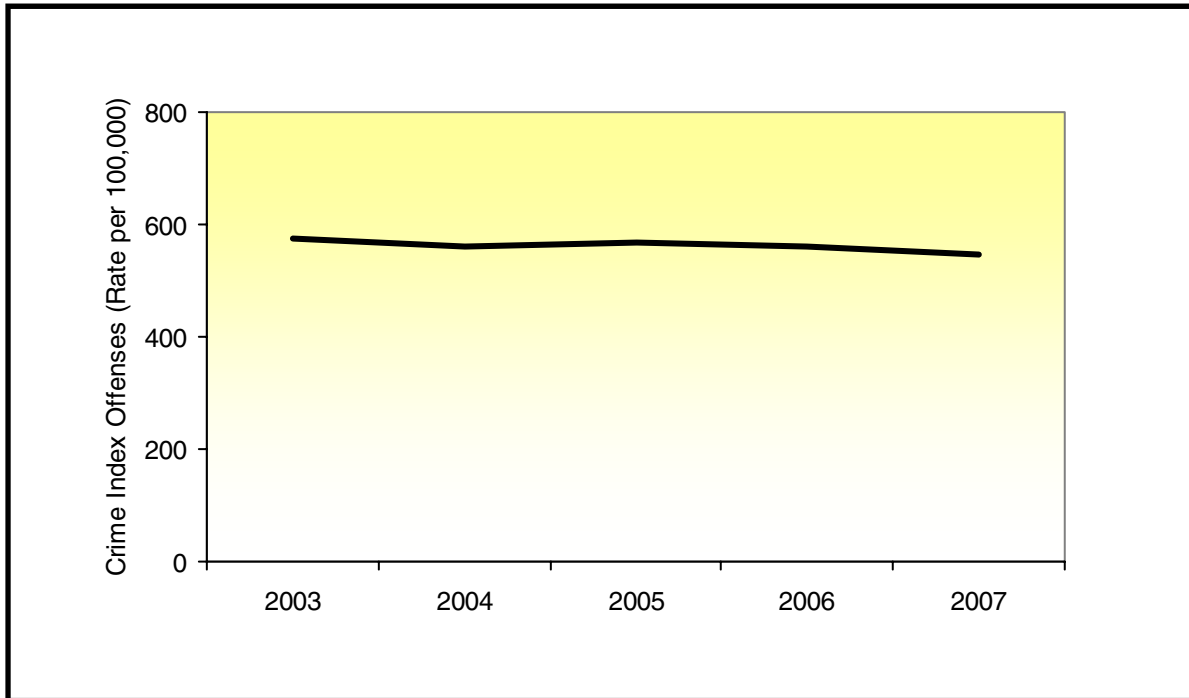


Crime Index Offenses	2003	2004	2005	2006	2007
Number of Offenses	497,822	486,469	475,497	470,730	456,085
Percent Change from Previous Year	-4.1%	-2.3%	-2.3%	-1.0%	-3.1%
Rate per 100,000 Inhabitants	3,955.2	3,844.5	3,740.1	3,688.1	3,554.3
Number of Arrests	108,124	104,607	102,905	95,404	95,773
Percent Change from Previous Year	-5.2%	-3.3%	-1.6%	-7.3%	0.4%
Rate per 100,000 Inhabitants	859.1	826.7	809.4	747.5	746.4

CRIME INDEX OFFENSE ARRESTS



VIOLENT CRIME



Definition: The crime index offenses of murder, criminal sexual assault, robbery, and aggravated assault/battery (including attempted murder and ritual mutilation) comprise the general category of violent crime.

Violent Crime Index Offenses	2003	2004	2005	2006	2007
Number of Offenses	72,172	71,142	72,348	71,678	70,202
Percent Change from Previous Year	-7.8%	-1.4%	1.7%	-0.9%	-2.1%
Rate per 100,000 Inhabitants	573.4	562.2	569.1	561.6	547.1

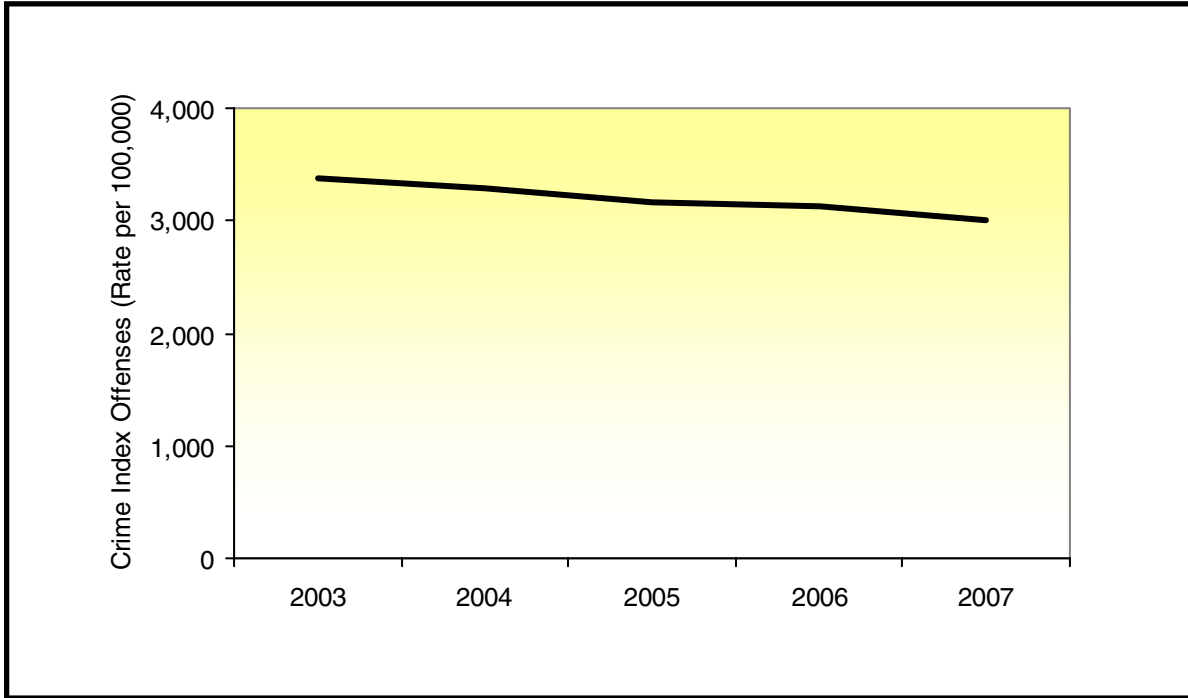
Summary

There were 70,202 violent crime offenses reported to the I-UCR Program this year, an average of 192 each day, or one every 7 minutes and 29 seconds. This is a 2.1 percent decrease from the 71,678 violent crime index offenses reported last year. The violent crime offense rate for 2007 is 547.1 per 100,000 inhabitants.

Arrests

There were 24,462 arrests this year for violent crime offenses. This is a 4.3 percent decrease from the 25,557 arrests reported last year. The violent crime offense arrest rate for 2007 is 190.6 per 100,000 inhabitants.

PROPERTY CRIME



Definition: The crime index offenses of burglary, theft (including burglary from a motor vehicle), motor vehicle theft, and arson comprise the general category of property crime.

Property Crime Offenses	2003	2004	2005	2006	2007
Number of Offenses	425,650	415,327	403,149	399,052	385,883
Percent Change from Previous Year	-3.5%	-2.4%	-2.9%	-1.0%	-3.3%
Rate per 100,000 Inhabitants	3,381.8	3,282.3	3,171.0	3,126.5	3,007.2

Summary

There were 385,883 property crime offenses reported to the I-UCR Program this year, an average of 1,057 each day, or one every 1 minute and 22 seconds. This is a 3.3 percent decrease from the 399,052 crime index offenses reported last year. The property crime index offense rate for 2007 is 3,126.5 per 100,000 inhabitants.

Arrests

There were 71,311 arrests this year for property crime offenses. This is a 2.1 percent increase from the 69,847 arrests reported last year. The property crime index offense rate for 2007 is 555.7 per 100,000 inhabitants.

CORE BASED STATISTICAL AREAS

The United States Office of Management and Budget developed new standards to define Core Based Statistical Areas (CBSAs) beginning in 2003. These standards replace and supersede the 1990 standards for defining Metropolitan Statistical Areas.

CBSAs are defined as a statistical geographic entity consisting of the county or counties associated with at least one core (urbanized area or urban cluster) of at least 10,000 population, plus adjacent counties having a high degree of social and economic integration with the core as measured through commuting ties with the counties containing the core. The new standards designate and define two categories of CBSAs: Metropolitan Statistical Areas and Micropolitan Statistical Areas. These are the terms used for the basic set of county-based areas as defined under this classification.

Metropolitan Statistical Areas have at least one urbanized area of 50,000 or more population, plus adjacent territory that has a high degree of social and economic integration with the core as measured by commuting ties. Micropolitan Statistical Areas—a new set of statistical areas—have at least one urban cluster of at least 10,000 but less than 50,000 population, plus adjacent territory that has a high degree of social and economic integration with the core as measured by commuting ties. If the specified criteria are met, a Metropolitan Statistical Area containing a single core with a population of 2.5 million or more may be subdivided to form smaller groupings of counties referred to as Metropolitan Divisions. Counties that do not fall within CBSAs represent Outside Core Based Statistical Areas.

There are 11 Metropolitan Statistical Areas that include 36 counties in Illinois. Inhabitants of the Metropolitan Statistical Areas account for 86.8 percent of the state’s population and 90.7 percent of the Illinois crime index offenses. There are 23 Micropolitan Statistical Areas that include 29 counties in Illinois. Inhabitants of the Micropolitan Statistical Areas account for 8.3 percent of the state’s population and 6.8 percent of the Illinois crime index offenses. There are 37 counties that comprise the Outside Core Based Statistical Areas in Illinois. Inhabitants of the Outside Core Based Statistical Areas account for 4.9 percent of the state’s population and 2.5 percent of the Illinois crime index offenses. In some cases the percentages may not sum to 100 due to rounding.

Six of Illinois’ Metropolitan and Micropolitan Statistical Areas are part of areas in Indiana, Iowa, Kentucky, Missouri, and Wisconsin. Areas outside of Illinois are not represented in the statistics presented here.

CBSA Category	2007 Population	Total Crime Index Offenses*	Crime Rate per 100,000	Violent Crime Index Offenses*	Property Crime Index Offenses*
Metropolitan Statistical Areas	11,139,130	413,581	2,712.9	64,566	349,015
Micropolitan Statistical Areas	1,068,489	31,238	2,923.6	3,634	27,604
Total Metro– and Micropolitan Statistical Areas	12,207,619	444,819	3,643.8	68,200	376,619
Outside Core Based Statistical Areas	624,351	11,244	1,800.9	2,002	9,242
Total Metro–, Micropolitan, and Outside Core Based Statistical Areas	12,831,970	456,085	3,554.3	70,202	385,883

* Secretary of State totals are not reflected in the county totals but are reflected in the state total.

SUPPLEMENTAL DATA

In April 1996, the I-UCR Program began collecting additional crime information. This data includes statistics pertaining to offenses mandated by state statutes and offenses concerning children. Due to limitations of agencies' reporting systems, all agencies are not included in the totals presented in the following tables. In some cases, the percentages may not sum to 100 due to rounding.

DOMESTIC CRIMES

Reporting domestic violence is mandated by Chapter 20 of the Illinois Compiled Statutes, 2630/5.1. Domestic-related crimes are defined as crimes committed by family or household members, including spouses, former spouses, parents, children, stepchildren and other persons related by blood or marriage, persons who share or formerly shared a common dwelling, and persons who have or allegedly have a child in common. In the case of a high-risk adult with disabilities, family or household member includes any person who has the responsibility for that individual as a result of a family relationship, or who has assumed responsibility for all or a portion of the care voluntarily, by express or implied contract, or court order.

Summary

There were 115,006 domestic violence offenses reported to the I-UCR Program this year, an average of 315 each day, or one every 4 minutes and 34 seconds. This is a 0.4 percent decrease from the 115,455 domestic violence offenses reported last year. The domestic violence offense rate is 896.2 per 100,000 inhabitants.

DOMESTIC CRIMES BY RELATIONSHIP*

Family Related			
Relationship Type	Group Percent	Relationship	Percent of Total
Marital	41.5%	Spouse	36.5%
		Ex-Spouse	4.3%
		Common-law Spouse	0.8%
Parental/Child	38.0%	Parent	16.4%
		Step-Parent	1.5%
		Grandparent	1.0%
		Child	15.0%
		Step-child	2.2%
		Grandchild	0.5%
		Child of Boyfriend/Girlfriend	1.4%
Other Family	21.5%	Sibling	11.9%
		Step-sibling	0.4%
		In-law	1.5%
		Other Family	6.6%

Other Domestic Related	
Relationship Type	Percent of Total
Boyfriend/Girlfriend	74.6%
Same Sex Relationship	1.5%
Child in Common with Offender	6.8%
Friend**	2.9%
Otherwise Known**	14.3%

**Includes roommates/personal care attendants, etc.

*Due to software issues, the 'Relationship Type' is unavailable from Chicago Police Department data and is not represented in the 'Domestic Crimes by Relationship' tables.

SUPPLEMENTAL DATA

CRIMES AGAINST CHILDREN

Although reporting in this category is not mandated by state statutes, information is collected to research and evaluate the problems of offenses against children. Contributing agencies are not required to report this data to the I-UCR Program. All crimes reported by participating agencies that involve victims aged 16 years and younger are included in this category.

Summary

There were 34,092 crimes against children reported to the I-UCR Program this year, an average of 93 each day, or one every 15 minutes and 25 seconds. This is a 6.5 percent decrease from the 36,444 crimes reported last year. The crimes against children offense rate is 265.7 per 100,000 inhabitants.

OFFENSE TYPE BY VICTIM AGE GROUP

Crime by Category	Ages Under 1 to 5 Years	Percent of Category Total	Ages 6 to 12 Years	Percent of Category Total	Ages 13 to 16 Years	Percent of Category Total	Total Under 1 to 16 Years	Percent of Total (34,092)
Murder*	14	26.9%	3	5.8%	35	67.3%	52	0.2%
Criminal Sexual Assault*	203	17.7%	365	31.8%	578	50.4%	1,146	3.4%
Robbery*	24	1.4%	301	17.8%	1364	80.8%	1,689	5.0%
Aggravated Assault/Battery*	158	4.4%	777	21.8%	2,637	73.8%	3,572	10.5%
Simple Assault/Battery	727	4.1%	4,792	26.9%	12,304	69.0%	17,823	52.3%
Burglary*	23	12.3%	55	29.4%	109	58.3%	187	0.5%
Theft*	52	2.5%	514	24.4%	1,540	73.1%	2,106	6.2%
Theft/Burglary From a Motor Vehicle*	1	2.1%	4	8.3%	43	89.6%	48	0.1%
Motor Vehicle Theft*	1	7.7%	0	0.0%	12	92.3%	13	0.0%
Arson*	12	26.7%	11	24.4%	22	48.9%	45	0.1%
Sex Offenses	257	16.2%	526	33.1%	805	50.7%	1,588	4.7%
Offenses Involving Children	1,516	48.0%	1,106	35.0%	535	16.9%	3,157	9.3%
Disorderly Conduct	38	4.3%	164	18.5%	683	77.2%	885	2.6%
Intimidation	2	3.8%	14	26.9%	36	69.2%	52	0.2%
Kidnapping	182	30.8%	229	38.8%	179	30.3%	590	1.7%
Deadly Weapon	2	11.8%	6	35.3%	9	52.9%	17	0.0%
Violation of Orders of Protection	60	25.4%	76	32.2%	100	42.4%	236	0.7%
All Other Offenses	96	10.8%	190	21.4%	600	67.7%	886	2.6%
TOTAL	3,368	9.9%	9,133	26.8%	21,591	63.3%	34,092	100.0%

* Indicates Crime Index Offenses.

SUPPLEMENTAL DATA

CRIMES AGAINST SCHOOL PERSONNEL

The reporting of attacks on school personnel is mandated by Chapter 105 of the Illinois Compiled Statutes, 5/10-21.7. The I-UCR Program collects information relating to all crimes committed against teachers, administrative personnel, or educational support personnel. This includes teacher’s aides, bus drivers, or janitors, etc., who are employed by the school.

Summary

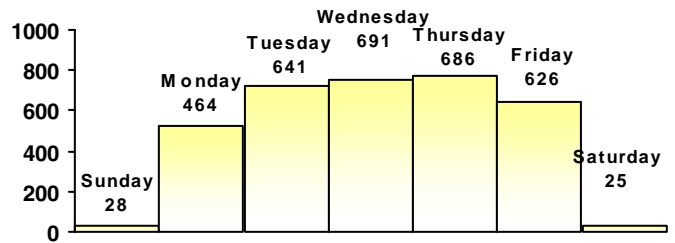
There were 3,473 crimes against school personnel reported to the I-UCR Program this year, an average of 10 each day, or one every 2 hours and 31 minutes. This is a 10.0 percent increase from the 3,158 crimes reported last year. The crimes against school personnel offense rate is 27.1 per 100,000 inhabitants.

OFFENSE TYPE BY CRIME CATEGORY

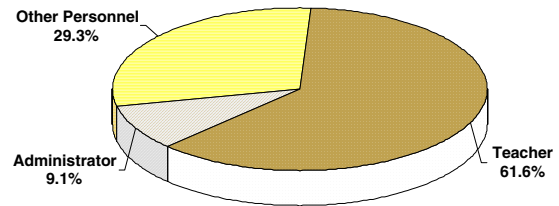
Crime by Category	Number of Offenses	Percent of Total
Murder*	0	0.0%
Criminal Sexual Assault*	1	0.0%
Robbery*	2	0.1%
Aggravated Assault/Battery*	2,746	79.1%
Simple Assault/Battery	537	15.5%
Burglary*	2	0.1%
Theft*	53	1.5%
Theft/Burglary From a Motor Vehicle*	1	0.0%
Motor Vehicle Theft*	1	0.0%
Arson*	0	0.0%
Sex Offenses	1	0.0%
Offenses Involving Children	1	0.0%
Disorderly Conduct	61	1.8%
Intimidation	1	0.0%
Kidnapping	1	0.0%
Deadly Weapon	11	0.3%
All Other Offenses	54	1.6%
TOTAL	3,473	100.0%

* Indicates Crime Index Offenses.

OFFENSES BY DAY OF OCCURRENCE



OFFENSES BY VICTIM TYPE**



**Due to software issues, the 'Victim Type' is unavailable from Chicago Police Department data and is not represented in the 'Offenses by Victim Type' chart.

SUPPLEMENTAL DATA

HATE CRIME

The reporting of hate crime information is mandated by Chapter 20 of the Illinois Compiled Statutes, 2605/390(a). A hate crime is committed when, by reason of the actual or perceived race, color, creed, religion, ancestry, gender, sexual orientation, physical or mental stability, or national origin of another individual or group of individuals, a person commits assault, battery, aggravated assault, misdemeanor theft, criminal trespass to residence, misdemeanor criminal damage to property, criminal trespass to vehicle, criminal trespass to real property, mob action, or disorderly conduct.

Summary

This year, 191 hate crime offenses were reported through the I-UCR Program. These offenses were committed by 258 offenders. This is a 0.0 percent change from the 191 offenses reported last year. Multiple victims and/or offenses may be reported within a single incident. The following table depicts hate crime data by victim, offender race, and bias motivation.

OFFENSE TYPE BY CATEGORY

Hate Crime Offenses by Type of Victim		
Type of Victim	Number of Offenses	Percent of Total
Business	6	3.1%
Government	2	1.0%
Individual	168	88.0%
Other	8	42.0%
Religious Organization	7	3.7%
TOTAL	191	100.0%
Hate Crime Offenses by Offender Race		
Offender's Race	Number of Offenders	Percent of Total
Asian/Pacific Islander	1	0.4%
Black	125	48.4%
Multi-Racial Group	0	0.0%
Unknown	1	0.4%
White	131	50.8%
TOTAL	258	100.0%

Bias Motivation Totals		
Bias Motivation	Number of Offenses	Percent of Total
Anti-Arab	1	0.5%
Anti-Asian/Pacific Islander	1	0.5%
Anti-Atheism/Agnosticism/Etc	1	0.5%
Anti-Bisexual	1	0.5%
Anti-Black	86	45.0%
Anti-Elderly	1	0.5%
Anti-Female	2	1.1%
Anti-Female Homosexual (Lesbian)	4	2.1%
Anti-Hispanic	13	6.8%
Anti-Homosexual (Gay & Lesbian)	6	3.1%
Anti-Islamic (Muslim)	1	0.5%
Anti-Jewish	16	8.4%
Anti-Male Homosexual (Gay)	17	8.9%
Anti-Mental	2	1.1%
Anti-Multi-Racial Group	2	1.1%
Anti-Multi-Religious Group	2	1.1%
Anti-Other Ethnicity/Nat'l Origin	9	4.7%
Anti-White	26	13.6%
TOTAL	191	100.0%

LAW ENFORCEMENT EMPLOYEE INFORMATION

Sworn & Civilian Full-Time Law Enforcement Employees by Agency Type					
Sworn & Civilian Full-Time Employees	Police Departments	Sheriff's Offices	Miscellaneous Agencies	Total	Percent of Total
0 - 10	484	11	45	540	52.0%
11- 50	235	58	40	333	32.3%
51- 200	106	23	13	142	13.7%
201 +	11	10	3	24	2.3%
TOTAL	836	102	101	1,039	100.0%

Statewide

The statewide total number of law enforcement personnel in Illinois for 2007 is 60,819. The 42,605 part- and full-time sworn officers in 2007 account for 70.1 percent of the entire state of Illinois' law enforcement work force. The 2007 rate of sworn employees to population for Illinois is 3.3 per 1,000 inhabitants. The 16,318 civilian employees comprise 26.8 percent of the entire state of Illinois law enforcement community's work force, with an employment rate of 1.3 per 1,000 inhabitants. The 1,896 auxiliary officers (officers not on active duty but subject to call in an emergency situation) in 2007 account for 3.1 percent of the entire state of Illinois law enforcement community's work force, with an employment rate of 0.1 per 1,000 inhabitants.

Police Departments

Police departments employed 38,139 law enforcement employees statewide in 2007 accounting for 62.7 percent of the state law enforcement employee total. Part- and full-time sworn officers account for 83.6 percent (31,867) of the police department work force. The 2007 employment rate for sworn employees of police departments is 3.0 per 1,000 inhabitants. The 5,082 civilian employees comprise 13.3 percent of the police department work force, with an employment rate of 0.5 per 1,000 inhabitants. The 1,190 auxiliary officers in 2007 comprise 3.1 percent of the police department work force, with an employment rate of 0.1 per 1,000 inhabitants.

Sheriffs' Offices

Sheriffs' offices employed 15,184 law enforcement employees statewide in 2007 accounting for 25.0 percent of the state law enforcement employee total. The 6,026 part- and full-time sworn officers in 2007 account for 39.7 percent of the sheriffs' offices work force. The 2007 employment rate for sworn employees of sheriffs' offices is 2.9 per 1,000 inhabitants. The 8,513 civilian employees comprise 56.1 percent of the sheriffs' offices work force, with an employment rate of 4.1 per 1,000 inhabitants. The 645 auxiliary officers in 2007 comprise 4.2 percent of the sheriffs' offices work force, with an employment rate of 0.3 per 1,000 inhabitants.

Miscellaneous Agencies

Miscellaneous agencies employed 7,496 law enforcement employees statewide in 2007 accounting for 12.3 percent of the state law enforcement employee total. Miscellaneous agencies reported 4,712 part- and full-time sworn officers in 2007 accounting for 62.9 percent of the miscellaneous agencies work force. These agencies include airports, colleges and universities, fire departments and arson investigations, forest preserves, hospitals, other agencies, park districts, and railroads. Since miscellaneous agencies do not have a population, employment rates cannot be calculated. The 2,723 civilian employees comprise 36.3 percent of the miscellaneous agencies work force. The 61 auxiliary officers in 2007 comprise 0.8 percent of the miscellaneous agencies work force.

Inquiries on the data presented in this
publication may be directed to:

Illinois State Police
Illinois Uniform Crime Reporting Program
801 South 7th Street, Suite 300-M
P.O. Box 19461
Springfield, IL 62794
217/557-6482

Internet Address:
<http://www.isp.state.il.us>
<http://www.illinois.gov>